

# MINI PIVOT MODULE



DUET



BLANK

HLO

PRISM

MICRO-PRISM

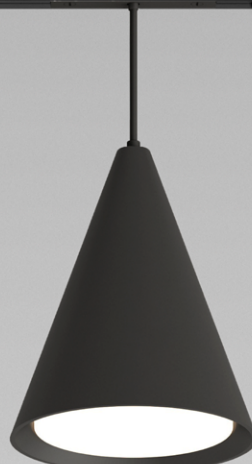
DOT

BRIDGE

SOLO



TAB ACOUSTIX



CARET



GLOBE



DOT  
CYLINDER



PETITE 1"  
CYLINDER

# MINI PIVOT MODULE



Project: \_\_\_\_\_

Type: \_\_\_\_\_

## MINI PIVOT HLO



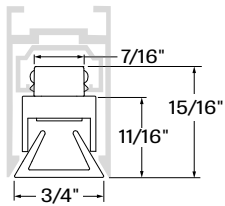
### DESCRIPTION

The Mini Pivot HLO module represents a premium everyday solution with its understated elegance and distribution of clean, uniform light and smooth beam edges.

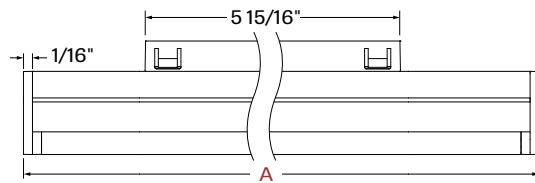
### Order Guide

LUMINAIRE ID	LENGTH	LIGHT SOURCE	CRI	LUMEN PACKAGE	COLOR TEMP.	MODULE FINISH
<b>MIPIVHLO</b>						
<b>MIPIVHLO</b> - Mini Pivot HLO	<b>1FT</b> - 1' <b>2FT</b> - 2' <b>3FT</b> - 3' <b>4FT</b> - 4'	<b>SW</b> - Static white <b>FS</b> - Full spectrum static white	<b>80CRI</b> <sup>1</sup> - 80+ CRI <b>90CRI</b> <sup>1</sup> - 90+ CRI <b>95CRI</b> - 95+ CRI  <sup>1</sup> Not available with full spectrum.	<b>300LMF</b> - 300 lm/ft <b>450LMF</b> - 450 lm/ft <b>600LMF</b> - 600 lm/ft	<b>27K</b> - 2700K <b>30K</b> - 3000K <b>35K</b> - 3500K <b>40K</b> - 4000K	<b>FTMB</b> - Matte black <b>FTMW</b> - Matte white <b>CF#</b> - Custom finish, specify RAL#

### Dimensions



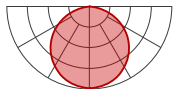
MIPIVHLO - Mini Pivot HLO



MIPIVHLO - Mini Pivot HLO - Side view

NOMINAL LENGTH	A		WEIGHT	
	TOTAL LENGTH			
1'	11 13/16"		0.2 lb	0.1 kg
2'	23 13/16"		0.4 lb	0.2 kg
3'	35 7/16"		0.7 lb	0.3 kg
4'	47 7/16"		0.9 lb	0.4 kg

### Photometrics



#### Module wattage (W)

NOMINAL LENGTH	LUMEN PACKAGE at 3500K/80+ CRI		
	300	450	600
1'	4.0	5.9	8.0
2'	7.8	11.1	14.7
3'	11.0	16.6	22.7
4'	14.4	22.2	29.5

#### Multiplier - CCT/CRI

CCT	Lumens		
	80+ CRI	90+ CRI	95+ CRI
2700K	0.96	0.81	0.80
3000K	0.99	0.83	0.83
3500K	1.00	0.85	0.84
4000K	1.03	0.87	0.86

# MINI PIVOT MODULE



Project: \_\_\_\_\_

Type: \_\_\_\_\_

## MINI PIVOT MICRO-PRISM



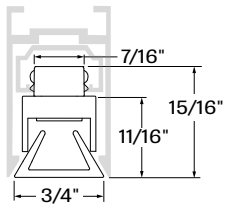
### DESCRIPTION

The Mini Pivot Micro-Prism module, equipped with our precision Micro-Prism Optic™ (MPO™) is a compact marvel engineered to minimize glare and illuminate gently and powerfully. The module's high-quality light output illuminates with a subtle glow to create pleasant lit environments.

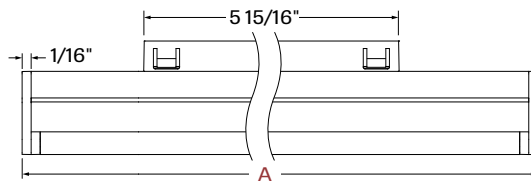
### Order Guide

LUMINAIRE ID	LENGTH	LIGHT SOURCE	CRI	LUMEN PACKAGE	COLOR TEMP.	MODULE FINISH
<b>MIPIVMPO</b>						
<b>MIPIVMPO</b> - Mini Pivot Micro-Prism	<b>1FT</b> - 1' <b>2FT</b> - 2' <b>3FT</b> - 3' <b>4FT</b> - 4'	<b>SW</b> - Static white <b>FS</b> - Full spectrum static white	<b>80CRI</b> <sup>1</sup> - 80+ CRI <b>90CRI</b> <sup>1</sup> - 90+ CRI <b>95CRI</b> - 95+ CRI  <sup>1</sup> Not available with full spectrum.	<b>200LMF</b> - 200 lm/ft <b>300LMF</b> - 300 lm/ft <b>400LMF</b> - 400 lm/ft	<b>27K</b> - 2700K <b>30K</b> - 3000K <b>35K</b> - 3500K <b>40K</b> - 4000K	<b>FTMB</b> - Matte black <b>FTMW</b> - Matte white <b>CF#</b> - Custom finish, specify RAL#

### Dimensions



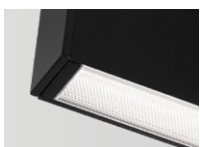
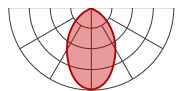
MIPIVMPO - Mini Pivot Micro-Prism



MIPIVMPO - Mini Pivot Micro-Prism - Side view

NOMINAL LENGTH	A		WEIGHT	
	TOTAL LENGTH			
1'	11 13/16"		0.2 lb	0.1 kg
2'	23 13/16"		0.4 lb	0.2 kg
3'	35 7/16"		0.7 lb	0.3 kg
4'	47 7/16"		0.9 lb	0.4 kg

### Photometrics



#### Module wattage (W)

NOMINAL LENGTH	LUMEN PACKAGE at 3500K/80+ CRI		
	200	300	400
1'	4.0	5.9	8.0
2'	7.8	11.1	14.7
3'	11.0	16.6	22.7
4'	14.4	22.2	29.5

#### Multiplier - CCT/CRI

CCT	Lumens		
	80+ CRI	90+ CRI	95+ CRI
2700K	0.96	0.81	0.80
3000K	0.99	0.83	0.83
3500K	1.00	0.85	0.84
4000K	1.03	0.87	0.86

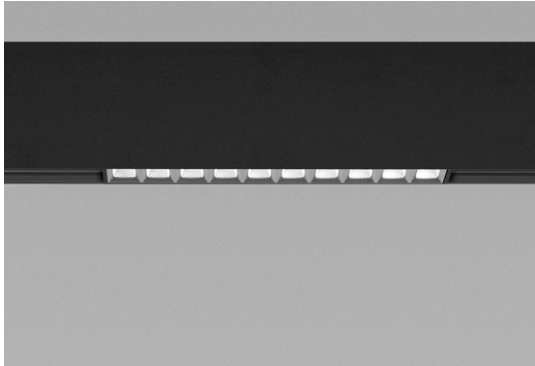
# MINI PIVOT MODULE



Project: \_\_\_\_\_

Type: \_\_\_\_\_

## MINI PIVOT PRISM



### DESCRIPTION

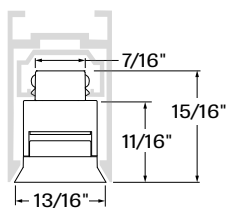
The Mini Pivot Prism module, equipped with our Diamond Prism Optic (DPO), emits a luxurious quality of light, soft and low-glare, wrapping around subjects with subtle graduated shadows.

### Order Guide

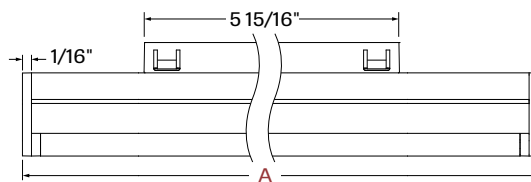
LUMINAIRE ID	LENGTH	OPTIC	LIGHT SOURCE	CRI
<b>MIPIVPR</b>				
<b>MIPIVPR</b> - Mini Pivot Prism	<b>7IN</b> - 7" (1X10) <b>14IN</b> - 14" (1X20) <b>28IN</b> - 28" (1X40)	<b>BDPO</b> - Matte Black Diamond Prism Optic <b>GDPO</b> - Graphite Diamond Prism Optic	<b>SW</b> - Static white <b>FS</b> - Full spectrum static white	<b>80CRI</b> <sup>1</sup> - 80+ CRI <b>90CRI</b> <sup>1</sup> - 90+ CRI <b>95CRI</b> <sup>2</sup> - 95+ CRI  <sup>1</sup> Not available with full spectrum. <sup>2</sup> Available with full spectrum only.

LUMEN PACKAGE										COLOR TEMP.	MODULE FINISH
	7" (1X10)			14" (1X20)			28" (1X40)			<b>27K</b> - 2700K <b>30K</b> - 3000K <b>35K</b> - 3500K <b>40K</b> - 4000K	<b>FTMB</b> - Matte black <b>FTMW</b> - Matte white <b>CF#</b> - Custom finish, specify RAL#
	Low	Medium	High	Low	Medium	High	Low	Medium	High		
BDPO	<b>375LM</b>	<b>550LM</b>	<b>X</b>	<b>750LM</b>	<b>1100LM</b>	<b>X</b>	<b>1500LM</b>	<b>2200LM</b>	<b>X</b>		
GDPO	<b>375LM</b>	<b>550LM</b>	<b>750LM</b>	<b>750LM</b>	<b>1100LM</b>	<b>1500LM</b>	<b>1500LM</b>	<b>2200LM</b>	<b>3000LM</b>		

### Dimensions



MIPIVPR - Mini Pivot Prism



MIPIVPR - Mini Pivot Prism - Side view

NOMINAL LENGTH	A		WEIGHT	
	TOTAL			
7"	6 13/16"		0.13 lb	0.06 kg
14"	13 7/16"		0.26 lb	0.12 kg
28"	26 3/4"		0.53 lb	0.24 kg

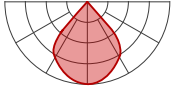
# MINI PIVOT MODULE



Project: \_\_\_\_\_

Type: \_\_\_\_\_

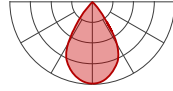
## Photometrics



**BDPO -**  
Matte Black Diamond Prism Optic

### Module wattage (W) - BDPO

NOMINAL LENGTH	LUMEN PACKAGE at 3500K/90+ CRI	WATTAGE
7" (1X10)	375	6.9 W
	550	10.1 W
14" (1X20)	750	13.9 w
	1100	20.2 W
28" (1X40)	1500	27.7 W
	2200	40.4 W



**GDPO -**  
Graphite Diamond Prism Optic

### Module wattage (W) - GDPO

NOMINAL LENGTH	LUMEN PACKAGE at 3500K/90+ CRI	WATTAGE
7" (1X10)	375	5.0 W
	550	6.9 W
	750	10.1 W
14" (1X20)	750	9.5 W
	1100	13.9 W
	1500	20.2 W
28" (1X40)	1500	18.9 W
	2200	27.7 W
	3000	40.4 W

## Multiplier - CCT/CRI

CCT	Lumens	
	80+ CRI	90+ CRI
2700K	1.08	0.94
3000K	1.12	0.98
3500K	1.12	1.00
4000K	1.13	1.02

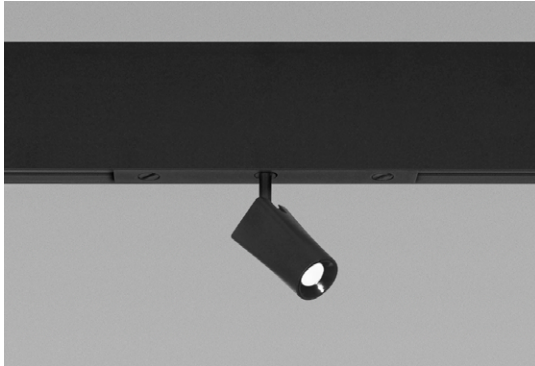
# MINI PIVOT MODULE



Project: \_\_\_\_\_

Type: \_\_\_\_\_

## MINI PIVOT SOLO



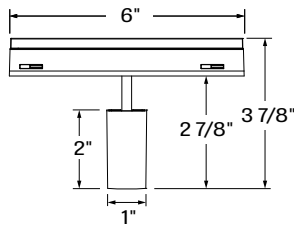
### DESCRIPTION

The Mini Pivot Solo module highlights separate elements in a space, and in the process, creates a dynamic, harmonious, and aesthetically pleasing atmosphere.

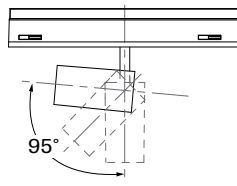
### Order Guide

LUMINAIRE ID <sup>1</sup>	LIGHT SOURCE	BEAM	CRI	LUMEN PACKAGE	COLOR TEMP.	MODULE FINISH
<b>MIPIVSOLO</b>	<b>SW</b>			<b>350LM</b>		
<b>MIPIVSOLO</b> - Mini Pivot Solo <small><sup>1</sup>Up to 95° tilt, 355° rotation.</small>	<b>SW</b> - Static white	<b>25DEG</b> - 25° Spot <b>35DEG</b> - 35° Narrow flood <b>45DEG</b> - 45° Flood	<b>80CRI</b> - 80+ CRI <b>90CRI</b> - 90+ CRI	<b>350LM</b> - 350 lm, 5.2 W	<b>27K</b> - 2700K <b>30K</b> - 3000K <b>35K</b> - 3500K <b>40K</b> - 4000K	<b>FTMB</b> - Matte black <b>FTMW</b> - Matte white <b>CF#</b> - Custom finish, specify RAL#

### Dimensions



MIPIVSOLO - Mini Pivot Solo

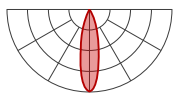


Up to 95° tilt

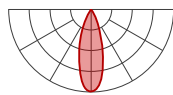
### WEIGHT

0.33 lb	0.15 kg
---------	---------

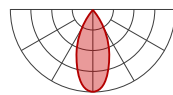
### Photometrics



**25DEG** - 25° Spot



**35DEG** - 35° Narrow Flood



**45DEG** - 45° Flood

### Module wattage (W)

LUMEN PACKAGE at 3500K/80+ CRI	WATTAGE
350	5.2 W

### Multiplier - CCT/CRI

CCT	Lumens	
	80+ CRI	90+ CRI
2700K	0.93	0.81
3000K	1.00	0.86
3500K	1.00	0.86
4000K	1.08	0.86

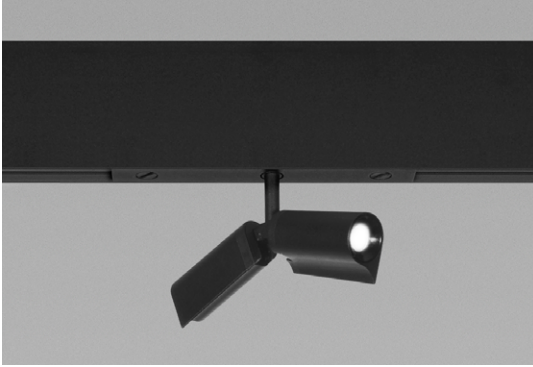
# MINI PIVOT MODULE



Project: \_\_\_\_\_

Type: \_\_\_\_\_

## MINI PIVOT DUET



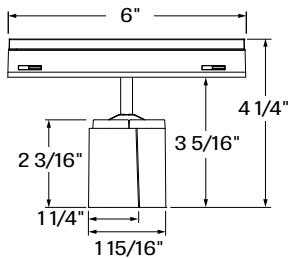
### DESCRIPTION

Mini Pivot Duet, a point source module with twin track heads, allows for lighting in two directions simultaneously with each track head able to tilt up to 70°.

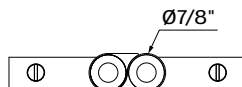
### Order Guide

LUMINAIRE ID <sup>1</sup>	LIGHT SOURCE	BEAM	CRI	LUMEN PACKAGE	COLOR TEMP.	MODULE FINISH
<b>MIPIVDUET</b>	<b>SW</b>			<b>700LM</b>		
<b>MIPIVDUET</b> - Mini Pivot Duet <small><sup>1</sup> Up to 70° tilt per head, 355° rotation.</small>	<b>SW</b> - Static white	<b>25DEG</b> - 25° Spot <b>35DEG</b> - 35° Narrow flood <b>45DEG</b> - 45° Flood	<b>80CRI</b> - 80+ CRI <b>90CRI</b> - 90+ CRI	<b>700LM</b> - 700 lm, 10.5 W (350 lm per head)	<b>27K</b> - 2700K <b>30K</b> - 3000K <b>35K</b> - 3500K <b>40K</b> - 4000K	<b>FTMB</b> - Matte black <b>FTMW</b> - Matte white <b>CF#</b> - Custom finish, specify RAL#

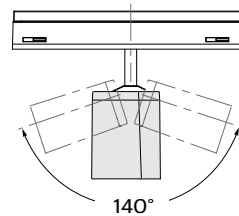
### Dimensions



MIPIVDUET - Mini Pivot Duet



MIPIVDUET - Mini Pivot Duet - Bottom view

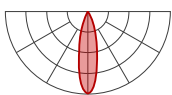


Up to 70° tilt per head

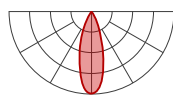
### WEIGHT

0.55 lb | 0.25 kg

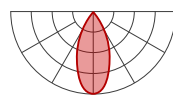
### Photometrics



25DEG - 25° Spot



35DEG - 35° Narrow flood



45DEG - 45° Flood

### Module wattage (W)

LUMEN PACKAGE at 3500K/80+ CRI	WATTAGE
700	10.5 W

### Multiplier - CCT/CRI

CCT	Lumens	
	80+ CRI	90+ CRI
2700K	0.93	0.81
3000K	1.00	0.86
3500K	1.00	0.86
4000K	1.08	0.86



# MINI PIVOT MODULE



Project: \_\_\_\_\_

Type: \_\_\_\_\_

## MINI PIVOT DOT



### DESCRIPTION

Mini Pivot Dot modules are individual mounting systems that can be used on their own as single lighting fixtures or as part of a broader design within the Mini Pivot track system.

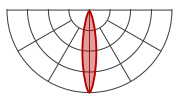
### Order Guide

LUMINAIRE ID <sup>1</sup>	HEIGHT	LIGHT SOURCE	BEAM	CRI	LUMEN PACKAGE <sup>3</sup>			COLOR TEMP.
<b>MPIV1DT</b> - Mini Pivot 1.5" Dot <b>MPIV2DT</b> - Mini Pivot 2" Dot <small><sup>1</sup>Up to 90° tilt, 355° rotation.</small>	2.65IN - 2.65"	<b>SW</b> - Static white <b>FS</b> - Full spectrum static white	<b>20DEG</b> - 20° Spot <b>35DEG</b> - 35° Narrow flood <b>50DEG</b> - 50° Wide flood	<b>80CRI</b> <sup>2</sup> - 80+ CRI <b>90CRI</b> <sup>2</sup> - 90+ CRI <b>95CRI</b> - 95+ CRI <small><sup>2</sup>Not available with full spectrum.</small>		1.5"	2"	<b>27K</b> - 2700K <b>30K</b> - 3000K <b>35K</b> - 3500K <b>40K</b> - 4000K
	2.65" height				<b>700LM</b> - 700 lm, 6 W	<b>750LM</b> - 750 lm, 8.2 W		
	4" height				<b>850LM</b> - 850 lm, 10 W	<b>900LM</b> - 900 lm, 12 W		

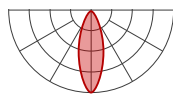
<sup>3</sup>Lumen outputs are reduced with full spectrum, consult factory.

BAFFLE	BAFFLE FINISH	MODULE FINISH
<b>SDB</b> - Standard baffle <b>DCB</b> <sup>4</sup> - Decorative baffle <small><sup>4</sup>Recommended when a different finish is desired for the baffle.</small>	<b>FTMB</b> - Matte black <b>FTMW</b> - Matte white <b>CF#</b> - Custom finish, specify RAL #	<b>FTMB</b> - Matte black <b>FTMW</b> - Matte white <b>CF#</b> - Custom finish, specify RAL#

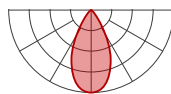
### Photometrics



**20DEG** - 20° Spot



**35DEG** - 35° Narrow flood



**50DEG** - 50° Wide flood

### Module wattage (W)

SIZE	HEIGHT	LUMEN PACKAGE at 3500K/80+ CRI	WATTAGE
1.5"	2.65"	700	6 W
	4"	850	10 W
2"	2.65"	750	8.2 W
	4"	900	12 W

### Multiplier - CCT/CRI

CCT	Lumens		
	80+ CRI	90+ CRI	95+ CRI
2700K	0.94	0.77	0.72
3000K	0.96	0.82	0.75
3500K	1.00	0.85	0.81
4000K	1.02	0.87	0.79



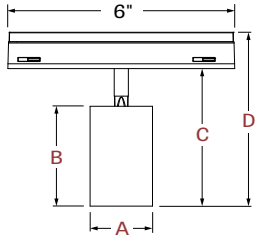
# MINI PIVOT MODULE



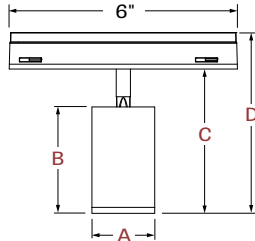
Project: \_\_\_\_\_

Type: \_\_\_\_\_

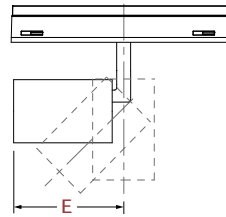
## Dimensions



**SDB** - Standard baffle



**DCB** - Decorative baffle



Maximum length - Up to 90° tilt

SIZE	A		B		C		D		E		WEIGHT	
	ACTUAL SIZE	CYLINDER HEIGHT	MODULE HEIGHT	TOTAL HEIGHT	MAX. LENGTH (90° tilt)							
		SDB	DCB	SDB	DCB	SDB	DCB	SDB	DCB			
1.5"	Ø 1 11/16"	2 5/8"	2 13/16"	3 5/8"	3 13/16"	4 5/8"	4 3/4"	2 15/16"	3 1/8"	0.55 lb	0.25 kg	
		4"	4 3/16"	5"	5 3/16"	5 15/16"	6 1/8"	4 5/16"	4 7/16"	0.77 lb	0.35 kg	
2"	Ø 2 3/16"	2 5/8"	2 13/16"	3 5/8"	3 13/16"	4 5/8"	4 3/4"	2 15/16"	3 1/8"	0.66 lb	0.3 kg	
		4"	4 3/16"	5"	5 3/16"	5 15/16"	6 1/8"	4 5/16"	4 7/16"	1.1 lb	0.5 kg	

# MINI PIVOT MODULE



Project: \_\_\_\_\_

Type: \_\_\_\_\_

## MINI PIVOT DOT CYLINDER



### DESCRIPTION

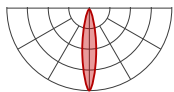
Mini Pivot Dot Cylinders are individual mounting systems that can be used on their own as single lighting fixtures or as part of a broader design within the Mini Pivot track system.

### Order Guide

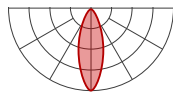
LUMINAIRE ID	HEIGHT	LIGHT SOURCE	BEAM	CRI	LUMEN PACKAGE <sup>2</sup>		COLOR TEMP.
<b>MIPIV1DTCY</b> - Mini Pivot 1.5" Dot Cylinder <b>MIPIV2DTCY</b> - Mini Pivot 2" Dot Cylinder	<b>6IN</b> - 6" <b>9IN</b> - 9" <b>12IN</b> - 12" <b>18IN</b> - 18"	<b>SW</b> - Static white <b>FS</b> - Full spectrum static white	<b>20DEG</b> - 20° Spot <b>35DEG</b> - 35° Narrow flood <b>50DEG</b> - 50° Wide flood	<b>80CRI</b> <sup>1</sup> - 80+ CRI <b>90CRI</b> <sup>1</sup> - 90+ CRI <b>95CRI</b> - 95+ CRI <sup>1</sup> Not available with full spectrum.	1.5"	2"	<b>27K</b> - 2700K <b>30K</b> - 3000K <b>35K</b> - 3500K <b>40K</b> - 4000K
	<b>700LM</b> - 700 lm, 6 W <b>850LM</b> - 850 lm, 10 W				<b>750LM</b> - 750 lm, 8.2 W <b>900LM</b> - 900 lm, 12 W	<sup>2</sup> Lumen outputs are reduced with full spectrum, consult factory.	

BAFFLE	BAFFLE FINISH	MODULE FINISH	SUSPENSION	SUSPENSION LENGTH
<b>SDB</b> - Standard baffle <b>DCB</b> <sup>3</sup> - Decorative baffle <sup>3</sup> Recommended when a different finish is desired for the baffle.	<b>FTMB</b> - Matte black <b>FTMW</b> - Matte white <b>CF#</b> - Custom finish, specify RAL#	<b>FTMB</b> - TMatte black <b>FTMW</b> - Matte white <b>CF#</b> - Custom finish, specify RAL#	<b>PCB</b> - Black power cord <b>PCW</b> - White power cord	<b>12IN</b> - 12" <b>24IN</b> - 24" <b>36IN</b> - 36" <b>48IN</b> - 48"

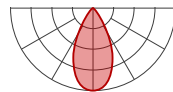
### Photometrics



**20DEG** - 20° Spot



**35DEG** - 35° Narrow flood



**50DEG** - 50° Wide flood

### Module wattage (W)

SIZE	LUMEN PACKAGE at 3500K/80+ CRI	WATTAGE
1.5"	700	6 W
	850	10 W
2"	750	8.2 W
	900	12 W

### Multiplier - CCT/CRI

CCT	Lumens		
	80+ CRI	90+ CRI	95+ CRI
2700K	0.94	0.77	0.72
3000K	0.96	0.82	0.75
3500K	1.00	0.85	0.81
4000K	1.02	0.87	0.79

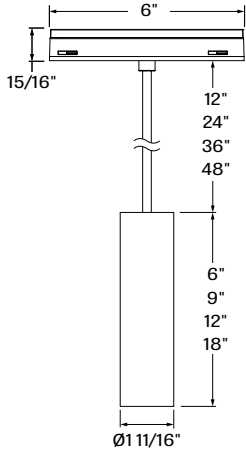
# MINI PIVOT MODULE



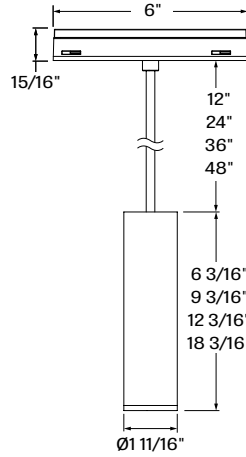
Project: \_\_\_\_\_

Type: \_\_\_\_\_

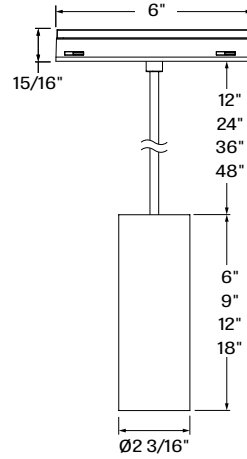
## Dimensions



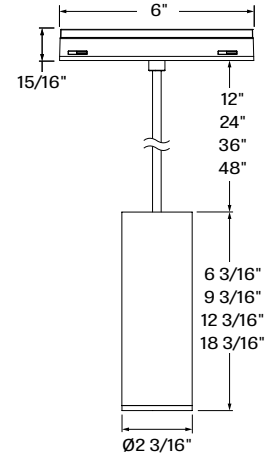
**MIPIV1DTCY** - Mini Pivot 1.5" Dot Cylinder  
- Standard baffle



**MIPIV1DTCY** - Mini Pivot 1.5" Dot Cylinder  
- Decorative baffle



**MIPIV2DTCY** - Mini Pivot 2" Dot Cylinder  
- Standard baffle



**MIPIV2DTCY** - Mini Pivot 2" Dot Cylinder  
- Decorative baffle

SIZE	HEIGHT	WEIGHT	
1.5"	6"	0.88 lb	0.4 kg
	9"	0.99 lb	0.45 kg
	12"	1.1 lb	0.5 kg
	18"	1.43 lb	0.65 kg
2"	6"	1.21 lb	0.55 kg
	9"	1.43 lb	0.65 kg
	12"	1.54 lb	0.7 kg
	18"	1.87 lb	0.85 kg

# MINI PIVOT MODULE



Project: \_\_\_\_\_

Type: \_\_\_\_\_

## MINI PIVOT PETITE 1" CYLINDER



### DESCRIPTION

The Mini Pivot Petite 1" Cylinder is true-to-size, encased in minimalist housing, and elegantly detailed with a slim strain relief and the option of a bevel or glow ring baffle style. Optically, it benefits from our CircaFlex™ beam-splitting technology that allows light to follow an intended optical path with maximal precision, minimal spread, and even distribution.

### Order Guide

LUMINAIRE ID	CYLINDER HEIGHT	LIGHT SOURCE	BEAM	CRI	LUMEN PACKAGE <sup>1</sup>	COLOR TEMP.
<b>MIPIVPETICY</b>		<b>SW</b>				
<b>MIPIVPETICY</b> - Mini Pivot Petite 1" Cylinder	<b>6IN</b> - 6" <b>9IN</b> - 9" <b>12IN</b> - 12" <b>18IN</b> - 18"	<b>SW</b> - Static white	<b>35DEG</b> - 35° Narrow flood <b>45DEG</b> - 45° Flood	<b>80CRI</b> - 80+ CRI <b>90CRI</b> - 90+ CRI <b>95CRI</b> - 95+ CRI	<b>580LM</b> - 580 lm, 8 W <b>670LM</b> - 670 lm, 10 W <b>780LM</b> - 780 lm, 12 W	<b>27K</b> - 2700K <b>30K</b> - 3000K <b>35K</b> - 3500K <b>40K</b> - 4000K

<sup>1</sup> Refer to the performance tables below for delivered lumens.

BAFFLE STYLE	BAFFLE FINISH Specify NA for Glow ring	MODULE FINISH	SUSPENSION	SUSPENSION LENGTH	LENS
<b>BVL</b> - Bevel <b>GLR</b> - Glow ring	<b>FTMB</b> - Matte black <b>FTMW</b> - Matte white <b>FSPC</b> - Satin silver <b>FSSPC</b> - Matte silver <b>FCHP</b> - Champagne <b>CF#</b> - Custom finish, specify RAL # <b>NA</b> - Not applicable	<b>FTMB</b> - Matte black <b>FTMW</b> - Matte white <b>CF#</b> - Custom finish, specify RAL#	<b>PCB</b> - Black power cord <b>PCW</b> - White power cord	<b>12IN</b> - 12" <b>24IN</b> - 24" <b>36IN</b> - 36" <b>48IN</b> - 48"	<b>SDL</b> - Soft diffused lens, Solite <b>NOL</b> - No lens

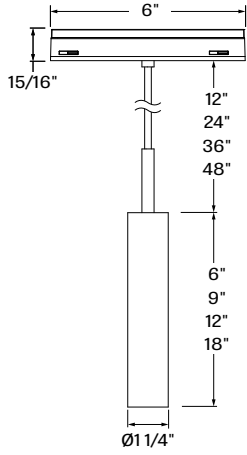
# MINI PIVOT MODULE



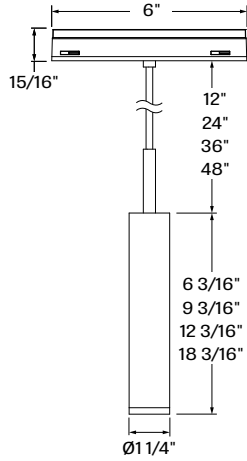
Project: \_\_\_\_\_

Type: \_\_\_\_\_

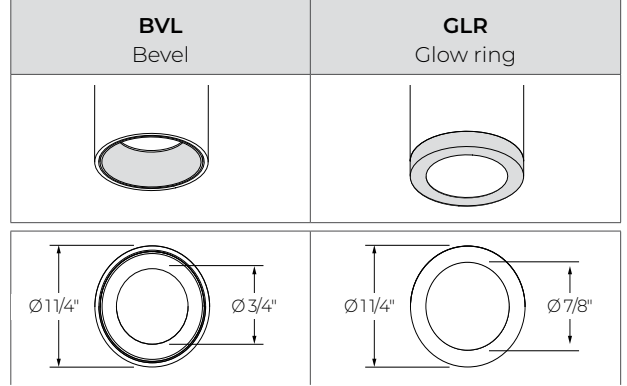
## Dimensions



**MIPIVPECTICY** - Mini Pivot Petite 1" Cylinder  
- Bevel



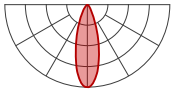
**MIPIVPECTICY** - Mini Pivot Petite 1" Cylinder  
- Glow ring



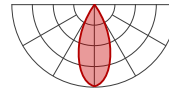
	HEIGHT		WEIGHT	
6"	0.84 lb	0.38 kg		
9"	1.06 lb	0.48 kg		
12"	1.28 lb	0.58 kg		
18"	1.65 lb	0.75 kg		

## Photometrics

Values calculated based on 3500K, 90+ CRI, and with no lens. The light distribution will vary depending on baffle finish and trim style.



**35DEG** - 35° Narrow flood



**45DEG** - 45° Flood

BAFFLE STYLE / FINISH	Im		W		Im		W	
	8 W	10 W	12 W	12 W				
White	549	633	737					
Black, Champagne	447	517	602					
Satin silver, Matte silver	523	604	703					
Glow Ring	555	641	746					

BAFFLE STYLE / FINISH	Im		W		Im		W	
	8 W	10 W	12 W	12 W				
White	582	671	782					
Black, Champagne	470	412	480					
Satin silver, Matte silver	557	643	749					
Glow Ring	560	646	752					

## Multipliers

Please follow the multiplier tables to ensure correct lumen value. CCT, CRI, and lensing will change the lumen value.

CCT		CRI		LENS	
2700K	0.94	80+ CRI	1	SDL-Soft diffused lens, Solite	0.91
3000K	0.98	90+ CRI	1	No lens	1
3500K	1	95+ CRI	0.77		
4000K	1.05				

# MINI PIVOT MODULE



Project: \_\_\_\_\_

Type: \_\_\_\_\_

## MINI PIVOT GLOBE



### DESCRIPTION

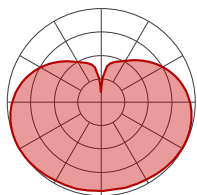
The Mini Pivot Globe offers universal appeal and uniform illumination. The spherical fixture is lit fully with our Isotropic Radiant Optic™ (IRO™) distributing light smoothly and evenly in all directions, thereby avoiding undesirable hotspots.

### Order Guide

LUMINAIRE ID	SIZE	OPTIC	LIGHT SOURCE	CRI	LUMEN PACKAGE						
<b>MPIVGLB</b>		<b>IRO</b>	<b>SW</b>								
<b>MPIVGLB</b> - Mini Pivot Globe	<b>4IN</b> - Ø 4" <b>6IN</b> - Ø 6" <b>8IN</b> - Ø 8"	<b>IRO</b> - Isotropic Radiant Optic	<b>SW</b> - Static white	<b>80CRI</b> - 80+ CRI <b>90CRI</b> - 90+ CRI <b>95CRI</b> - 95+ CRI	<table border="1"> <tr> <td>Ø 4"</td> <td><b>525LM</b> - 525 lm, 10 W</td> </tr> <tr> <td>Ø 6"</td> <td><b>800LM</b> - 800 lm, 12 W</td> </tr> <tr> <td>Ø 8"</td> <td><b>1200LM</b> - 1200 lm, 14 W</td> </tr> </table>	Ø 4"	<b>525LM</b> - 525 lm, 10 W	Ø 6"	<b>800LM</b> - 800 lm, 12 W	Ø 8"	<b>1200LM</b> - 1200 lm, 14 W
Ø 4"	<b>525LM</b> - 525 lm, 10 W										
Ø 6"	<b>800LM</b> - 800 lm, 12 W										
Ø 8"	<b>1200LM</b> - 1200 lm, 14 W										

COLOR TEMP.	MODULE FINISH	SUSPENSION	SUSPENSION LENGTH
<b>27K</b> - 2700K <b>30K</b> - 3000K <b>35K</b> - 3500K <b>40K</b> - 4000K	<b>FTMB</b> - Matte black <b>FTMW</b> - Matte white <b>CF#</b> - Custom finish, specify RAL#	<b>PCB</b> - Black power cord <b>PCW</b> - White power cord	<b>12IN</b> - 12" <b>24IN</b> - 24" <b>36IN</b> - 36" <b>48IN</b> - 48"

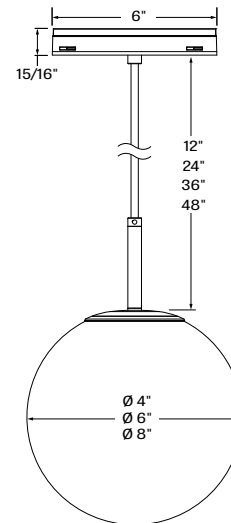
### Photometrics



Values calculated based on 3500K.

SIZE	LM	W
Ø 4"	525	10
Ø 6"	800	12
Ø 8"	1200	14

### Dimensions



SIZE	WEIGHT	
4"	1.1 lb	0.5 kg
6"	1.8 lb	0.8 kg
8"	2.6 lb	1.2 kg

### Multipliers

Use these tables to get results for different color temperatures and CRI.

CCT	
2700K	0.94
3000K	0.98
3500K	1
4000K	1.05

CRI	WATTS
80+ CRI / 90+ CRI	1
95+ CRI	0.82

# MINI PIVOT MODULE



Project: \_\_\_\_\_

Type: \_\_\_\_\_

## MINI PIVOT CARET



### DESCRIPTION

Timeless in appearance and flexible in function, the conical Mini Pivot Caret embodies the simple decorative beauty of geometric design and the sophisticated power of innovative technology. The Caret is equipped with our Unity Pointed (UP) technology, which delivers lens brightness uniformity.

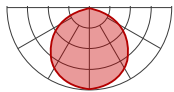
### Order Guide

LUMINAIRE ID	SIZE	OPTIC	LIGHT SOURCE	CRI	LUMEN PACKAGE <sup>2</sup>
<b>MIPIVCAR</b>	<b>8IN</b>	<b>HLO</b>			
<b>MIPIVCAR</b> - Mini Pivot Caret	<b>8IN</b> - Ø 8"	<b>HLO</b> - High-Efficiency Lambertian Optic	<b>SW</b> - Static white <b>FS</b> - Full spectrum static white	<b>80CRI</b> <sup>1</sup> - 80+ CRI <b>90CRI</b> <sup>1</sup> - 90+ CRI <b>95CRI</b> - 95+ CRI	<b>500LM</b> - 500 lm, 5.6 W <b>700LM</b> - 700 lm, 7.7 W
				<sup>1</sup> Not available with full spectrum.	<sup>2</sup> Lumen outputs are reduced with full spectrum, consult factory.

COLOR TEMP.	INNER TRIM FINISH	MODULE FINISH	SUSPENSION	SUSPENSION LENGTH
<b>27K</b> - 2700K <b>30K</b> - 3000K <b>35K</b> - 3500K <b>40K</b> - 4000K	<b>FTMB</b> - Matte black <b>FTMW</b> - Matte white <b>CF#</b> - Custom finish, specify RAL#	<b>FTMB</b> - Matte black <b>FTMW</b> - Matte white <b>CF#</b> - Custom finish, specify RAL#	<b>PCB</b> - Black power cord <b>PCW</b> - White power cord	<b>12IN</b> - 12" <b>24IN</b> - 24" <b>36IN</b> - 36" <b>48IN</b> - 48"

### Photometrics



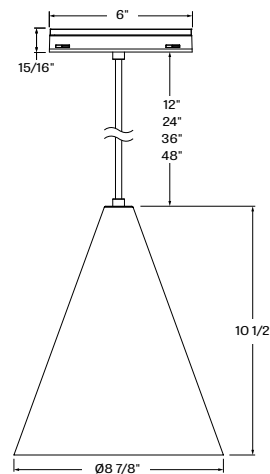
#### Module wattage (W)

SIZE	LUMEN PACKAGE at 3500K/90+ CRI	WATTAGE
8"	500	5.6 W
	700	7.7 W

#### Multiplier - CCT/CRI

CCT	Lumens		
	80+ CRI	90+ CRI	95+ CRI
2700K	1.13	0.94	0.88
3000K	1.17	0.96	0.90
3500K	1.19	1.00	0.92
4000K	1.19	1.00	0.94

### Dimensions



MIPIVCAR - Mini Pivot Caret Ø 8"

SIZE		WEIGHT	
8"		2.2 lb	1 kg

# MINI PIVOT MODULE



Project: \_\_\_\_\_

Type: \_\_\_\_\_

## MINI PIVOT TAB ACOUSTIX



### DESCRIPTION

Mini Pivot Tab Acoustix is an acoustic pendant that delivers quality light, effective acoustic control, a touch of softness with its rounded corners, and a punch of color thanks to its sound-absorbing felt panel (made from PET resin) available in a variety of standard and premium colors.

### Order Guide

LUMINAIRE ID	DISTRIBUTION	OPTIC	LIGHT SOURCE	CRI	LUMEN PACKAGE
<b>MIPIVTABACO</b>	<b>D</b>	<b>HLO</b>	<b>SW</b>	<b>90CRI</b>	<b>250LMF</b>
MIPIVTABACO - Mini Pivot Tab Acoustix	D - Direct	HLO - High-Efficiency Lambertian Optic	SW - Static white	90CRI - 90+ CRI	250LMF - 250 lm/ft

COLOR TEMP.	LUMINAIRE LENGTH	LUMINAIRE HEIGHT	MODULE FINISH	SUSPENSION	SUSPENSION LENGTH
		<b>8IN</b>			
27K - 2700K 30K - 3000K 35K - 3500K 40K - 4000K	2FT - 2' 3FT - 3' 4FT - 4'	8IN - 8"	FTMB - Matte black FTMW - Matte white CF# - Custom finish, specify RAL#	PCB - Black power cord PCW - White power cord	12IN - 12" 24IN - 24" 36IN - 36" 48IN - 48"

### FELT COLOR

STANDARD COLORS	PREMIUM COLORS <sup>1,2</sup>
FWN    LVN FON    LEN ION    CYN TBN    PMN MDN    FGN	PKN    CDN    IVN    BHN OGN    SYN    SLN    MON LNN    BLN    CNN LMN    NVN    GHN

<sup>1</sup>Please consult factory for more color options.  
<sup>2</sup>Lead time may vary.



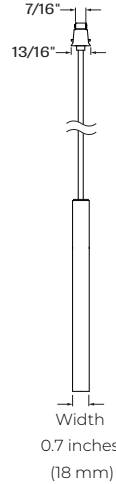
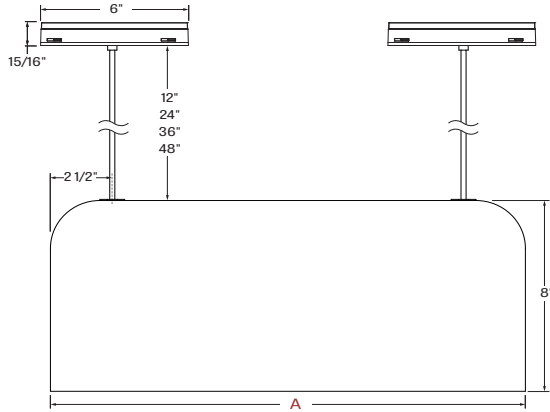
# MINI PIVOT MODULE



Project: \_\_\_\_\_

Type: \_\_\_\_\_

## Dimensions



**MIPIVTABACO** - Mini Pivot Tab Acoustix

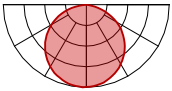
**MIPIVTABACO** - Mini Pivot Tab Acoustix - side view



**MIPIVTABACO** - Mini Pivot Tab Acoustix - bottom view

NOMINAL LENGTH	A FIXTURE LENGTH	B DIRECT LENS LENGTH	WEIGHT	
2'	22 7/8"	21 5/8"	1.65 lb	0.75 kg
3'	34 7/8"	33 5/8"	2.43 lb	1.1 kg
4'	46 7/8"	45 5/8"	3.3 lb	1.5 kg

## Photometrics



### Module wattage (W)

NOMINAL LENGTH	LUMEN PACKAGE at 3500K/90+ CRI	WATTAGE
2'	500	12.6 W
3'	750	24.6 W
4'	1000	33.2 W

### Multiplier - CCT/CRI

CCT	Lumens 90+ CRI
2700K	1.02
3000K	1.01
3500K	1.00
4000K	0.98

# MINI PIVOT MODULE



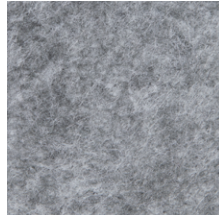
Project: \_\_\_\_\_

Type: \_\_\_\_\_

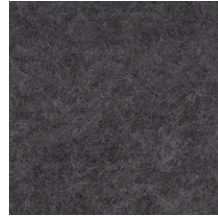
## Standard Color Options



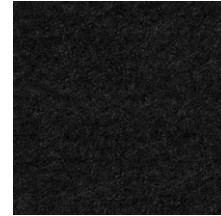
**FWN** - FROST WHITE



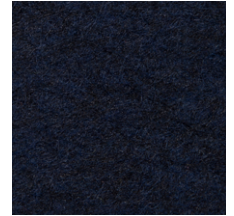
**FON** - FOG



**ION** - IRON



**TBN** - TRUE BLACK



**MDN** - MIDNIGHT BLUE



**LVN** - LAVENDER



**LEN** - LATTE



**CYN** - CHERRY



**PMN** - PLUM



**FGN** - FOREST GREEN

## Premium Color Options\*



**PKN** - PAPRIKA



**OGN** - ORANGE



**LNN** - LEMON



**LMN** - LIME



**CDN** - CLOUDY



**SYN** - SKY



**BLN** - BLUEBERRY



**NVN** - NAVY



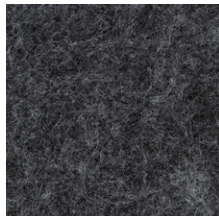
**IVN** - IVORY



**SLN** - STEEL



**CNN** - CARBON



**GHN** - GRAPHITE



**BHN** - BLUSH



**MON** - MOCHA

\*Please consult factory for more color options.

\*Lead time may vary.

# MINI PIVOT MODULE



Project: \_\_\_\_\_

Type: \_\_\_\_\_

## MINI PIVOT BRIDGE



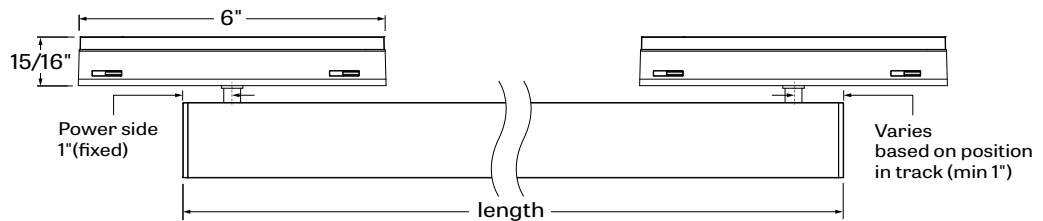
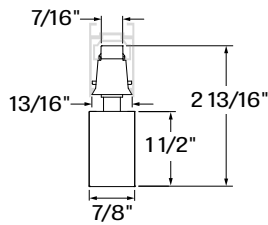
### DESCRIPTION

The Mini Pivot Bridge is a connector module mounted across two tracks and designed to tap into Mini Pivot's electrical system. In this way, the Bridge serves as a powered track on which additional luminaire modules can be placed.

### Order Guide

LUMINAIRE ID	LENGTH	MODULE FINISH
<b>MIPIVBGE</b>		
<b>MIPIVBGE</b> - Mini Pivot Bridge	<b>#FT#IN</b> <sup>1</sup> - Specify nominal length (#) in 1" and/or 1" increments  <sup>1</sup> Minimum length is 2'. Maximum length is 8'.	<b>FTMB</b> - Matte black <b>FTMW</b> - Matte white <b>CF#</b> - Custom finish, specify RAL#

### Dimensions



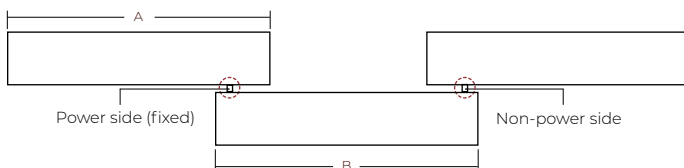
MIPIVBGE - Mini Pivot Bridge

MIPIVBGE - Mini Pivot Bridge - Side view

### Bridge wattage

The Mini Pivot Bridge module shares power with an adjoining track section (via the power side adapter). In order to determine the rated wattage per foot of a track section + bridge, you must first calculate the rated wattage of the track section powering the bridge (8 W/ft x length) then divide that wattage by the total length of that section + the length of the bridge module attached to it.

### Track with Bridge



### Example:

Track length [A] = 8 ft

Bridge length [B] = 4 ft

Track wattage (W) = 8 W/ft x 8 ft = 64 W

Track + bridge wattage per foot (W/ft) = 64 W / [8 ft + 4 ft] = 5.3 W/ft

LENGTH	WEIGHT	
2'	1.43 lb	0.65 kg
3'	2.05 lb	0.93 kg
4'	2.65 lb	1.20 kg
5'	3.26 lb	1.48 kg
6'	3.86 lb	1.75 kg
7'	4.48 lb	2.03 kg
8'	5.07 lb	2.30 kg

# MINI PIVOT MODULE



Project: \_\_\_\_\_

Type: \_\_\_\_\_

## MINI PIVOT BLANK



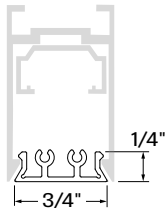
### DESCRIPTION

The Mini Pivot Blank modules are unlit modules that click securely into the bottom of the Mini Pivot Track system. Their purpose is to mask unlit track modules with their smooth, unassuming appearance.

### Order Guide

LUMINAIRE ID	LENGTH	MODULE FINISH
<b>MIPIVBLA</b>		
<b>MIPIVBLA</b> - Mini Pivot Blank	<b>#FT#IN</b> <sup>1,2</sup> - Specify nominal length (#) in 1' and/or 1" increments  <sup>1</sup> Minimum length is 1". Maximum length is 8' <sup>2</sup> Blank module can be cut on-site to desired length.	<b>FTMB</b> - Matte black <b>FTMW</b> - Matte white <b>CF#</b> - Custom finish, specify RAL#

### Dimensions



LENGTH	WEIGHT (per ft.)	
1'	1 lb	0.45 kg

**MIPIVBLA** - Mini Pivot Blank

## Technical Specifications

### OPTICS

#### High-Efficiency Lambertian Optic (HLO)

Shielding of diffusing 0.075" thick acrylic provides up to 88% transmission and good obscuration. Matte white reflectors distribute LED output across the shielding. Luminaire brightness is controlled by the ratio of luminous flux to shielding area.

#### Micro-Prism Optic™ (MPO™)

The Micro-Prism Optic™ uses a unique lens that mixes refraction and reflection. Its micro prism and efficient design minimize light loss while maintaining visual comfort and low glare.

#### Diamond Prism Optic (DPO)

The Diamond Prism Optic™ (DPO™) is our patent-pending 3-tiered optic meticulously crafted to refract and reflect beams with great precision, effectively keeping glare to a minimum while delivering light of exceptional quality and visual comfort.

#### Mini Pivot Solo and Duet Optic

The Mini Pivot Solo and Duet modules use an LED light source coupled with a TIR refractor to provide three beam angles of 25°, 35°, and 45°, while producing up to 350 lumens.

#### CircaFlex™ Optic

The CircaFlex™ Optic, at just 0.8" for Mini Pivot Petite Cylinder and 1.2" for Mini Pivot Dot/Dot Cylinder, uses advanced beam-splitting technology to allow light to follow an intended optical path with maximal precision, minimal spread, and even distribution.

#### Isotropic Radiant Optic™ (IRO™)

The Isotropic Radiant Optic™ (IRO™) is a spherical lens designed with a spike-textured surface through which light rays are diffused outward and equally in all directions.

### LIGHT SOURCE

#### Static white

LEDs are available in 2700K, 3000K, 3500K and 4000K with a choice of 80+ CRI, 90+ CRI, or 95+ CRI, with elevated R9 value for 90+ CRI and above. Color consistency is maintained to within 2 SDCM. All LEDs have been tested in accordance with IESNA LM-80-08 and the results have shown L80 lumen maintenance greater than 60,000 hours. Absolute product photometry is measured and presented in accordance with IESNA LM-79, unless otherwise indicated.

#### Full spectrum static white

The full spectrum LED option offers improved color particularly in the cyan region that is beneficial in both healthcare and circadian lighting strategies. The cyan region in full spectrum LED is richer at the 480 nm range.

### LOCKING MECHANISM

Lightweight, the Mini Pivot Prism, HLO, and Blanks modules easily lock into place on the system track with a simple click. All other modules are secured with a secondary screw-locking mechanism for added protection.



Linear Modules



Accent Modules

### CERTIFICATION

**ETL:** Rated for indoor dry locations. Conforms to UL Standard 1574 and certified to CAN/CSA Standard C22.2 No. 250.0.

### WARRANTY

Lumenwerx provides a five-year limited warranty on electrical and mechanical performance of the luminaires, including the LED boards, drivers, and auxiliary electronics. Lumenwerx will repair or replace defective luminaires or components at our discretion, provided they have been installed and operated in accordance with our specifications. Other limitations apply, please refer to the full warranty on our website.