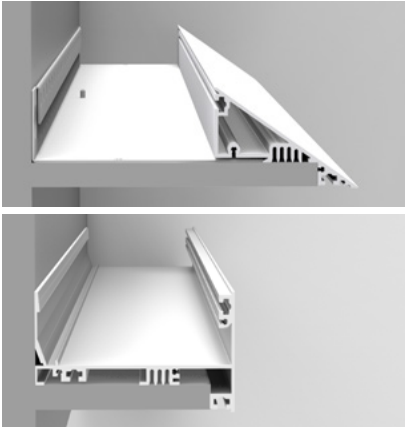


ALCOVE RAMP



LUMENWERX
WWW.LUMENWERX.COM



DESCRIPTION

ALCOVE Ramp is an enclosure Ramp measures 2 5/8" high by 8 1/2" deep and is available in both 90° and 35° angle ramp finish.

We make it simple to design patterns customized for you. While our standard is a 90° corner, we can customize angles to suit your needs.

PROJECT: _____

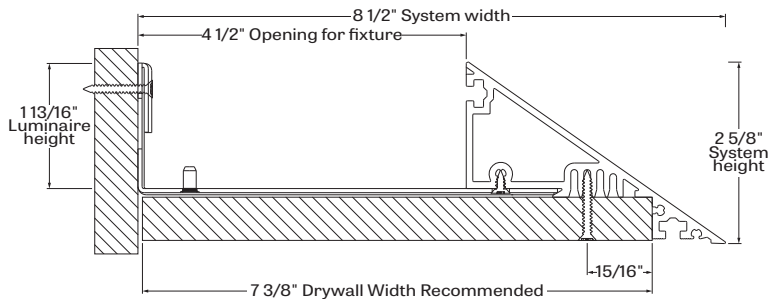
TYPE: _____

NOTES: _____

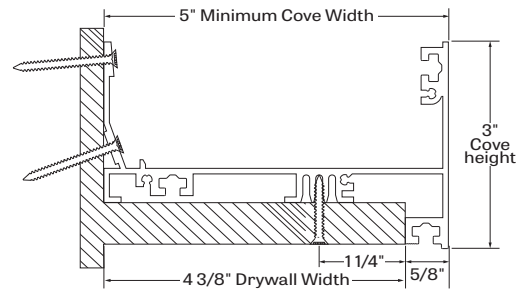
ORDER GUIDE

ALCRA		
PRODUCT ID	RAMP LENGTH	MOUNTING
ALCRA - alcove ramp	#FT - nominal length in feet #IN - length in inches Continuous Run - for luminaires over 12'	COV35 - cove ramp 35 degrees COV90 - cove ramp 90 degrees

CROSS SECTIONS



ALCRA - alcove ramp 35°



ALCRA - alcove ramp 90°

RAMP LENGTH

ALCOVE is highly flexible and can be installed as a single luminaire up to 12' long (see ordering code) or in continuous runs and patterns with a maximum module length of 8' (to simplify aiming). In continuous runs, modules are connected with easy-to-install joiner kits and electrical quick-connects. Total luminaire length must be 2" shorter than the inside of the cove to permit access to electrical connections.

CONSTRUCTION RAMP

Aluminium plate - Aluminum 0.090" nominal thickness

Steel plate - 16 GA CRS / Cold rolled Steel

Extrusion - Extruded aluminum

End-Plates - Aluminium 0.125" nominal thickness

Aligner - 11 GA CRS / Steel

WEIGHT RAMP

ALCOVE Ramp 4ft - 5.1Kg - 11.4 lb

ALCOVE Ramp 8ft - 10.2Kg - 22.8 lb

ALCOVE Ramp 12ft - 15.3Kg - 34.2 lb

CERTIFICATIONS

ETL - Rated for Indoor Dry/Damp locations. Conforms to UL Standard 1598 and certified to CAN/CSA Standard C22.2 No. 250.0.

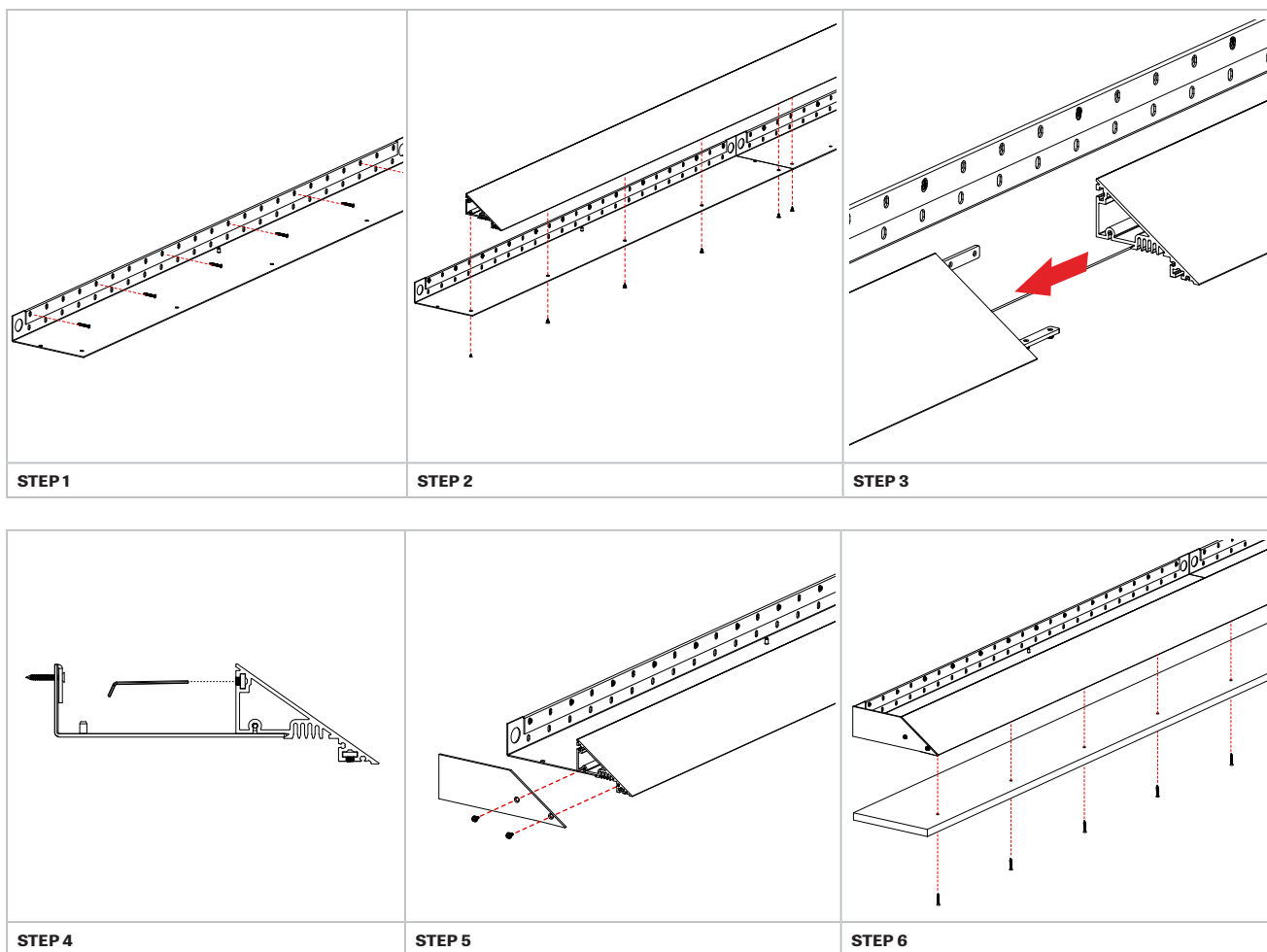
ALCOVE RAMP

INSTALLATION

ALCOVE Ramp eliminates the need to construct a site-built enclosure and can be installed as an individual cove luminaire up to 12' or in continuous runs and patterns.

The ALCOVE Ramp bracket mounts directly to the wall. The sloping fascia attaches to the bracket; in continuous runs, the sections slide together with aligning joiner brackets. A gypsum board bottom panel and finished painting are by others.

The ALCOVE luminaire fits neatly into the completed enclosure. In continuous runs, modules (maximum length of 8' to facilitate aiming) are connected with easy-to-install joiner kits and electrical quick-connects.



ALCOVE Ramp

We supply:

1. Steel sheet-metal plates (48" long), enough to cover the needed length (max. 48").
2. One aluminium sheet-metal plate that can be field-cut to the exact length needed.
3. Aluminium extrusions 8FT/12FT long enough to exceed the needed total length.
4. End plates (1/8" thick) if needed.
5. Flat-Head screws used for attaching the extrusion to the sheet-metal plates.