

ARQ FLAIR ACOUSTIX

PENDANT

DIRECT/INDIRECT, DIRECT

LUMENWERX



Project: _____

Type: _____



DESCRIPTION

Part of the Arq Acoustix series, the Arq Flair is an acoustic pendant equipped with an arc-shaped shade made of sound-absorbing felt created from recycled bottles. Sporting a contemporary look and feel with its cylindrical diffuser, the luminaire can easily blend in to any space while contributing to its visual and acoustic comfort.

Order Guide

LUMINAIRE ID	SIZE	DISTRIBUTION	INDIRECT OPTIC Specify NA for Direct	LIGHT SOURCE	
ARQFLACOP	24IN				
ARQFLACOP - Arq Flair Acoustix Pendant	24IN - Ø 24"	DI - Direct/Indirect D - Direct	FFFH - Fully frosted flush diffuser FF14 - Fully frosted 1/4" diffuser FF34 - Fully frosted 3/4" diffuser NA - Not applicable	SW - Static white FS - Full spectrum	SOLA - Dim-to-warm single channel control 35K to 22K DUO - Tunable white 2-channel control 65K to 27K
DIRECT BEAM	COLOR QUALITY	CRI	COLOR TEMP.	ACCESSORY	VOLTAGE
15DEG - 15° Narrow spot 25DEG - 25° Spot 35DEG - 35° Narrow flood 50DEG - 50° Wide flood	2STP ¹ - 2 Step MacAdam Ellipse 3STP - 3 Step MacAdam Ellipse ¹ Not available with full spectrum.	90CRI ² - 90 CRI 95CRI - 95 CRI 80CRI ² - 80 CRI ² Not available with full spectrum.	27K - 2700K 30K - 3000K 35K - 3500K 40K - 4000K	LSDL - Soft diffused lens, Solite LFDL - Frosted diffused lens LCL - Clear lens HEX - Hex louver	120V - 120V 277V - 277V UNV - 120V-277V 347V ³ - 347V ³ Available with RD1 driver only. Please consult factory.
50DEG - 50° Wide flood	3STP - 3 Step MacAdam Ellipse	90CRI - 90 CRI	SOLA - Dim-to-warm single channel control 35K to 22K DUO - Tunable white 2-channel control 65K to 27K		
DIRECT WATTAGE ⁴		INDIRECT WATTAGE ⁶ Specify NA for Direct		DIMMING ⁷	
10W - 10 W output, up to 1092 lm 14W - 14 W output, up to 1482 lm 20W ⁵ - 20 W output, up to 2035 lm ⁴ Lumen outputs are reduced with full spectrum, consult factory. ⁵ Not available for a DI fixture.	10W - 10 W output, up to 742 lm 14W - 14 W output, up to 1007 lm NA - Not applicable ⁶ Lumen outputs are reduced with full spectrum, consult factory.	CANOPY DRIVER D1 - 1% 0-10V ELV ⁸ - ELV 120V TRI ⁸ - TRIAC 120V ⁷ PoE (Power-over-Ethernet) compatible. Consult factory for details. ⁸ Available with 120V only.	REMOTE DRIVER ⁹ RD1 - 1% 0-10V RELV ¹⁰ - ELV 120V RTRI ¹⁰ - TRIAC 120V ⁹ A remote driver box is provided, see page 4 for details. ¹⁰ Available with 120V only. ¹¹ On-site commissioning is required.	RLDE1 ¹¹ - Lutron Hi-Lume 1% Eco RDA ¹¹ - DALI RELD1 - eldoLED 1% ECOdrive 0-10V RELD0 - eldoLED 0.1% SOLOdrive 0-10V	RDD1 - Dual 0-10V input for CCT/intensity RPSQ0 ¹¹ - Lutron T-Series 1% tunable white
SOLA 12W - 12 W output, up to 725 lm	SOLA 12W - 12 W output, up to 431 lm	SOLA SD1 - Single 0-10V input SELV ⁸ - ELV 120V STRI ⁸ - TRIAC 120V	SOLA RSD1 - Single 0-10V input RSELV ¹⁰ - ELV 120V RSTRI ¹⁰ - TRIAC 120V	DUO RDMX ¹¹ - DMX RDDA ¹¹ - DALI DT6 RDDA8 ¹¹ - DALI DT8	
DUO 11W - 11 W output, up to 525 lm	DUO 11W - 11 W output, up to 285 lm NA - Not applicable				
ELECTRICAL	CYLINDER FINISH	FELT COLOR	CANOPY TYPE ¹³	CANOPY FINISH	SUSPENSION
1C - 1 circuit 2C ¹² - 2 circuits ¹² Available with Direct/Indirect with remote driver only.	FTMW - Textured matte white FTMB - Textured matte black CF# - Custom finish, specify RAL#	FONCDN - Outside Fog, inside Cloudy MDNCDN - Outside Midnight blue, inside Cloudy LENSAN - Outside Latte, inside Sand CYNSAN - Outside Cherry, inside Sand	FLR - Flat round canopy, 4" octagonal junction box CDR - Conduit feed, round canopy DMNC ¹⁴ - Direct mount, new construction DMRM ^{14,15} - Direct mount, remodel DR ¹⁶ - Deep round canopy, driver(s) in canopy ¹³ See page 4 for details. ¹⁴ Remote driver only. ¹⁵ Single wiring entry only. No daisy chain connections allowed. ¹⁶ Available with canopy driver only.	FTMW - Textured matte white FTMB - Textured matte black CF# - Custom finish, specify RAL#	POWER CORD ¹⁷ BPC##IN - Black PVC WPC##IN - White PVC ¹⁷ Min 36" - max 72", specify length (##) in inches.

ARQ FLAIR ACOUSTIX

PENDANT

DIRECT/INDIRECT, DIRECT

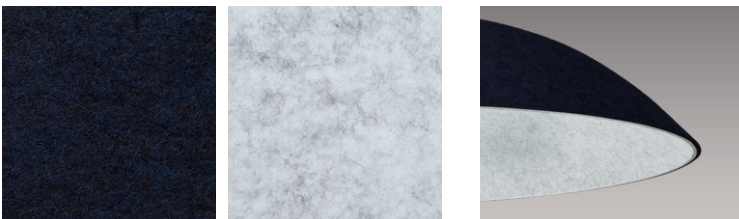
LUMENWERX

Felt Color



FONCDN

Outside Fog, inside Cloudy



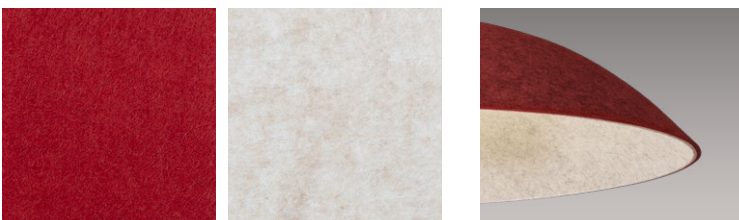
MDNCDN

Outside Midnight blue, inside Cloudy



LENSAN

Outside Latte, inside Sand



CYN SAN

Outside Cherry, inside Sand

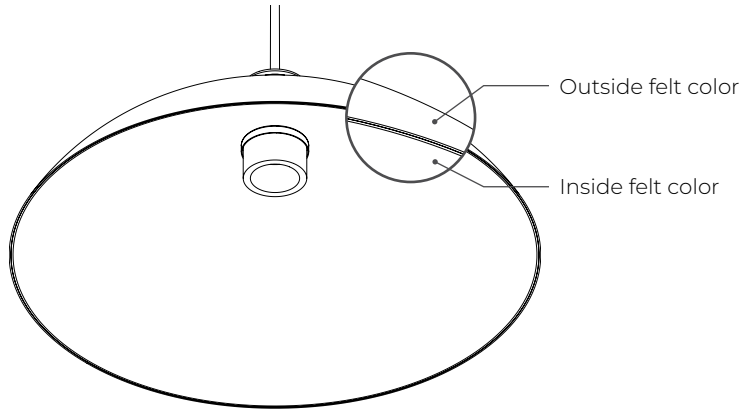
ARQ FLAIR ACOUSTIX

PENDANT

DIRECT/INDIRECT, DIRECT

LUMENWERX

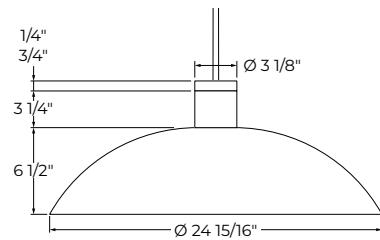
Overview



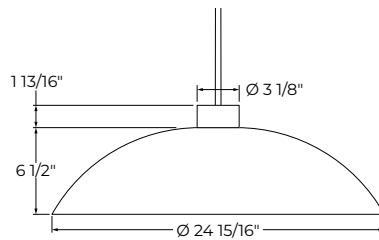
Dimensions

SIDE VIEW

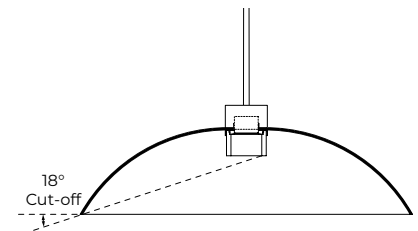
Direct/Indirect



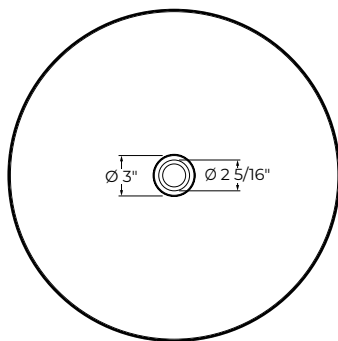
Direct



CUT-OFF ANGLE



BOTTOM VIEW



ARQ FLAIR ACOUSTIX

LUMENWERX

PENDANT

DIRECT/INDIRECT, DIRECT

Mounting

CANOPY

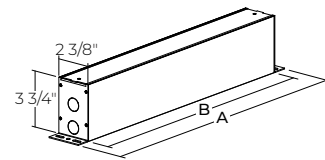
CANOPY DRIVER				REMOTE DRIVER			
Order code	FLR Flat round canopy, 4" octagonal junction box	CDR Conduit feed, round canopy	DR Deep round canopy, driver(s) in canopy	FLR Flat round canopy, 4" octagonal junction box	CDR Conduit feed, round canopy	DMNC Direct mount, new construction	DMRM Direct mount, remodel
Canopy type							
Distribution	Direct		Direct/Indirect Direct	Direct/Indirect Direct			
Canopy size	Ø 4 5/8" Height 1/4"	Ø 5 1/2" Height 1 15/16"	Ø 5 5/8" Height 1 3/8"	Ø 4 5/8" Height 1/4"	Ø 5 1/2" Height 1 15/16"	Ø 3 1/8" Height 2"	
	<u>Junction box requirements for FLR</u> Deep j-box (2 1/8" deep)		D/I - 2 drivers in canopy D - 1 driver in canopy				Single wiring entry only. No daisy chain connections allowed.

SUSPENSION

POWER CORD
Power Cord Lengths
Min 36" Max 72"

REMOTE DRIVER BOX

RDB8 / RDB18 / RDB24



	RDB8	RDB18	RDB24
A	10"	20"	26"
B	8"	18"	24"
DRIVER	RD1 - 1% 0-10V RELV - ELV 120V RTRI - TRIAC 120V SOLA RSDI - Single 0-10V input RSELV - ELV 120V RSTRI - TRIAC 120V	RLDEI - Lutron Hi-Lume 1% Eco RDA - DALI RELDI - eldoLED 1% ECOdrive 0-10V RELD0 - eldoLED 0.1% SOLOdrive 0-10V	DUO RDMX - DMX RDDA - DALI DT6 RDDA8 - DALI DT8 RDD1 - Dual 0-10V input for CCT/intensity RPSQ0 - Lutron T-Series 1% tunable white

ARQ FLAIR ACOUSTIX

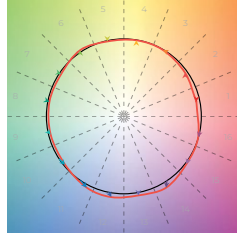
LUMENWERX

PENDANT

DIRECT/INDIRECT, DIRECT

Color Quality

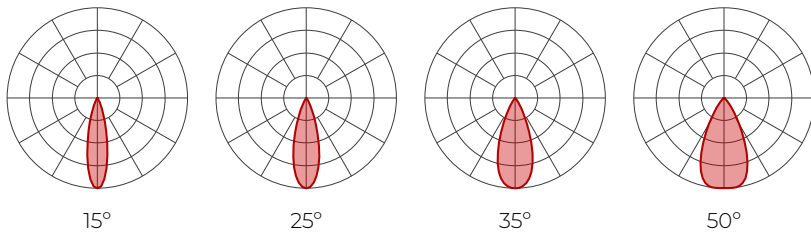
COLOR QUALITY - 3500K	
TM-30 R _r	90
TM-30 R _g	100
CRI	90
R9	> 50



Photometrics

Please follow the multiplier tables to ensure correct lumen value. Beams, CCT, and accessories will change the lumen value.

DIRECT



Delivered Lumens - At 35K, with LSDL lens option

CRI	90 CRI				95 CRI				80 CRI			
	15	25	35	50	15	25	35	50	15	25	35	50
10 W	966	1021	1004	897	743	785	772	690	1032	1092	1073	959
14 W	1311	1387	1363	1218	1008	1066	1048	937	1401	1482	1457	1302
20 W	1800	1904	1872	1673	1384	1464	1439	1286	1924	2035	2001	1788

Efficacy Based on Delivered Lumens

CRI	90 CRI				95 CRI				80 CRI			
	15	25	35	50	15	25	35	50	15	25	35	50
10 W	97	102	100	90	74	79	77	69	103	109	107	96
14 W	94	99	97	87	72	76	75	67	100	106	104	93
20 W	90	95	94	84	69	73	72	64	96	102	100	89

MULTIPLIERS

CCT	
2700K	0.9
3000K	0.95
3500K	1
4000K	1.05

ACCESSORIES	
Soft diffused lens, Solite	1
Frosted lens	0.8
Clear lens	1.1
Hex louver	0.86

For SOLA and DUO, please consult factory.



ARQ FLAIR ACOUSTIX

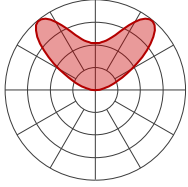
LUMENWERX

PENDANT

DIRECT/INDIRECT, DIRECT

INDIRECT

Fully frosted flush



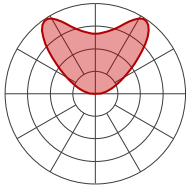
Delivered Lumens - At 35K

CRI	90 CRI	95 CRI	80 CRI
10 W	524	403	560
14 W	711	547	760

Efficacy Based on Delivered Lumens

CRI	90 CRI	95 CRI	80 CRI
10 W	52	40	56
14 W	51	39	54

Fully frosted 1/4"



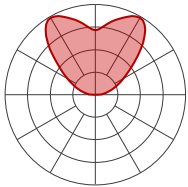
Delivered Lumens - At 35K

CRI	90 CRI	95 CRI	80 CRI
10 W	664	510	709
14 W	901	693	963

Efficacy Based on Delivered Lumens

CRI	90 CRI	95 CRI	80 CRI
10 W	66	51	71
14 W	64	49	69

Fully frosted 3/4"



Delivered Lumens - At 35K

CRI	90 CRI	95 CRI	80 CRI
10 W	694	534	742
14 W	942	725	1007

Efficacy Based on Delivered Lumens

CRI	90 CRI	95 CRI	80 CRI
10 W	69	53	74
14 W	67	52	72

MULTIPLIERS

CCT	
2700K	0.9
3000K	0.95
3500K	1
4000K	1.05

For SOLA and DUO, please consult factory.

DIRECT/INDIRECT - EFFICACY CALCULATION

For Direct/Indirect performance values, follow the formula.

$$\frac{\left(\begin{array}{c} \text{DIRECT} \\ \text{DELIVERED LM} \end{array} + \begin{array}{c} \text{INDIRECT} \\ \text{DELIVERED LM} \end{array} \right)}{\left(\begin{array}{c} \text{DIRECT} \\ \text{WATTAGE} \end{array} + \begin{array}{c} \text{INDIRECT} \\ \text{WATTAGE} \end{array} \right)} = \text{EFFICACY}$$

ARQ FLAIR ACOUSTIX

LUMENWERX

PENDANT

DIRECT/INDIRECT, DIRECT

Acoustic Calculator

Using the Lumenwerx Acoustix Value Calculator table, you can determine the number of acoustic luminaires required in a space by fixture type. We have three levels of recommended sound reduction: good, better, and best. Choosing one of these options will reduce the sound accordingly. The best option indicates the best acoustic improvement. Calculations are based on a standard ceiling height of 9 feet.



- 1 Calculate the square feet of your room (L x W).
- 2 Choose the level of acoustical improvement you are looking for, and find the corresponding value based on your room dimension and luminaire configuration.

% in reduction in reverberation time		
😊	GOOD	25%
😊😊	BETTER	40%
😊😊😊	BEST	50%

LUMINAIRE	Room dimensions under 300 sq ft			Room dimensions over 300 sq ft		
	GOOD 😊	BETTER 😊😊	BEST 😊😊😊	GOOD 😊	BETTER 😊😊	BEST 😊😊😊
Arq Flair Acoustix, Ø 24"	25	14	11	39	22	17

- 3 Use the Lumenwerx Acoustix Value Formula to determine the number of luminaires needed in the room.

Square feet ÷ Value = Number of luminaires

Example:

Luminaires: Arq Flair Acoustix, Ø 24"
Room square feet: L: 20 ft x W: 18 ft = 360 sq ft
Desired acoustical improvement: Better = 22
Number of luminaires needed in the room: 360 ÷ 22 = 16 luminaires

NOTES:

Lumenwerx acoustic calculators were developed to act as a guide. For precise acoustic performance in a space, please consult an acoustician.

ARQ FLAIR ACOUSTIX

PENDANT

DIRECT/INDIRECT, DIRECT

LUMENWERX

Technical Specifications

OPTIC

XPoint™ Refraction Technology optics provide precise optical control in a remarkably compact form. Micro optical paths from the chip on board converge and then disperse in precise beam angles, resulting in a crisp and exacting light quality.

LIGHT SOURCE

Compact COB (Chip-On-Board) LED module, available in 2700K, 3000K, 3500K and 4000K with a choice of 80 CRI, 90 CRI, or 95 CRI, with elevated R9 value for 90 CRI and above. Color consistency is maintained to within 2 SDCM. All LEDs have been tested in accordance with IESNA LM-80-08 and the results have shown L80 lumen maintenance greater than 60,000 hours. Absolute product photometry is measured and presented in accordance with IESNA LM-79, unless otherwise indicated. Optional full spectrum LEDs can be incorporated in the fixture to increase Cyanosis Observation Index (COI) and assist in regulating circadian rhythms.

CHROMAWERX

Chromawerx SOLA

Chromawerx SOLA is single-channel control that dims output while warming the color temperature in a pre-determined relationship. A simple analog control adjusts a specially populated LED array to emulate the effect of dimming a filament source.

Chromawerx DUO

Chromawerx DUO offers a two-channel control system which uses analog or digital protocols for synchronous control of both cool (6500K) to warm (2700K) LED arrays - maintaining a CRI above 90. The range of color DUO offers is useful for entraining circadian rhythms, stimulating alertness, and compensating for jet lag among other applications. The Chromawerx drivers are programmed to limit maximum light output and power usage across all color temperatures. When paired with DALI drivers (DDA/DDA8), color tuning follows a linear dimming curve.



WELL for Light - The WELL building standard focuses on light quality in several features. There are three categories that are fully attributed to the construction and features of a luminaire. In WELL V1, it's Feature 54 Circadian Lighting, Feature 55 Glare Control, and Feature 58 Color Quality. In WELL V2, it's Feature L03 Circadian Lighting, Feature L04 Glare Control, and Feature L07 Electric Light Quality.

This fixture meets Features:

- Feature 54 or L03 when full spectrum or Duo is selected
- Feature 58 or L07 when 90 CRI or above is selected

All LED drivers used at Lumenwerx are deemed to have a low risk level of flicker, of 5 % or less below 90Hz operational as defined by IEEE standard 1789-2015 LED.



WELL for Sound - This luminaire is recommended for use as an acoustical absorption surface to limit reverberation times (RT) in a given space. This luminaire contributes to noise reduction and vibration dampening to promote focus and concentration. Reverberation needs to be calculated in each space based on the materials used.



WELL for Mind - This luminaire meets WELL for mind as it is a human centric luminaire offering quality light, excellent color, and smooth optics. If any of these features are incorporated in a luminaire, it can improve the ability to focus, concentrate, and persist longer on a given task. This fixture harmoniously operates in a space to assist the mind.

For more information, please contact well@lumenwerx.com

BEAM ANGLES



ELECTRICAL

Unless otherwise specified, dimming down to 1%. At maximum driver load: efficiency>84%, PF>0.9, THD<20%.

Canopy driver: 0-10V, ELV, TRIAC.

Remote driver: 0-10V, ELV, TRIAC, Lutron Hi-Lume 1% EcoSystem, DALI, eldoLED 0.1% SOLOdrive 0-10V, eldoLED 1% ECOdrive 0-10V, DMX, Lutron T-series (tunable white).

PoE

Depending on the PoE manufacturer selected, Lumenwerx will install the node in factory as either integral to the luminaire, or as a remote module. Factory programming of the PoE node may or may not enable the following functionalities: lumen package, Duo (tunable white), emergency battery backup, and sensor integration. These must be addressed and evaluated on a case-by-case basis.

ACOUSTIC FINISH

Material is 100% polyester containing up to 50% of recycled plastic bottles (PET) with an ASTM E-84 Class A fire rating and is moisture resistant.

ARQ FLAIR ACOUSTIX

PENDANT

DIRECT/INDIRECT, DIRECT

LUMENWERX

CARE

Remove dust and debris with a clean, dry, soft, lint-free cloth, or vacuum.

CONSTRUCTION

Housing: Die-cast and extruded aluminum

Glow ring: Acrylic

Power cord: Black and white PVC. 36" to 72" standard length

Canopy: Flat, conduit feed, direct, and deep

Finish: Textured matte white, black. Custom colors also available (provide RAL #).

WEIGHT

Direct/Indirect	Direct
6.99 lbs - 3.17 kg	4.19 lbs - 1.9 kg

ACCESSORIES



Soft diffused lens, Solite



Frosted diffused lens



Clear lens



Hex Louver

ENVIRONMENT

Ambient temperature at fixture location shall not exceed 30°C/86°F. For indoor use only.

CERTIFICATION

ETL - Rated for Indoor Dry/Damp locations. Conforms to UL Standard 1598 and certified to CAN/CSA Standard C22.2 No. 250.0.

WARRANTY

Lumenwerx provides a five-year limited warranty of electrical and mechanical performance of the luminaires, including the LED boards, drivers, and auxiliary electronics. Lumenwerx will repair or replace defective luminaires or components at our discretion, provided they have been installed and operated in accordance with our specifications. Other limitations apply, please refer to the full warranty on our website.