

# DOT

STATIC WHITE, FULL SPECTRUM

# LUMENWERX

Project: \_\_\_\_\_

Type: \_\_\_\_\_



## DESCRIPTION

The Dot, Box, and Dot Cylinder are individual mounting systems that can be used on their own as solo lighting fixtures, or they can act as complements or supplements to Pivot track systems on a larger scale. Designed to be surface mounted on ceilings or walls, they are equipped with flat, conduit feed, or direct mount canopies, which can be round or square. See separate spec sheets for details.



## Order Guide

LUMINAIRE ID	HEIGHT	FINISH	BAFFLE	BAFFLE FINISH
<b>DOT1</b> - Dot 1" <b>DOT2</b> - Dot 2"	<b>2.65IN</b> - 2.65" <b>4IN</b> - 4"	<b>TMB</b> - Textured matte black <b>TMW</b> - Textured matte white <b>CF#</b> - Custom finish, specify RAL #  See page 4 for more finish options	<b>SDB</b> - Standard baffle <b>DCB</b> <sup>1</sup> - Decorative baffle  <sup>1</sup> Recommended when a different finish is desired for the baffle.	<b>TMB</b> - Textured matte black <b>TMW</b> - Textured matte white <b>CF#</b> - Custom finish, specify RAL #  See page 4 for more finish options

LIGHT SOURCE	BEAM ANGLE	CRI	LUMEN PACKAGE <sup>3</sup>	COLOR TEMP.	VOLTAGE
<b>SW</b> - Static white <b>FS</b> - Full spectrum	<b>SPT</b> - Spot, 20° <b>FLD</b> - Flood, 35° <b>WFL</b> - Wide flood, 50°	<b>80CRI</b> <sup>2</sup> - 80 CRI <b>90CRI</b> <sup>2</sup> - 90 CRI <b>95CRI</b> - 95 CRI  <sup>2</sup> Not available with full spectrum.	<b>900LM</b> - 900 lm, 12.2 W (1IN at 2.65" height) <b>1120LM</b> - 1120 lm, 15.9 W (1IN at 4" height) <b>1100LM</b> - 1100 lm, 15.9 W (2IN at 2.65" height) <b>1260LM</b> - 1260 lm, 17.8 W (2IN at 4" height)  <sup>3</sup> Lumen outputs are reduced with full spectrum, consult factory.	<b>27K</b> - 2700K <b>30K</b> - 3000K <b>35K</b> - 3500K <b>40K</b> - 4000K	<b>120V</b> - 120V <b>277V</b> - 277V <b>UNV</b> - 120V-277V

DRIVER <sup>4</sup>		AIMABLE ARM <sup>8</sup>	CANOPY	CANOPY FINISH Specify NA for DM
<b>CANOPY DRIVER</b>	<b>REMOTE DRIVER</b>	<b>FH</b> - Flush <b>S3</b> - 3" long stem  <sup>8</sup> 90° tilt, 355 rotation.	<b>FLR</b> - Flat round canopy, 4" octagonal junction box <b>FLS</b> - Flat square canopy, 4" octagonal junction box <b>CDR</b> - Conduit feed, round canopy <b>CDS</b> - Conduit feed, square canopy <b>DM</b> <sup>9</sup> - Direct mount  <sup>9</sup> Available with remote driver only.	<b>TMB</b> - Textured matte black <b>TMW</b> - Textured matte white <b>CF#</b> - Custom finish, specify RAL# <b>NA</b> - Not applicable  See page 4 for more finish options
<b>D1</b> - 1% 0-10V <b>ELV</b> <sup>5</sup> - ELV 120V <b>TRI</b> <sup>5</sup> - TRIAC 120V	<b>RD1</b> - 1% 0-10V <b>RELV</b> <sup>5</sup> - ELV 120V <b>RTRI</b> <sup>5</sup> - TRIAC 120V <b>RLTEA2W</b> <sup>5</sup> - Lutron 1% - 2 wire FP 120V <b>RLDE1</b> <sup>6</sup> - Lutron Hi-lume 1% Eco	<b>RDA</b> <sup>6</sup> - DALI <b>RELD0</b> - eldoLED 0.1% 0-10V <b>RELD1</b> - eldoLED 1% 0-10V <b>+EB</b> <sup>7</sup> - Emergency battery		

<sup>4</sup> PoE (Power-over-Ethernet) compatible. Consult factory for details.

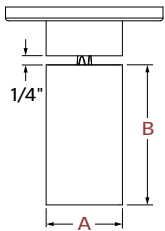
<sup>5</sup> Available with 120V only.

<sup>6</sup> On-site commissioning is required.

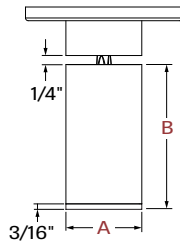
<sup>7</sup> For emergency battery, code will be like the following example: **RD1+EB**.

## Dimensions

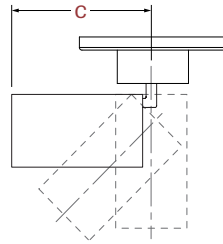
**Flush Arm** (shown with Dot 2IN, flat canopy option)



Flush Arm  
- Standard baffle



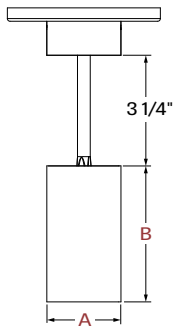
Flush Arm  
- Decorative baffle



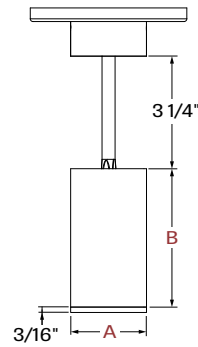
Maximum length  
- 90° tilt

SIZE	A ACTUAL SIZE	B TOTAL LENGTH		C MAX. LENGTH (90° tilt)	
		Standard baffle	Decorative baffle	Standard baffle	Decorative baffle
1IN	Ø 1 21/32"	2 5/8"	2 13/16"	2 15/16"	3 1/8"
		4"	4 3/16"	4 5/16"	4 7/16"
2IN	Ø 2 3/16"	2 5/8"	2 13/16"	2 15/16"	3 1/8"
		4"	4 3/16"	4 5/16"	4 7/16"

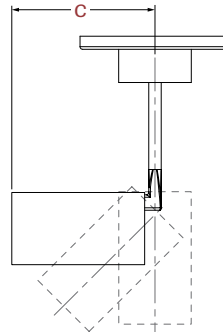
**Stem** (shown with Dot 2IN, flat canopy option)



Stem  
- Standard baffle



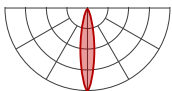
Stem  
- Decorative baffle



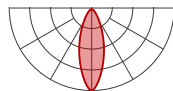
Maximum length  
- 90° tilt

SIZE	A ACTUAL SIZE	B TOTAL LENGTH		C MAX. LENGTH (90° tilt)	
		Standard baffle	Decorative baffle	Standard baffle	Decorative baffle
1IN	Ø 1 21/32"	2 5/8"	2 13/16"	2 15/16"	3 1/8"
		4"	4 3/16"	4 5/16"	4 7/16"
2IN	Ø 2 3/16"	2 5/8"	2 13/16"	2 15/16"	3 1/8"
		4"	4 3/16"	4 5/16"	4 7/16"

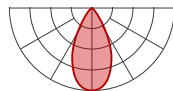
## Photometrics



**SPT** - Spot, 20°



**FLD** - Flood, 35°



**WFL** - Wide flood, 50°

Module Wattage (W)

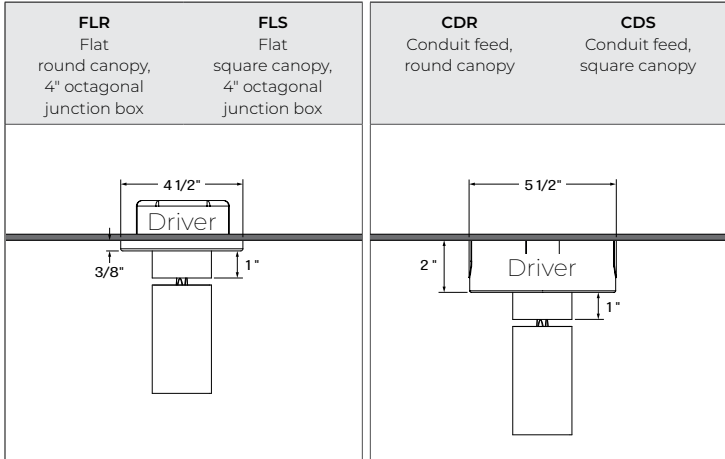
SIZE	HEIGHT	LUMEN PACKAGE at 35K/80CRI	WATTAGE
1IN	2.65"	900	12.2 W
	4"	1120	15.9 W
2IN	2.65"	1100	15.9 W
	4"	1260	17.8 W

Multiplier - CCT/CRI

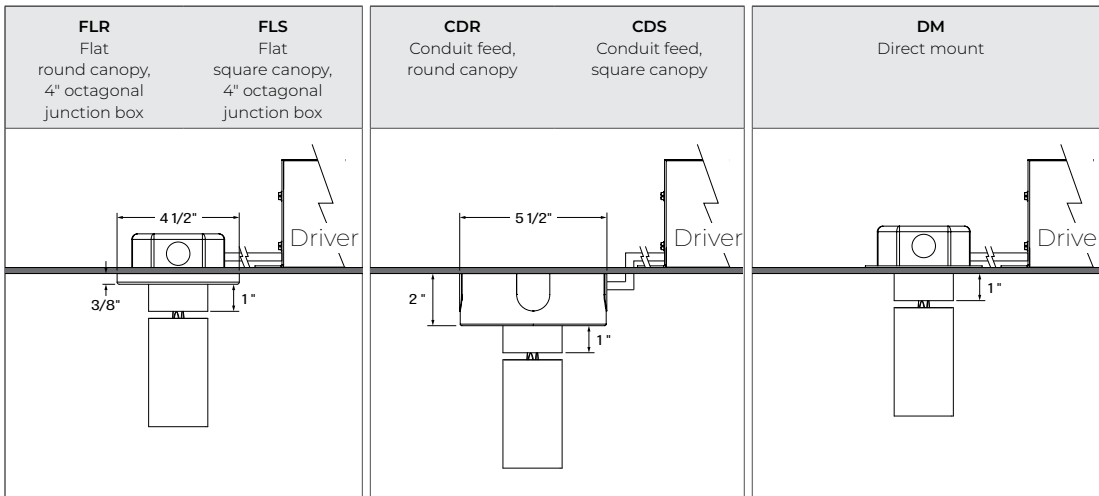
CCT (K)	Lumens		
	CRI80	CRI90	CRI95
2700	0.94	0.77	0.72
3000	0.96	0.82	0.75
3500	1.00	0.85	0.81
4000	1.02	0.87	0.79

## Mounting

### Canopy driver

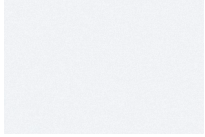


### Remote driver

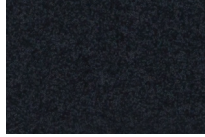


### Finishes

#### Standard



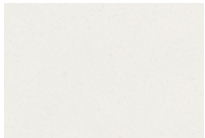
**TMW** - Textured Matte White



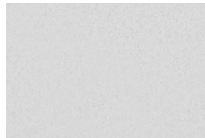
**TMB** - Textured Matte Black

#### Custom

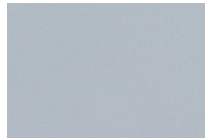
##### Neutrals



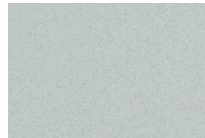
**CRM** - Cream



**GRY** - Gray



**STG** - Steel Gray



**SAG** - Sage Gray

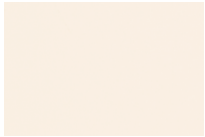


**MOG** - Moss Gray



**BLB** - Black Blue

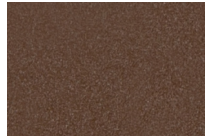
##### Designer



**ALM** - Almond



**QRZ** - Quartzite Texture



**RST** - Rust Fine Texture



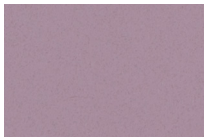
**GRB** - Green Beige



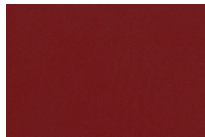
**YLW** - Yellow



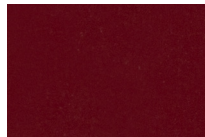
**SLM** - Salmon Pink



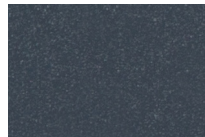
**VIO** - Pastel Violet



**RED** - Red



**PRR** - Purple Red



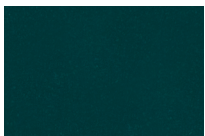
**SMB** - Storm Blue



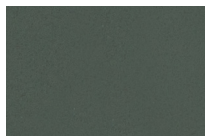
**DPB** - Deep Blue



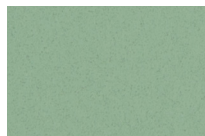
**OCB** - Ocean Blue



**BLG** - Blue Green



**GNS** - Green Smoke

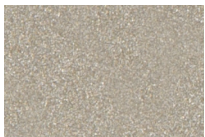


**MNG** - Mint Green

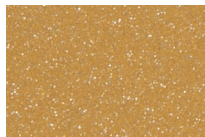


**LMG** - Lime Green

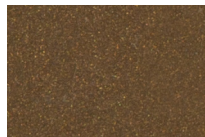
##### Metallics



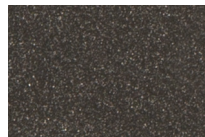
**SND** - Sand



**GLD** - Gold



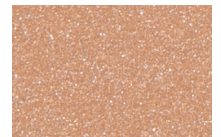
**DGD** - Dark Gold



**IRN** - Iron Ore



**CNY** - Canyon



**SBP** - Sandblast Copper



**SWD** - Sandalwood

Some colors may have longer lead time.

## Technical Specifications

### OPTICS

#### CircaFlex™ Optic

The CircaFlex™ Optic, at just 1.2", uses advanced beam-splitting technology to allow light to follow an intended optical path with maximal precision, minimal spread, and even distribution.

### LIGHT SOURCE - STATIC WHITE

Compact COB (Chip-On-Board) LED module, available in 2700K, 3000K, 3500K and 4000K with a choice of 80 CRI, 90 CRI, or 95 CRI, with elevated R9 value for 90 CRI and above. Color consistency is maintained to within 2 SDCM. All LEDs have been tested in accordance with IESNA LM-80-08 and the results have shown L80 lumen maintenance greater than 60,000 hours. Absolute product photometry is measured and presented in accordance with IESNA LM-79, unless otherwise indicated.

### LIGHT SOURCE - FULL SPECTRUM

The full spectrum LED option offers improved color particularly in the cyan region that is beneficial in both healthcare and circadian lighting strategies. The cyan region in full spectrum LED is richer at the 480 nm range.



**WELL for Light** - The WELL building standard focuses on light quality in several features. There are three categories that are fully attributed to the construction and features of a luminaire. In WELL V1, it's Feature 54 Circadian Lighting, Feature 55 Glare Control, and Feature 58 Color Quality. In WELL V2, it's Feature L03 Circadian Lighting, Feature L04 Glare Control, and Feature L07 Electric Light Quality.

This fixture meets Features:

- Feature 54 or L03 when full spectrum LED is selected
- Feature 58 or L07 when 90 CRI or above is selected

All LED drivers used at Lumenwerx are deemed to have a low risk level of flicker, of 5 % or less below 90Hz operational as defined by IEEE standard 1789-2015 LED.



**WELL for Mind** - This luminaire meets WELL for mind as it is a human centric luminaire offering quality light, excellent color, and smooth optics. If any of these features are incorporated in a luminaire, it can improve the ability to focus, concentrate, and persist longer on a given task. This fixture harmoniously operates in a space to assist the mind.

For more information, please contact [well@lumenwerx.com](mailto:well@lumenwerx.com)

### ELECTRICAL

Unless otherwise specified, dimming down to 1%. At maximum driver load: efficiency>84%, PF>0.9, THD<20%.

**Canopy driver:** 0-10V, ELV, TRIAC.

**Remote driver:** 0-10V, ELV, TRIAC, Lutron Hi-Lume 1% 2-wire and 1% EcoSystem, DALI, eldoLED 0.1% SOLOdrive 0-10V, eldoLED 1% ECOdrive 0-10V

**Emergency Battery Option:** Remotely-installed, long-life, high-temperature, maintenance-free, Bodine Lithium-Ion battery pack with self-test functionality, test switch and charge indicator. IOTA and Fulham options available upon request. Minimum of 90 minutes operation, and recharge time of 24 hours. For fixtures less than 10W, the battery provides 6W of emergency light output. For fixtures 10W and over, the battery provides 10W.

### PoE

Depending on the PoE manufacturer selected, Lumenwerx will install the node in factory as either integral to the luminaire or as a remote module. Factory programming of the PoE node may or may not enable the following functionalities: lumen package, emergency battery backup, and sensor integration. These must be addressed and evaluated on a case-by-case basis.

### CONSTRUCTION

**Housing:** Die-cast and extruded aluminum.

**Canopy:** Flat, conduit feed and direct

**Finish:** Textured matte white and black. Custom colors also available (provide RAL #).

### WEIGHT

SIZE	HEIGHT	WEIGHT	
1IN	2 5/8"	0.55 lb	0.25 kg
	4"	0.77 lb	0.35 kg
2IN	2 5/8"	0.66 lb	0.3 kg
	4"	1.1 lb	0.5 kg

### CERTIFICATION

**ETL** - Rated for Indoor Dry/Damp locations. Conforms to UL Standard 1598 and certified to CAN/CSA Standard C22.2 No. 250.0.

### WARRANTY

Lumenwerx provides a five-year limited warranty of electrical and mechanical performance of the luminaires, including the LED boards, drivers, and auxiliary electronics. Lumenwerx will repair or replace defective luminaires or components at our discretion, provided they have been installed and operated in accordance with our specifications. Other limitations apply, please refer to the full warranty on our website.