



DOT, BOX,
& DOT CYLINDER

DOT, BOX, & DOT CYLINDER

The Dot, Box, and Dot Cylinder are luminaires that can be surface mounted on ceilings or walls. They are equipped with flat, conduit feed, or direct mount canopies, which can be round or square.

2

sizes: 1.5 in and 2 in

3

mountings: Flat, Conduit feed and Direct mount

2

bevel options: Standard and Decorative

DOT



BOX

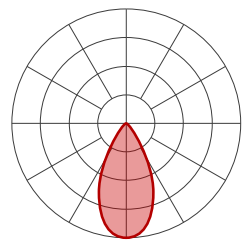
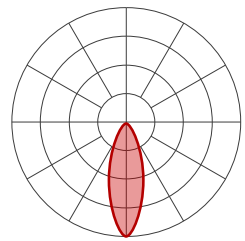
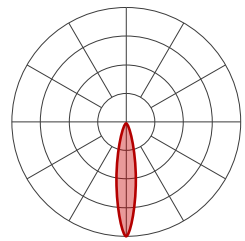


DOT CYLINDER



Performance

The Dot, Box, and Dot Cylinder are equipped with our CircaFlex™ Optic, which, at just 1.2 inches, uses advanced beam-splitting technology to allow light to follow an intended path with maximal precision delivering up to 1500 lumens. The Dot, Box, and Dot Cylinder offer three beam angles: 20, 35, and 50 degrees.



3

beam angles

Up to

1500 lm

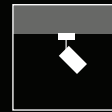
CircaFlex™
technology



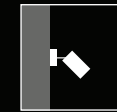


Versatility

MOUNTING OPTIONS

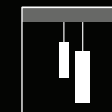


Surface
Ceiling

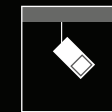


Surface
Wall

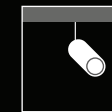
LUMINAIRES



Dot
Cylinder



Box



Dot

COLOR TEMPERATURES



2700K



3000K



3500K



4000K



Full Spectrum LED

BEAM ANGLES



20°



35°

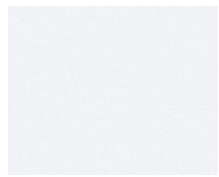


50°

COLOR RENDERING OPTIONS

80 CRI, 90 CRI and 95 CRI

Standard



TEXTURED MATTE WHITE



TEXTURED MATTE BLACK

Premium



CREAM



GRAY



STEEL GRAY



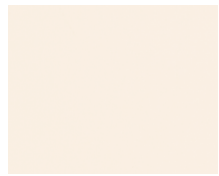
SAGE GRAY



MOSS GRAY



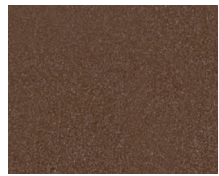
BLACK BLUE



ALMOND



QUARTZITE TEXTURE



RUST FINE TEXTURE



GREEN BEIGE



YELLOW



SALMON PINK



PASTEL VIOLET



RED



PURPLE RED



STORM BLUE



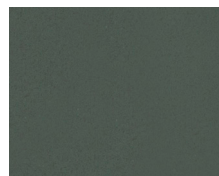
DEEP BLUE



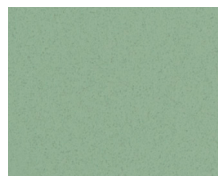
OCEAN BLUE



BLUE GREEN



GREEN SMOKE



MINT GREEN



LIME GREEN



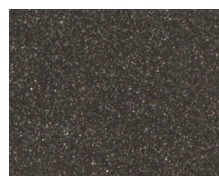
SAND



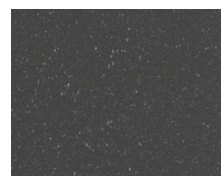
GOLD



DARK GOLD



IRON ORE



CANYON



SANDBLAST COPPER



SANDALWOOD



