



Globe is a fully illuminated sphere designed to deliver balanced illumination within architectural spaces. Crafted from high-quality frosted glass, its internal optic ensures smooth, even light distribution in all directions, providing visual comfort without glare or hotspots. Available in a range of diameters and mounting options, Globe can be used as an individual luminaire with strong visual presence or deployed in larger architectural arrangements.



Globe Brochure



Pivot Globe Module

#### Light Source

Static White

SOLA

DUO



Project: \_\_\_\_\_

Type: \_\_\_\_\_

## Order Guide - Static White

For SOLA Dim-to-Warm and DUO Tunable White order guide, see page 3

LUMINAIRE ID	SIZE	OPTIC	LIGHT SOURCE	CRI
<b>GLBS</b>		<b>IRO</b>		
<b>GLBS</b> - Globe Surface	<b>4IN</b> - Ø 4" <b>6IN</b> - Ø 6" <b>8IN</b> - Ø 8" <b>12IN</b> - Ø 12" <b>16IN</b> - Ø 16"	<b>IRO</b> - Isotropic Radiant Optic	<b>SW</b> - Static white <b>FS</b> - Full spectrum static white	<u>Static white</u> <b>80CRI</b> - 80+ CRI <b>90CRI</b> - 90+ CRI <b>95CRI</b> - 95+ CRI  <u>Full spectrum</u> <b>95CRI</b> - 95+ CRI

LUMEN PACKAGE	COLOR TEMPERATURE	VOLTAGE	DIMMING
Ø 4" <b>525LM</b> - 525 lm Ø 6" <b>800LM</b> - 800 lm Ø 8" <b>1200LM</b> - 1200 lm Ø 12" <b>1900LM</b> - 1900 lm Ø 16" <b>2300LM</b> - 2300 lm	<b>22K</b> <sup>1</sup> - 2200K <b>24K</b> <sup>2</sup> - 2400K <b>27K</b> - 2700K <b>30K</b> - 3000K <b>35K</b> - 3500K <b>40K</b> - 4000K <b>50K</b> <sup>2</sup> - 5000K  <small><sup>1</sup> Only available with 90+ CRI.  <sup>2</sup> Not available with 95+ CRI.</small>	<b>120V</b> - 120V <b>277V</b> - 277V <b>UNV</b> - 120V-277V <b>347V</b> <sup>3</sup> - 347V  <small><sup>3</sup> Only available with RD1 driver. Please consult factory.</small>	<b>CANOPY DRIVER</b> <b>D1</b> - 1% 0-10V <b>ELV</b> <sup>4</sup> - ELV 120V <b>TRI</b> <sup>4</sup> - TRIAC 120V  <small><sup>4</sup> Only available with 120V.  <sup>5</sup> A remote driver box is provided.  <sup>6</sup> On-site commissioning is required.  <sup>7</sup> To specify, add +EB to the selected dimming option, e.g. RD1+EB.  <sup>8</sup> Not available with Ø 4".</small>  <b>REMOTE DRIVER</b> <sup>5</sup> <b>RD1</b> - 1% 0-10V <b>RELV</b> <sup>4</sup> - ELV 120V <b>RTRI</b> <sup>4</sup> - TRIAC 120V <b>RDA</b> <sup>6</sup> - DALI <b>RLDE1</b> <sup>6</sup> - Lutron Hi-lume 1% Eco <b>RELD1</b> - eldoLED 1% ECOdrive 0-10V <b>RELD0</b> - eldoLED 0.1% SOLOdrive 0-10V <b>+EB</b> <sup>7,8</sup> - Emergency battery

ELECTRICAL	CANOPY TYPE <sup>9</sup>	CANOPY FINISH
<b>1C</b>		
<b>1C</b> - 1 circuit	<b>FLR</b> <sup>10</sup> - Flat round canopy, 4" octagonal junction box <b>CDR</b> <sup>10</sup> - Conduit feed, round canopy  <small><sup>9</sup> See page 4 for details.  <sup>10</sup> Ø 16" requires a remote driver.</small>	<b>FTMB</b> - Matte black <b>FTMW</b> - Matte white <b>CF#</b> <sup>11</sup> - Custom finish, specify RAL#  <small><sup>11</sup> See page 6 for more finish options.</small>



Project: \_\_\_\_\_

Type: \_\_\_\_\_

## Order Guide - SOLA Dim-to-Warm and DUO Tunable White

For static white order guide, see page 2

LUMINAIRE ID	SIZE	OPTIC	LIGHT SOURCE	CRI
<b>GLBS</b>		<b>IRO</b>		<b>90CRI</b>
<b>GLBS</b> - Globe Surface	<b>4IN</b> - Ø 4" <b>6IN</b> - Ø 6" <b>8IN</b> - Ø 8" <b>12IN</b> - Ø 12" <b>16IN</b> - Ø 16"	<b>IRO</b> - Isotropic Radiant Optic	<b>SOLA</b> - Dim-to-warm single channel control <b>DUO</b> - Tunable white 2-channel control	<b>90CRI</b> - 90+ CRI

LUMEN PACKAGE	COLOR TEMPERATURE	VOLTAGE	DIMMING
Ø 4" <b>215LM</b> - 215 lm	<u>SOLA</u> <b>30K18K</b> - 3000K to 1800K <b>27K18K</b> - 2700K to 1800K	<b>120V</b> - 120V <b>277V</b> - 277V <b>UNV</b> - 120V-277V	<b>REMOTE DRIVER</b> <sup>1</sup> <u>SOLA</u> <sup>2</sup> <b>RSD1</b> - Single 0-10V input
Ø 6" <b>685LM</b> - 685 lm	<u>DUO</u> <b>65K27K</b> - 6500K to 2700K <b>50K27K</b> - 5000K to 2700K		<u>DUO</u> <b>RDMX</b> <sup>3</sup> - DMX <b>RDDA</b> <sup>3</sup> - DALI DT6 <b>RDDA8</b> <sup>3</sup> - DALI DT8 <b>RDD1</b> - Dual 0-10V input for CCT/intensity <b>RLD2</b> <sup>3</sup> - Lutron DALI-2 digital <b>+EB</b> <sup>4,5</sup> - Emergency battery
Ø 8" <b>800LM</b> - 800 lm			
Ø 12" <b>975LM</b> - 975 lm			
Ø 16" <b>1650LM</b> - 1650 lm			

<sup>1</sup>A remote driver box is provided.

<sup>2</sup>Consult factory for ELV/TRIAC.

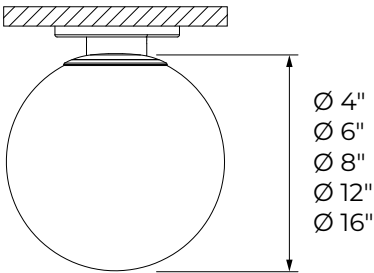
<sup>3</sup>On-site commissioning is required.

<sup>4</sup>To specify, add +EB to the selected dimming option, e.g. RDD1+EB.

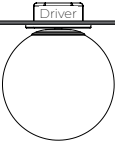
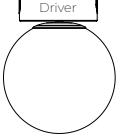
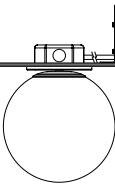
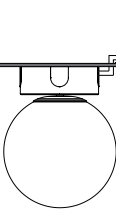
<sup>5</sup>Not available with Ø 4".

ELECTRICAL	CANOPY TYPE <sup>6</sup>	CANOPY FINISH
<b>1C</b>		
<b>1C</b> - 1 circuit	<b>FLR</b> - Flat round canopy, 4" octagonal junction box <b>CDR</b> - Conduit feed, round canopy  <sup>6</sup> See page 4 for details.	<b>FTMB</b> - Matte black <b>FTMW</b> - Matte white <b>CF#</b> <sup>7</sup> - Custom finish, specify RAL#  <sup>7</sup> See page 6 for more finish options.

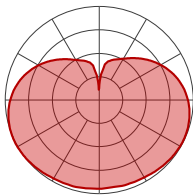
Dimensions



Mounting

CANOPY DRIVER			REMOTE DRIVER		
Order code	FLR Flat round canopy, 4" octagonal junction box	CDR Conduit feed, round canopy	FLR Flat round canopy, 4" octagonal junction box	CDR Conduit feed, round canopy	
Canopy type					
Canopy size	Ø 4 1/2" Height 3/8"	Ø 5 1/2" Height 1 15/16"	Ø 4 1/2" Height 3/8"	Ø 5 1/2" Height 1 15/16"	

Photometrics



Static white  
Values calculated based on 3500K.

SIZE	LM	W	LM/W
Ø 4"	525	10	53
Ø 6"	800	12	67
Ø 8"	1200	14	86
Ø 12"	1900	22	86
Ø 16"	2300	28	82

SOLA / DUO  
Values calculated at high end CCT.

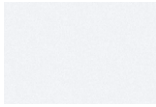
SIZE	LM	W	LM/W
Ø 4"	215	8	27
Ø 6"	685	14	49
Ø 8"	800	14	57
Ø 12"	975	16	61
Ø 16"	1650	28	59

MULTIPLIERS  
Use this table to get results for  
different color temperatures.

CCT	
2200K	0.80
2400K	0.87
2700K	0.94
3000K	0.98
3500K	1
4000K	1.05
5000K	1.05

## Finishes

### Standard



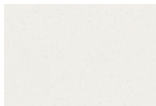
**FTMW** - Matte White



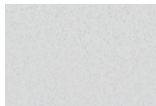
**FTMB** - Matte Black

### Custom

#### Neutrals



**CRM** - Cream



**GRY** - Gray



**STG** - Steel Gray

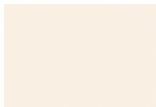


**SAG** - Sage Gray



**BLB** - Black Blue

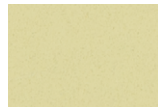
#### Designer



**ALM** - Almond



**RST** - Rust Fine  
Texture



**GRB** - Green Beige



**YLW** - Yellow



**SLM** - Salmon Pink



**VIO** - Pastel Violet



**RED** - Red



**PRR** - Purple Red



**SMB** - Storm Blue



**DPB** - Deep Blue



**OCB** - Ocean Blue



**BLG** - Blue Green

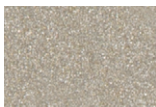


**GNS** - Green Smoke

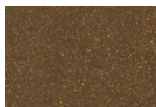


**MNG** - Mint Green

#### Metallics



**CHP** - Champagne



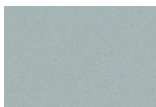
**DBZ** - Dark Bronze



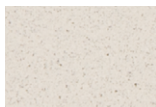
**CNY** - Canyon

### Premium Custom

#### Neutrals



**MOG** - Moss Gray



**QRZ** - Quartzite  
Texture



**LMG** - Lime Green



**GLD** - Gold



**IRN** - Iron Ore



**SBP** - Sandblast  
Copper



**SWD** - Sandalwood

Some colors may have longer lead time.

## Technical Specifications

### OPTIC

#### Isotropic Radiant Optic™ (IRO™)

The Isotropic Radiant Optic™ (IRO™) is a spherical lens designed with a spike-textured surface through which light rays are diffused outward and equally in all directions.

### LIGHT SOURCE

#### Static white

Compact COB (Chip-On-Board) LED module, available in 2200K, 2400K, 2700K, 3000K, 3500K, 4000K, and 5000K with a choice of 80+ CRI, 90+ CRI, or 95+ CRI, with an elevated R9 value for 90+ CRI and above. Color consistency is maintained to within 2 SDCM. All LEDs have been tested in accordance with IESNA LM-80-08 and the results have shown L80 lumen maintenance greater than 60,000 hours. Absolute product photometry is measured and presented in accordance with IESNA LM-79, unless otherwise indicated.

#### Full spectrum static white

The full spectrum LED option offers improved color particularly in the cyan region that is beneficial in both healthcare and circadian lighting strategies. The cyan region in full spectrum LED is richer at the 480 nm range.

#### Chromawerx SOLA

Chromawerx SOLA is single-channel control that dims output while warming the color temperature in a pre-determined relationship. Two color temperature range options are offered: 3000K to 1800K, and 2700K to 1800K. A simple analog control adjusts a specially populated LED array to emulate the effect of dimming a filament source.

#### Chromawerx DUO

Chromawerx DUO offers a two-channel control system which uses analog or digital protocols for synchronous control of both cool to warm LED arrays - maintaining a CRI above 90. Two color temperature range options are offered: 6500K to 2700K, and 5000K to 2700K. The range of color DUO offers is useful for entraining circadian rhythms, stimulating alertness, and compensating for jet lag among other applications. The Chromawerx drivers are programmed to limit maximum light output and power usage across all color temperatures. When paired with DALI drivers (DDA/DDA8), color tuning follows a linear dimming curve.

### ELECTRICAL

Unless otherwise specified, dimming down to 1%. At maximum driver load: efficiency>84%, PF>0.9, THD<20%. ELV and TRIAC dimming performance (including minimum dimming percentage) subject to dimmer selection.

**Canopy driver:** 1% 0-10V, ELV, TRIAC

**Remote driver:** 1% 0-10V, ELV, TRIAC, Lutron Hi-Lume 1% Eco, DALI, eldoLED 1% ECOdrive 0-10V, eldoLED 0.1% SOLOdrive 0-10V, DMX, Lutron DALI-2 digital

**Emergency battery option:** Remotely-installed, long-life, high-temperature, maintenance-free, Bodine Lithium-Ion battery pack with self-test functionality, test switch and charge indicator. IOTA and Fulham options available upon request. Minimum of 90 minutes operation, and recharge time of 24 hours. For fixtures less than 10 W, the battery provides 6 W of emergency light output. For fixtures 10 W and over, the battery provides 10 W.

### PoE

Depending on the PoE manufacturer selected, Lumenwerx will install the node in factory as either integral to the luminaire or as a remote module. Factory programming of the PoE node may or may not enable the following functionalities: lumen package, DUO (tunable white), QUADRO (RGBW), emergency battery backup, and sensor integration. These must be addressed and evaluated on a case-by-case basis.

### FINISH

Standard powder-coat paint available in matte white and black. Custom colors are also available.

### CONSTRUCTION

**Globe:** Frosted glass

**Canopy:** Flat and conduit feed

### WEIGHT

Ø 4": 1.10 lbs - 0.5 kg

Ø 6": 1.76 lbs - 0.8 kg

Ø 8": 2.65 lbs - 1.2 kg

Ø 12": 6.83 lbs - 3.1 kg

Ø 16": 11.90 lbs - 5.4 kg

### CERTIFICATION

**ETL:** Rated for indoor dry/damp locations. Conforms to UL Standard 1598 and certified to CAN/CSA Standard C22.2 No. 250.0.

### WARRANTY

Lumenwerx provides a five-year limited warranty on electrical and mechanical performance of the luminaires, including the LED boards, drivers, and auxiliary electronics. Lumenwerx will repair or replace defective luminaires or components at our discretion, provided they have been installed and operated in accordance with our specifications. Other limitations apply, please refer to the full warranty on our website.