

GLOBE

WALL



Globe is a fully illuminated sphere designed to deliver balanced illumination within architectural spaces. Crafted from high-quality frosted glass, its internal optic ensures smooth, even light distribution in all directions, providing visual comfort without glare or hotspots. Available in a range of diameters and mounting options, Globe can be used as an individual luminaire with strong visual presence or deployed in larger architectural arrangements.



Globe Brochure



Pivot Globe Module

Light Source

Static White

SOLA

DUO



Project: _____

Type: _____

Order Guide - Static White

For SOLA Dim-to-Warm and DUO Tunable White order guide, see page 3

LUMINAIRE ID	SIZE	OPTIC	LIGHT SOURCE	CRI
GLBW		IRO		
GLBW - Globe Wall	4IN - Ø 4" 6IN - Ø 6" 8IN - Ø 8"	IRO - Isotropic Radiant Optic	SW - Static white FS - Full spectrum static white	<u>Static white</u> 80CRI - 80+ CRI 90CRI - 90+ CRI 95CRI - 95+ CRI <u>Full spectrum</u> 95CRI - 95+ CRI

LUMEN PACKAGE	COLOR TEMPERATURE	VOLTAGE	DIMMING
Ø 4"	525LM - 525 lm	22K ¹ - 2200K 24K ² - 2400K 27K - 2700K 30K - 3000K 35K - 3500K 40K - 4000K 50K ² - 5000K	120V - 120V 277V - 277V UNV - 120V-277V 347V ³ - 347V
Ø 6"	800LM - 800 lm		CANOPY DRIVER D1 - 1% 0-10V ELV ⁴ - ELV 120V TRI ⁴ - TRIAC 120V
Ø 8"	1200LM - 1200 lm	³ Only available with RD1 driver. Please consult factory.	REMOTE DRIVER ⁵ RD1 - 1% 0-10V RELV ⁴ - ELV 120V RTRI ⁴ - TRIAC 120V RDA ⁶ - DALI RLDE1 ⁶ - Lutron Hi-lume 1% Eco RELD1 - eldoLED 1% ECOdrive 0-10V RELD0 - eldoLED 0.1% SOLOdrive 0-10V +EB ^{7,8} - Emergency battery

ELECTRICAL	CANOPY TYPE ⁹	CANOPY FINISH
1C	FLR	
1C - 1 circuit	FLR - Flat round canopy, 4" octagonal junction box ⁹ See page 4 for details.	FTMB - Matte black FTMW - Matte white CF# ¹⁰ - Custom finish, specify RAL# ¹⁰ See page 6 for more finish options.



Project: _____

Type: _____

Order Guide - SOLA Dim-to-Warm and DUO Tunable White

For static white order guide, see page 2

LUMINAIRE ID	SIZE	OPTIC	LIGHT SOURCE	CRI
GLBW		IRO		90CRI
GLBW - Globe Wall	4IN - Ø 4" 6IN - Ø 6" 8IN - Ø 8"	IRO - Isotropic Radiant Optic	SOLA - Dim-to-warm single channel control DUO - Tunable white 2-channel control	90CRI - 90+ CRI

LUMEN PACKAGE	COLOR TEMPERATURE	VOLTAGE	DIMMING
Ø 4" 215LM - 215 lm	<u>SOLA</u> 30K18K - 3000K to 1800K 27K18K - 2700K to 1800K	120V - 120V 277V - 277V UNV - 120V-277V	REMOTE DRIVER ¹ <u>SOLA</u> ² RSD1 - Single 0-10V input
Ø 6" 685LM - 685 lm	<u>DUO</u> 65K27K - 6500K to 2700K 50K27K - 5000K to 2700K		<u>DUO</u> RDMX ³ - DMX RDDA ³ - DALI DT6 RDDA8 ³ - DALI DT8 RDD1 - Dual 0-10V input for CCT/intensity RLD2 ³ - Lutron DALI-2 digital +EB ^{4,5} - Emergency battery
Ø 8" 800LM - 800 lm			

¹A remote driver box is provided.

²Consult factory for ELV/TRIAC.

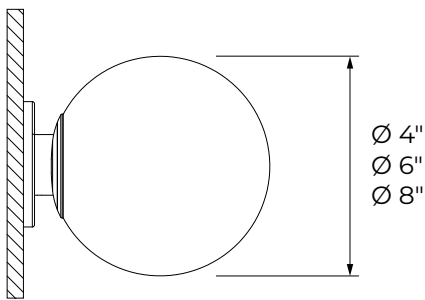
³On-site commissioning is required.

⁴To specify, add +EB to the selected dimming option, e.g. RDD1+EB.

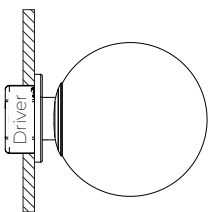
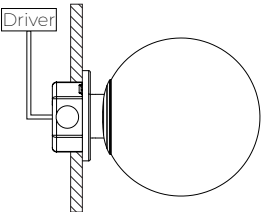
⁵Not available with Ø 4".

ELECTRICAL	CANOPY TYPE ⁶	CANOPY FINISH
1C	FLR	
1C - 1 circuit	FLR - Flat round canopy, 4" octagonal junction box ⁶ See page 4 for details.	FTMB - Matte black FTMW - Matte white CF# ⁷ - Custom finish, specify RAL# ⁷ See page 6 for more finish options.

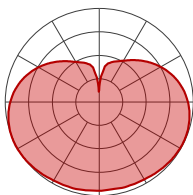
Dimensions



Mounting

CANOPY DRIVER		REMOTE DRIVER
Order code	FLR Flat round canopy, 4" octagonal junction box	FLR Flat round canopy, 4" octagonal junction box
Canopy type		
Canopy size	Ø 4 1/2" Height 3/8"	Ø 4 1/2" Height 3/8"

Photometrics



Static white
Values calculated based on 3500K.

SIZE	LM	W	LM/W
Ø 4"	525	10	53
Ø 6"	800	12	67
Ø 8"	1200	14	86

MULTIPLIERS
Use this table to get results for
different color temperatures.

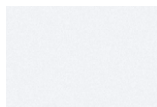
CCT	
2200K	0.80
2400K	0.87
2700K	0.94
3000K	0.98
3500K	1
4000K	1.05
5000K	1.05

SOLA / DUO
Values calculated at high end CCT.

SIZE	LM	W	LM/W
Ø 4"	215	8	27
Ø 6"	685	14	49
Ø 8"	800	14	57

Finishes

Standard



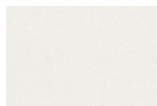
FTMW - Matte White



FTMB - Matte Black

Custom

Neutrals



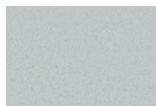
CRM - Cream



GRY - Gray



STG - Steel Gray

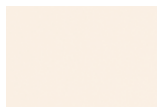


SAG - Sage Gray



BLB - Black Blue

Designer



ALM - Almond



RST - Rust Fine
Texture



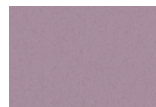
GRB - Green Beige



YLW - Yellow



SLM - Salmon Pink



VIO - Pastel Violet



RED - Red



PRR - Purple Red



SMB - Storm Blue



DPB - Deep Blue



OCB - Ocean Blue



BLG - Blue Green



GNS - Green Smoke

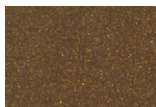


MNG - Mint Green

Metallics



CHP - Champagne



DBZ - Dark Bronze



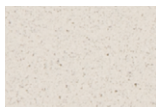
CNY - Canyon

Premium Custom

Neutrals



MOG - Moss Gray



QRZ - Quartzite
Texture



LMG - Lime Green



GLD - Gold



IRN - Iron Ore



SBP - Sandblast
Copper



SWD - Sandalwood

Some colors may have longer lead time.

Technical Specifications

OPTIC

Isotropic Radiant Optic™ (IRO™)

The Isotropic Radiant Optic™ (IRO™) is a spherical lens designed with a spike-textured surface through which light rays are diffused outward and equally in all directions.

LIGHT SOURCE

Static white

Compact COB (Chip-On-Board) LED module, available in 2200K, 2400K, 2700K, 3000K, 3500K, 4000K, and 5000K with a choice of 80+ CRI, 90+ CRI, or 95+ CRI, with an elevated R9 value for 90+ CRI and above. Color consistency is maintained to within 2 SDCM. All LEDs have been tested in accordance with IESNA LM-80-08 and the results have shown L80 lumen maintenance greater than 60,000 hours. Absolute product photometry is measured and presented in accordance with IESNA LM-79, unless otherwise indicated.

Full spectrum static white

The full spectrum LED option offers improved color particularly in the cyan region that is beneficial in both healthcare and circadian lighting strategies. The cyan region in full spectrum LED is richer at the 480 nm range.

Chromawerx SOLA

Chromawerx SOLA is single-channel control that dims output while warming the color temperature in a pre-determined relationship. Two color temperature range options are offered: 3000K to 1800K, and 2700K to 1800K. A simple analog control adjusts a specially populated LED array to emulate the effect of dimming a filament source.

Chromawerx DUO

Chromawerx DUO offers a two-channel control system which uses analog or digital protocols for synchronous control of both cool to warm LED arrays - maintaining a CRI above 90. Two color temperature range options are offered: 6500K to 2700K, and 5000K to 2700K. The range of color DUO offers is useful for entraining circadian rhythms, stimulating alertness, and compensating for jet lag among other applications. The Chromawerx drivers are programmed to limit maximum light output and power usage across all color temperatures. When paired with DALI drivers (DDA/DDA8), color tuning follows a linear dimming curve.

ELECTRICAL

Unless otherwise specified, dimming down to 1%. At maximum driver load: efficiency > 84%, PF > 0.9, THD < 20%. ELV and TRIAC dimming performance (including minimum dimming percentage) subject to dimmer selection.

Canopy driver: 1% 0-10V, ELV, TRIAC

Remote driver: 1% 0-10V, ELV, TRIAC, DALI, Lutron Hi-Lume 1% Eco, eldoLED 1% ECOdrive 0-10V, eldoLED 0.1% SOLOdrive 0-10V, DMX, Lutron DALI-2 digital

Emergency battery option: Remotely-installed, long-life, high-temperature, maintenance-free, Bodine Lithium-Ion battery pack with self-test functionality, test switch and charge indicator. IOTA and Fulham options available upon request. Minimum of 90 minutes operation, and recharge time of 24 hours. For fixtures less than 10 W, the battery provides 6 W of emergency light output. For fixtures 10 W and over, the battery provides 10 W.

PoE

Depending on the PoE manufacturer selected, Lumenwerx will install the node in factory as either integral to the luminaire or as a remote module. Factory programming of the PoE node may or may not enable the following functionalities: lumen package, DUO (tunable white), QUADRO (RGBW), emergency battery backup, and sensor integration. These must be addressed and evaluated on a case-by-case basis.

FINISH

Standard powder-coat paint available in matte white and black. Custom colors are also available.

CONSTRUCTION

Globe: Frosted glass

Canopy: Flat

WEIGHT

Ø 4": 1.10 lbs - 0.5 kg

Ø 6": 1.76 lbs - 0.8 kg

Ø 8": 2.65 lbs - 1.2 kg

CERTIFICATION

ETL: Rated for indoor dry/damp locations. Conforms to UL Standard 1598 and certified to CAN/CSA Standard C22.2 No. 250.0.

WARRANTY

Lumenwerx provides a five-year limited warranty on electrical and mechanical performance of the luminaires, including the LED boards, drivers, and auxiliary electronics. Lumenwerx will repair or replace defective luminaires or components at our discretion, provided they have been installed and operated in accordance with our specifications. Other limitations apply, please refer to the full warranty on our website.