

STEPLIGHT

WALL - OVAL
SEAL SEMI-RECESSED



Project: _____

Type: _____



- Oval horizontal and vertical faceplates
- Multiple LED choices
- 90-degree cut-off obstructs light trespass
- Polycarbonate lens
- Shallow housing comply with ADA requirements
- 1.5W Output wattage

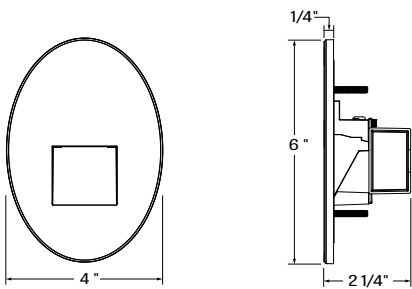


Order Guide

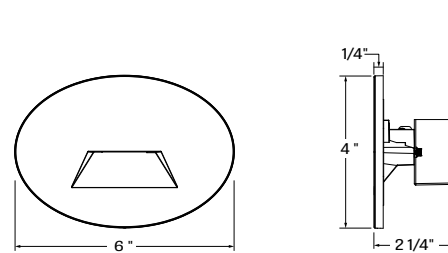
LUMINAIRE ID	FACEPLATE ORIENTATION	COLOR TEMP.	VOLTAGE	FINISH	OPTION
STPL					
STPL - Healthwerx Steplight	OV - Oval vertical OH - Oval horizontal	27K - 2700K 30K - 3000K 35K - 3500K 40K - 4000K AMB - Amber light BLU - Blue light	120V - 120V 277V - 277V UNV - 120V-277V	WA - White antimicrobial Silverwerx W - Matte white I - Ivory CF# - Custom finish, specify RAL#	PHC - Photocell sensor NA - None

DIMENSIONS

Oval vertical

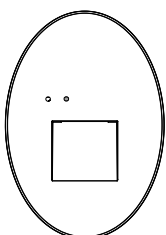


Oval horizontal



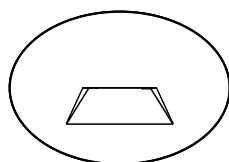
OPTION

Photocell sensor



Oval vertical

Sensor information



Oval horizontal

SENSORS
For latest information on sensors, click [here](#).