



Hemi

Task. Aim. Ambient. Combine.

LUMENWERX



Hemi luminaires poised to enhance the ambiance of a restaurant/piano bar.

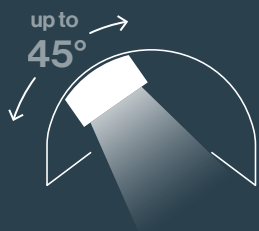
Mixing **Hemi L** with a 3" adjustable module & 2-2" adjustable modules with soft ambient in a black trim

Meet Hemi

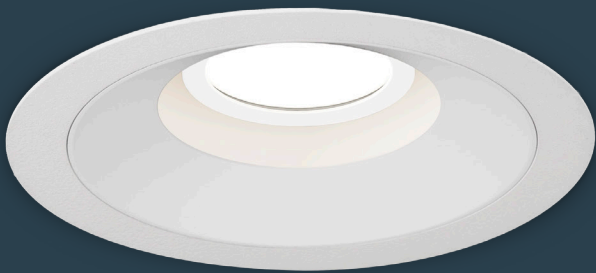
Task. Aim. Ambient.
Combine.

Flexible in function and dynamic in design, Hemi is a line of hemisphere-shaped luminaires that proposes a new standard of offerings to the lighting industry. With rotational capabilities reaching 355 degrees, a tilt of up to 45 degrees from vertical, and aiming that is magnetically held in place, Hemi fixtures provide a vast range of precisely positioned solutions for both task and ambient requirements.

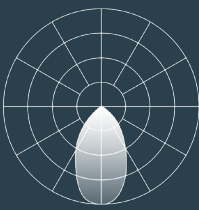
- **2 sizes:**
Small (4”) & Large (6.25”)
- Static White, Sola, Duo, Trio, and Full Spectrum
- Multifunctional Downlight
- Field-Adjustable Optics



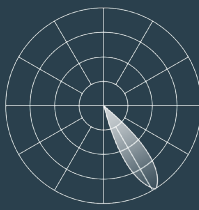
Hemi S



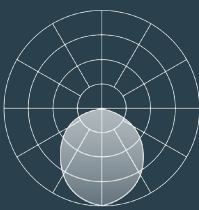
Hemi L



Task



Aim



Ambient



Combine



Featuring **Hemi L** with a 3" adjustable module and soft ambient in white.

Configurations & Independent Control

Hemi was cleverly designed to accommodate one or two adjustable modules per luminaire and a soft ambient option. This allows for numerous mixing and matching configurations. The fixtures can be controlled as one collective unit or as independent separate circuits.

Hemi S – 4”

Single 2” module



2” Module



Soft Ambient



2” Module
+ Soft Ambient

Soft Ambient



Soft Ambient

Hemi L – 6.25”

Single 3” module



3” Module



Soft Ambient



3” Module
+ Soft Ambient

Single 2” module



2” Module



Soft Ambient



2” Module
+ Soft Ambient

Double 2” module



2” Modules



2” Modules



2” Modules



2” Modules
+ Soft Ambient



2” Modules
+ Soft Ambient



2” Module
+ Soft Ambient



Soft Ambient



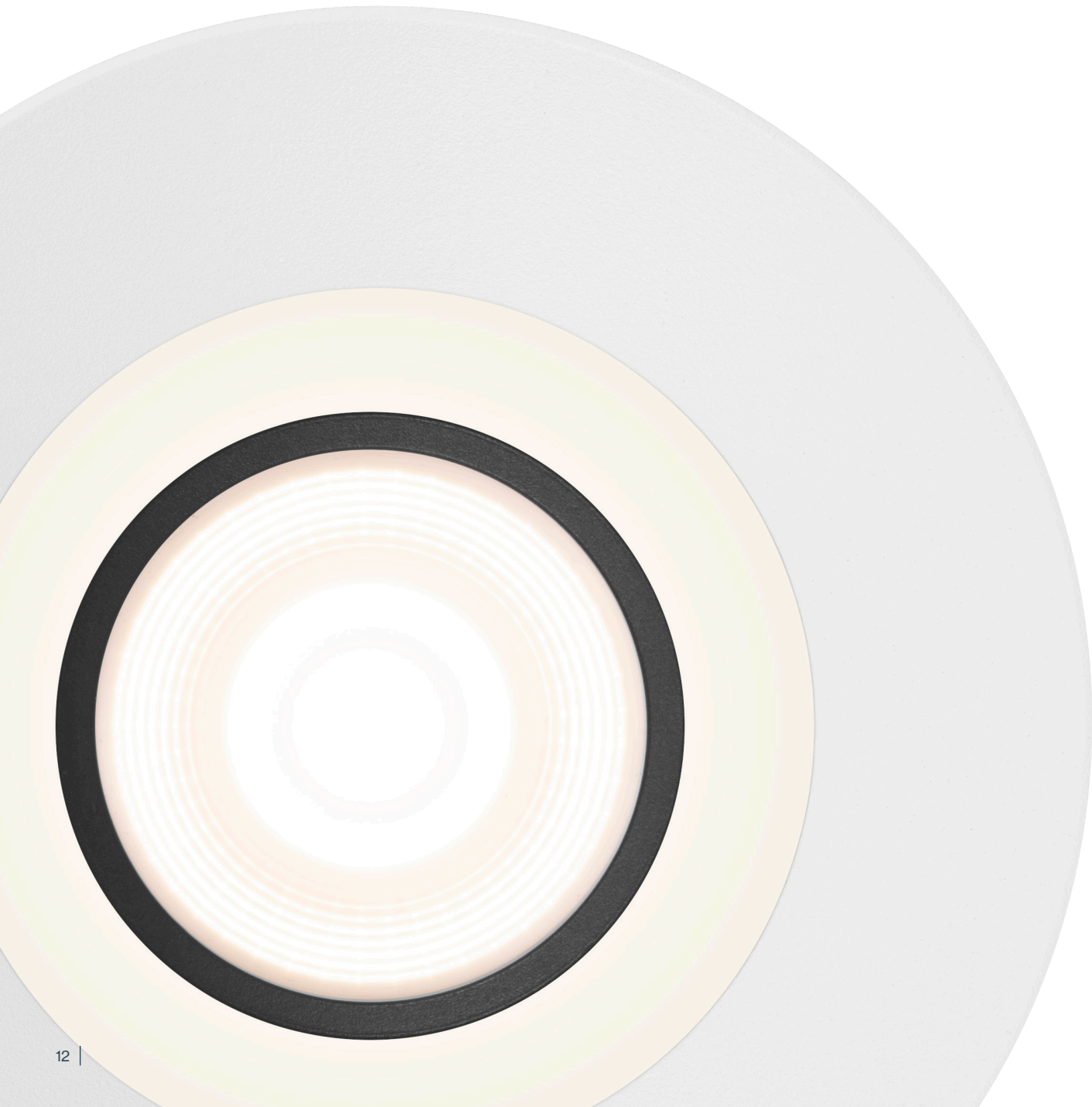
Soft Ambient



Layering light sets a tone and showcases goods.

Mixing **Hemi L** with a 3" adjustable module & 2-2" adjustable modules with soft ambient in white

Hyflex™ Optics Adjustable Module



Field-Adjustable
Beam

Low UGR
for all beams

5 Beam Angles

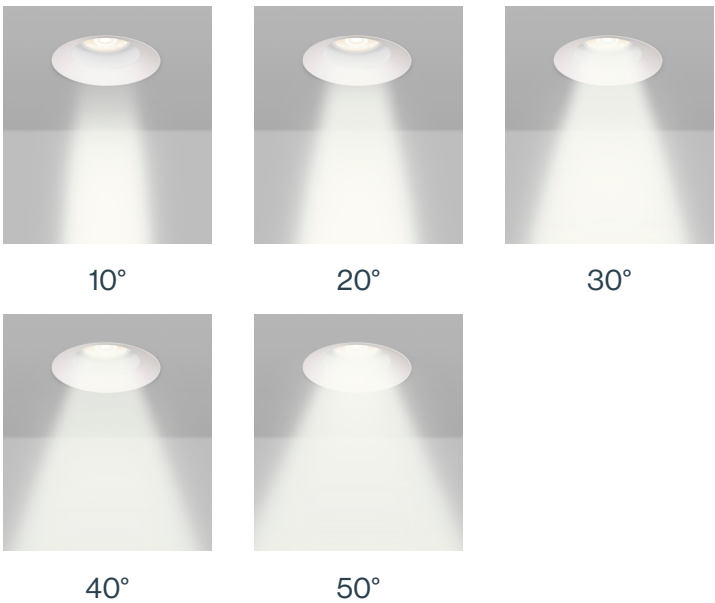
PCF Technology

Hyflex™ optics provide precise optical control in a remarkably compact form. The core of this four-tier system is a compound reflector with a central TIR element, just 1.06” deep. Beam smoothing discs perfect beam angles up to 50°, and beam angles are easily adjustable in the field.

The Hyflex™ system utilizes proprietary PCF™ (Passive Cooling Fusion) technology that combines efficiency with elegance in a sophisticated three-tier cooling system.

The Hyflex™ optics are firmly secured with high-temperature rare-earth magnets.

Beam angles



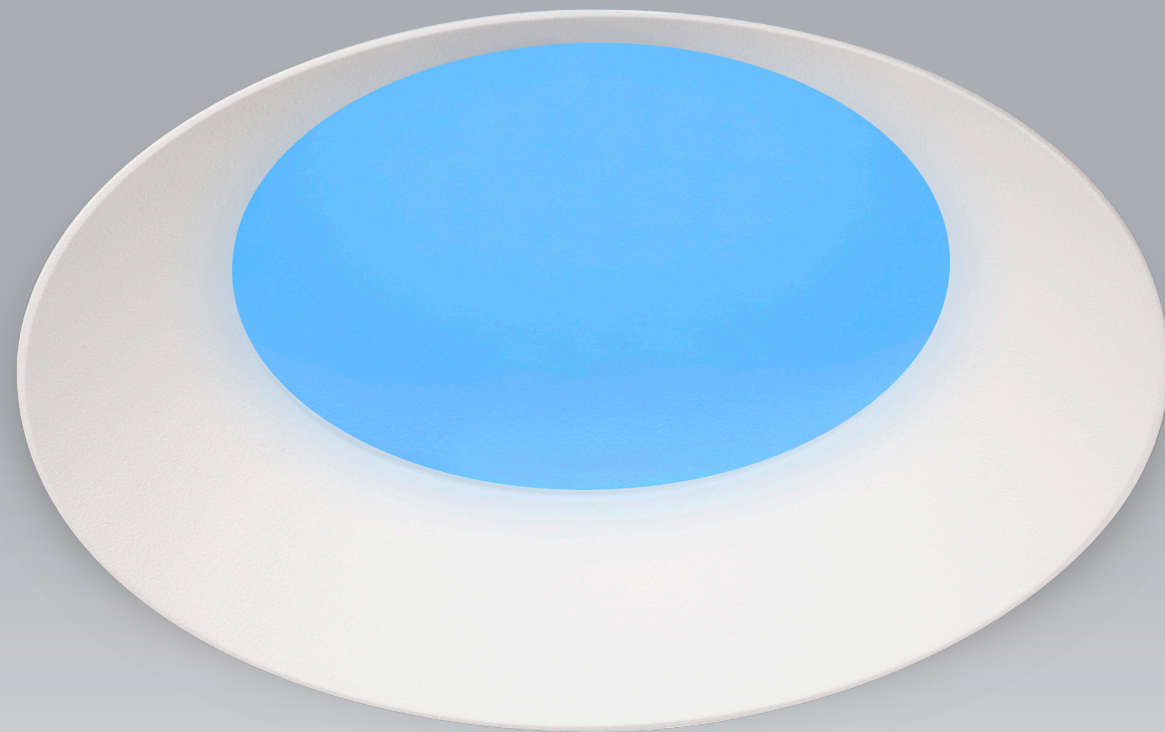


Use **Hemi** to emphasize pathways within a multipurpose setting.

Hemi L is used with soft ambient and a 2" adjustable module, in white.

Soft Ambient

Without the use of adjustable modules, Hemi fixtures can provide illumination through an uplight array that delivers a soft ambient whisper of light that can work well in hospitality locales, for example, and in company reception areas where light and color are used as primary materials of brand or corporate expressions. The array can be controlled separately or in conjunction with accompanying lighting modules. White light tuning is possible through our Sola or Duo technologies, while color play can be achieved with our Trio technology.



- Static White, Sola, Duo, Trio
- Offered in Small & Large
- Independent or simultaneous control



Hemi S is used with an adjustable module and soft ambient in white

Versatility

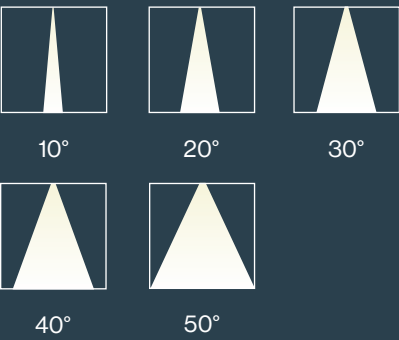
Trims



Color temperatures



Adjustable module beam angles



Color rendering options

80+ 90+ and 95

Fixture size



Standard finishes



Flexibility on the fly.



Mounting Options

Hemi recessed downlights are available in five mounting options: Open Frame, Insulated Ceiling, Chicago Plenum, Millwork, and Remodel. For confined plenum spaces, Hemi is a great solution with its low profile and standard offerings available in depths less than 4". Four mounting bars along with standard bar hangers, commercial bar hangers, flush mount bars, and hat channel bars are all adjustable for a variety of applications.

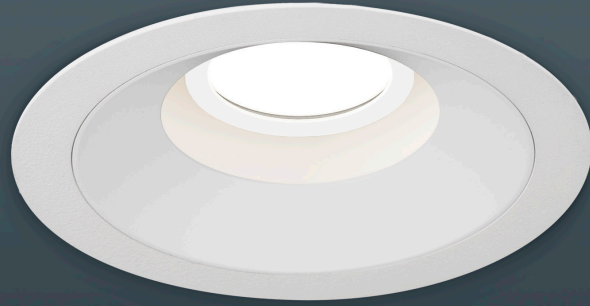
< 4 inches in depth

5 mounting options

- Open Frame
 - Insulated Ceiling
 - Chicago Plenum
 - Millwork
 - Remodel
-

4 adjustable mounting bars

Hemi S installed in millwork with a black baffle



Hemi

Task. Aim. Ambient. Combine.