

Cluster Pi

CONCENTRIC DESIGN FOR INSPIRED SPACES





Introducing Cluster Pi



APERTURE SIZE

3.5", 6.5", 9"
(Small, Medium, Large)

OPTICS

KVCO™,
MRO, HLO

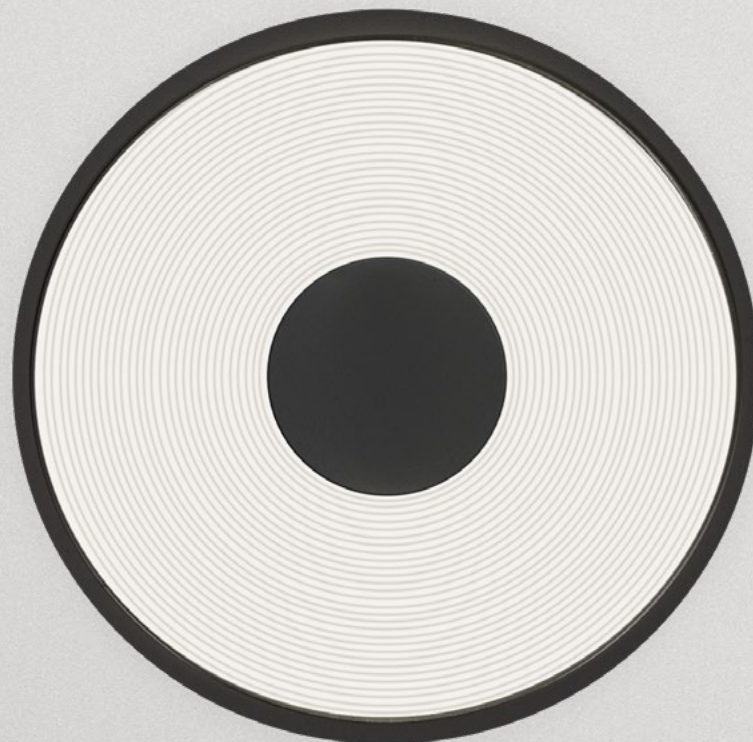
MOUNTING OPTIONS

Recessed,
Surface, Pendant

PROFILE

Low profile
< 2" in all profiles

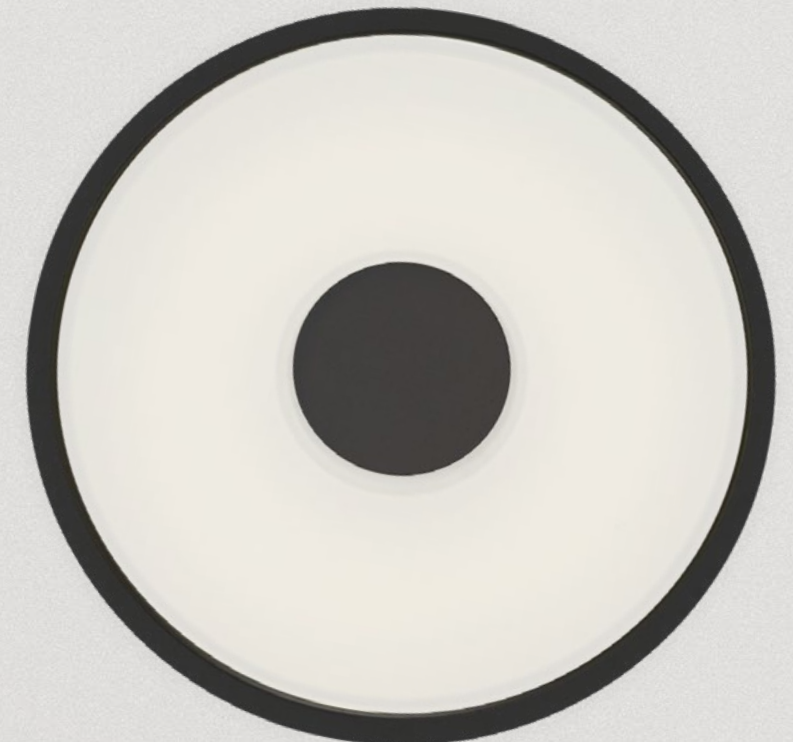
CLUSTER PI
KVCO™



CLUSTER PI
MRO



CLUSTER PI
HLO





Circling the Square

Say hi to Pi, the latest addition to our sought-after Cluster product line. Named after the mathematical constant we all know, Pi maintains Cluster's characteristic quality and mid-century modernist vibe, while embodying softer, circular forms finely crafted to allow for a secondary luminaire to be housed at its center.

Typically, Cluster designs are based on fundamental 1.2-square-inch light cells used in linear and cuboid arrays. For Pi, however, the size and shape of the original cells have been tweaked to fit perfectly into a ringed array that runs the circumference of the fixture.

With Cluster Pi, the creative reach of the entire Cluster collection extends into a new realm with a more rounded offering that can run circles around its former self.



Cluster Pi MRO 3.5" surface;
Cluster Pi MRO 3.5" pendant



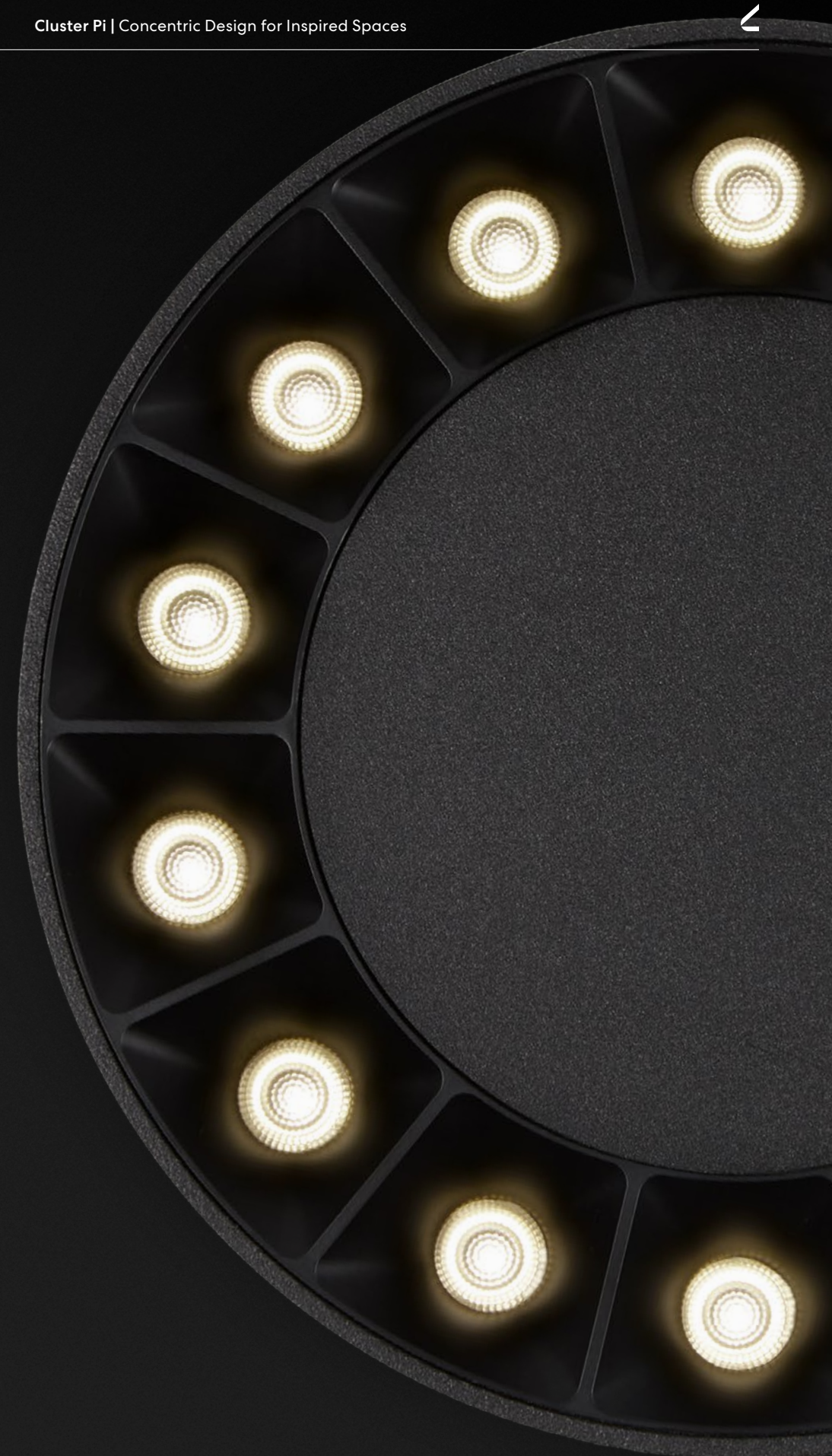
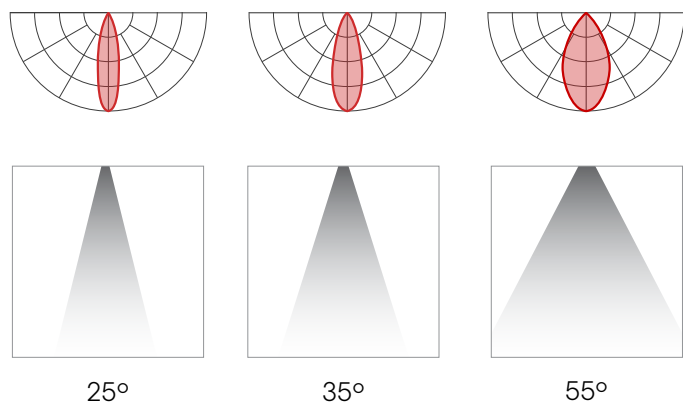
Surface and pendant mounted
luminaires **anchor the space**
with **visual rhythm**.



Cluster Pi with Miniature Reflector Optic (MRO)

Cluster Pi fixtures with the Miniature Reflector Optic (MRO) are equipped with precisely molded Total Internal Reflection (TIR) elements that have been placed over each LED emitter in the fixture's circular array with parabolic reflectors providing further shielding of the light source. As a result, delivered beams are remarkably comfortable and offer a gentle, blended transition of light to darkness.

BEAM SPREADS

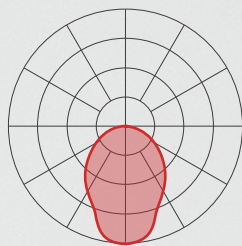




Cluster Pi MRO 6.5" recessed with Hemi add-on;
Pivot recessed with Cluster module



Cluster Pi's arrays **complement**
with ease the design aesthetic
of **mid-century** modernism.



Cluster Pi with Kinetic Visual Comfort Optic™ (KVCO™)

Cluster Pi with KVCO™ relies on the optic's finely crafted series of concentric grooves to serve as light-bending prisms redirecting parallel rays to a common focal length, delivering beams that are precise and clean. The optic can change in appearance depending on the lighting conditions in its immediate surroundings.



Cluster Pi KVCO™ 6.5" recessed



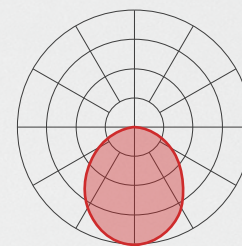
Varying textures, forms,
and sizes **work in harmony**
under the same light.



Cluster Pi with High- Efficiency Lambertian Optic (HLO)

Our most popular optic, the High-Efficiency Lambertian Optic (HLO), is engineered with reflective sidewalls that distribute LED output across acrylic shielding. Cluster Pi with HLO delivers soft, diffused beams.

To negotiate the curves of Lumenwerx rounded fixtures, the HLO is equipped with proprietary SupremeGrip™ technology, which keeps the optic securely in place.

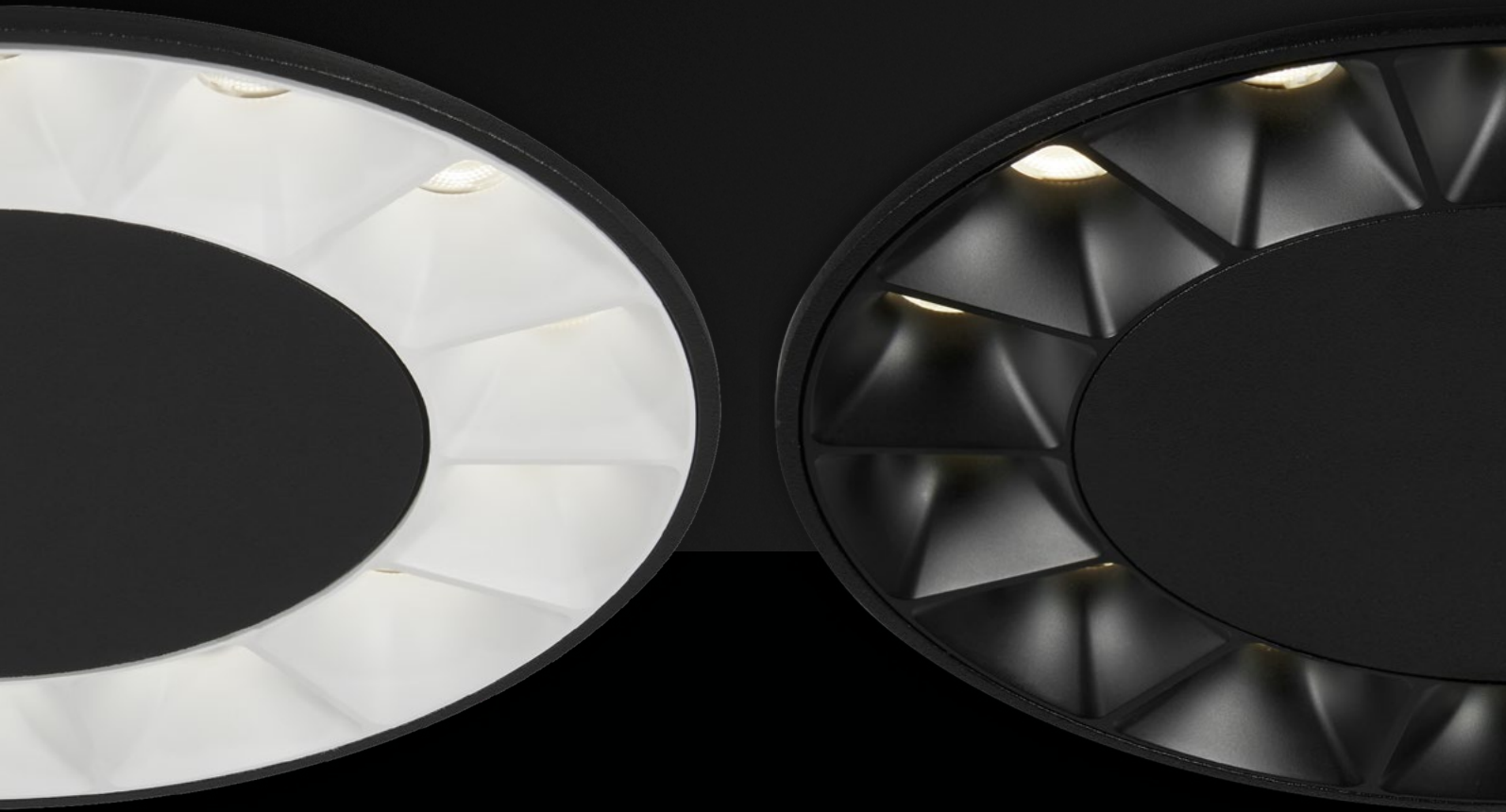




Cluster Pi HLO 9" recessed



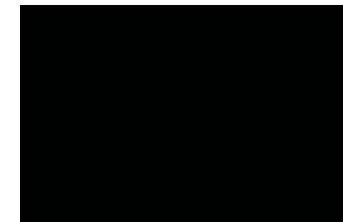
Lighting placement enhances pathways and sight lines, **creating a dynamic spatial experience.**



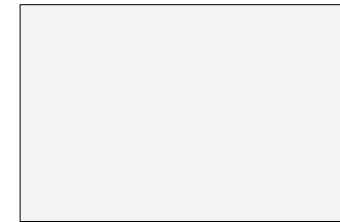
Finishes

Cluster Pi Optics are available in Matte Black, Matte White, and Matte Silver, while extrusion finish options are Textured Matte Black, Textured Matte White, and Custom RAL.

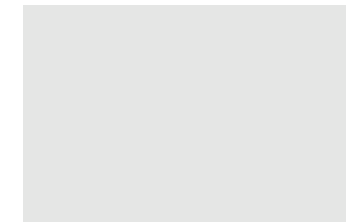
OPTIC FINISHES



Matte Black

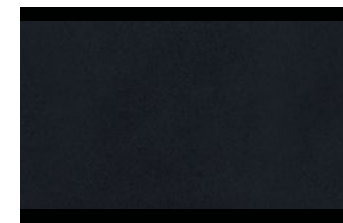


Matte White

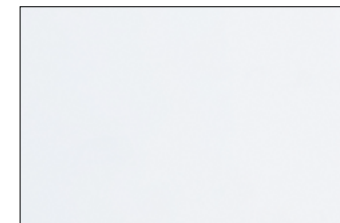


Matte Silver

EXTRUSION FINISHES



Textured Matte Black



Textured Matte White



Custom RAL



Mountings



Cluster Pi luminaires can be recessed, surface, or pendant mounted, with each option displaying Cluster Pi's distinct qualities.



RECESSED

Recessed fixtures accommodate add-ons while still maintaining a low profile extending into the ceiling.



SURFACE

Cluster Pi surface fixtures occupy a clean, precise presence with mounting hidden.



PENDANT

Suspended by a power cord or stem, Cluster Pi pendants have a timeless geometric aesthetic that makes them suitable for any indoor space.

Cluster Pi MRO 3.5" recessed;
Cluster Pi MRO 3.5" pendant

Recessed luminaires **set the mood**,
while pendants rest poised
to illuminate the tasks to come.

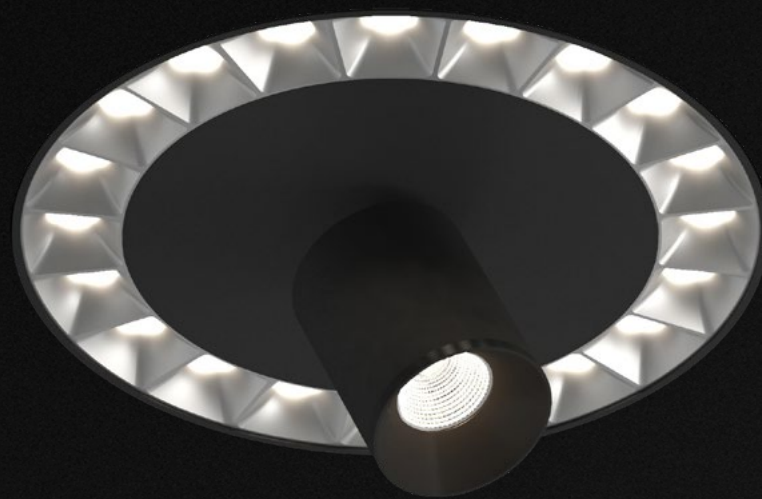


Add-ons

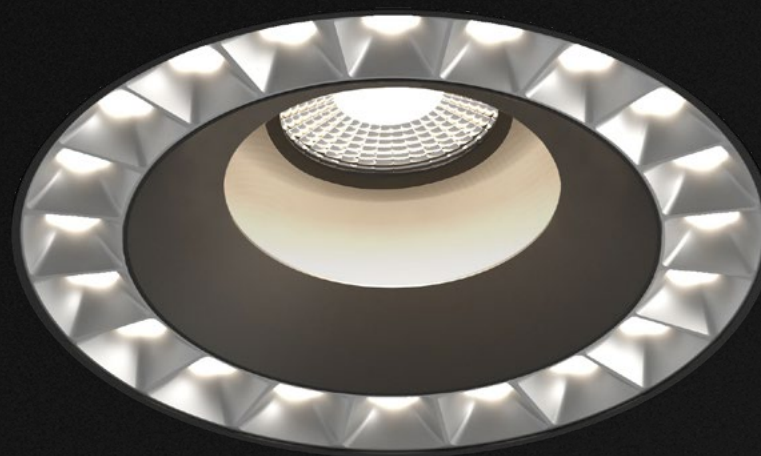


Within Cluster Pi Medium and Large fixtures with MRO lies the space to house an additional luminaire from the Lumenwerx offering.

This attribute is particularly beneficial for layering two types of lighting (e.g. ambient and task) within the same luminaire or series of luminaires



CLUSTER PI MRO 9"
WITH DOT 2" ADD-ON



CLUSTER PI MRO 9" WITH
HEMI L ADD-ON



CLUSTER PI MRO 9" WITH
DOT CYLINDER 1" ADD-ON

Cluster Pi MRO 9" recessed with Dot 2" add-on;
Cluster Pi MRO 9" recessed with Hemi add-on

Within the same luminaire, Cluster Pi **illuminates the path**, while add-on Dot lights the products.



Cluster Pi

Overview

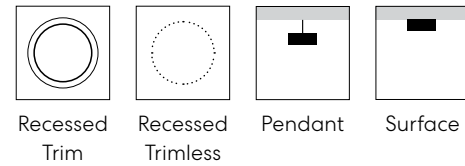
APERTURE SIZE

3.5", 6.5", 9"

OPTICS

MRO, KVCO™, HLO

MOUNTING OPTIONS



COLOR TEMPERATURES

- 2700K
- 3000K
- 3500K
- 4000K

MRO LOUVER FINISHES

- Matte White
- Matte Black
- Matte Silver

REVEAL FINISHES (for pendant, surface)

- Textured Matte White
- Textured Matte Black
- Custom RAL

MEDIUM MRO ADD-ONS(for recessed MRO only)

Hemi S	Ecana 4"	Dot Cylinders
2" Module Soft Ambient		1.5" Cylinder 2" Cylinder

LARGE MRO ADD-ONS(for recessed MRO only)

Hemi L	Dot	Dot Cylinders
1x2" Module 1x3" Module Soft Ambient	1.5" Dot 2" Dot	1.5" Cylinder 2" Cylinder





Cluster Pi MRO 9° recessed



Cluster Pi provides an atmosphere of **visual comfort** in learning environments.



Cluster Collection

Complementing Products

The Cluster modular system is composed of identical 1.2" light cells that combine to form compact linear, cuboid, and circular luminaires. Designed for recessed, pendant, and surface-mounted applications, the system offers flexibility across a range of configurations. Each cell contains a single LED emitter and supports a choice of soft- or sharp-edge lenses, multiple beam spreads, and refined aperture treatments, delivering controlled illumination with excellent cut-off and a Unified Glare Rating (UGR) of 10.

Stylistically, the system draws on mid-20th century design, expressed through sleek geometric motifs and symbols derived from atomic and aerospace imagery.

Linear, Cuboids,
Downlights, and
Combinations

Recessed,
Surface, Pendant

Parabolic, Soft-Edge,
Sharp-Edge, Wall Wash,
and Combinations





CLUSTER PI
BROCHURE



CLUSTER PI
ONLINE

 **Lumenwerx**

ALWAYS LIGHT
RIGHT

lumenwerx.com
R.05.2026