

MINEAR RING

DIRECT/INDIRECT, DIRECT
PENDANT



From the Minear Collection of miniature, made-to-order luminaires, the Minear Ring features a 1/2" aperture and diameters ranging from 18" to 72", offering a circular expression that complements its linear counterparts. Minear Ring is available as a pendant-mounted fixture suitable for both standalone installations and grouped compositions.

SENSORS
For latest
information
on sensors,
click [here](#).



Minear Brochure



MINEAR RING

DIRECT/INDIRECT, DIRECT
PENDANT



Project: _____
Type: _____

Order Guide

LUMINAIRE ID	DISTRIBUTION	SIZE	DIRECT OPTIC	INDIRECT OPTIC Specify NA for Direct fixture
MINRIP			BLO	
MINRIP - Minear Ring Pendant	DI - Direct/Indirect D - Direct	18IN - Ø 18" 24IN - Ø 24" 36IN - Ø 36" 48IN - Ø 48" 60IN - Ø 60" 72IN - Ø 72"	BLO - Balanced Lambertian Optic	BLO - Balanced Lambertian Optic NA - Not applicable

LIGHT SOURCE		CRI		LUMEN PACKAGE				COLOR TEMPERATURE	
SW		90CRI							
SW - Static white	90CRI - 90+ CRI	DIRECT		DIRECT/INDIRECT			27K - 2700K 30K - 3000K 35K - 3500K 40K - 4000K		
		Low	High	Low	High				
		Ø 18"	450LM	750LM	Ø 18"	900LM		1500LM	
		Ø 24"	600LM	1000LM	Ø 24"	1200LM		2000LM	
		Ø 36"	900LM	1500LM	Ø 36"	1800LM		3000LM ¹	
		Ø 48"	1200LM	2000LM	Ø 48"	2400LM		4000LM ¹	
		Ø 60"	1500LM	2500LM ¹	Ø 60"	3000LM ¹		5000LM ¹	
		Ø 72"	1800LM	3000LM ¹	Ø 72"	3600LM ¹		6000LM ¹	
		¹ Available with remote driver only.							

¹Available with remote driver only.

VOLTAGE	DRIVER		ELECTRICAL ⁴
			1C
120V - 120V 277V - 277V UNV - 120V-277V 347V ² - 347V	CANOPY DRIVER D1 - 1% 0-10V DA ³ - DALI LDE1 ³ - Lutron Hi-Lume 1% Eco ELD1 - eldoLED 1% ECOdrive 0-10V ELDO - eldoLED 0.1% SOLOdrive 0-10V	REMOTE DRIVER RD1 - 1% 0-10V RDA ³ - DALI RLDE1 ³ - Lutron Hi-Lume 1% Eco RELD1 - eldoLED 1% ECOdrive 0-10V RELD0 - eldoLED 0.1% SOLOdrive 0-10V	1C - 1 circuit ⁴ For other circuit configurations, consult factory.

²Available with RD1 driver only.

³On-site commissioning is required.

MOUNTING					FINISH ¹⁰
DRIVER BOX ⁵ RCD - Round canopy driver box RDB - Remote driver box ⁵ For more information see page 3.	CANOPY FINISH FTMW - Matte white FTMB - Matte black AL - Aluminum CF# - Custom finish, specify RAL#	POWER POC - Power-over-aircraft cable	MOUNTING POINTS SC ⁶ - Single canopy MC ^{6,7,8} - Multiple canopies ⁶ See page 4 for more details. ⁷ For fixtures up to Ø 48", a total of three canopies are provided. Four canopies are supplied for Ø 60" and larger fixtures. ⁸ With the RCD option, the type of each canopy may differ based on the selected lumen package and driver options. Consult factory for details.	MOUNTING CABLE LENGTH ⁹ 18IN - 18" 24IN - 24" 36IN - 36" 48IN - 48" ⁹ For single canopy option, the minimum required mounting heights are (distance from ceiling to top of fixture in inches):	FTMW - Matte white FTMB - Matte black AL - Aluminum CF# - Custom finish, specify RAL# ¹⁰ See page 5 for more finish options.W

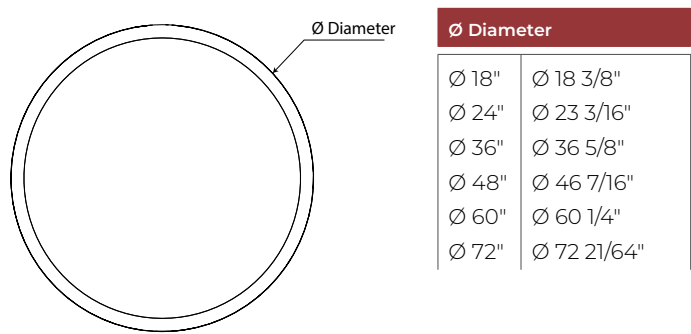
Fixture size	Minimum height
Ø 18"	11"
Ø 24"	15"
Ø 36"	22"
Ø 48"	29"
Ø 60"	36"
Ø 72"	43"

MINEAR RING

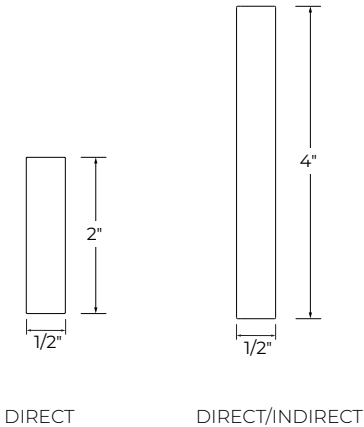
DIRECT/INDIRECT, DIRECT
PENDANT



Dimensions



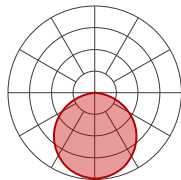
Section View



Photometrics

Direct

Delivered lumens at 4000K at 90+ CRI.



	LOW			HIGH		
SIZE	LM	WATTS	LM/W	LM	WATTS	LM/W
Ø 18"	450	15.0	30	750	27.8	27
Ø 24"	600	20.0	30	1000	37.0	27
Ø 36"	900	30.0	30	1500	55.6	27
Ø 48"	1200	40.0	30	2000	74.1	27
Ø 60"	1500	50.0	30	2500	92.6	27
Ø 72"	1800	60.0	30	3000	111.1	27

CCT	WATTS	LPW
2700K	1.08	0.92
3000K	1.05	0.96
3500K	1.02	0.98
4000K	1.00	1.00

MINEAR RING

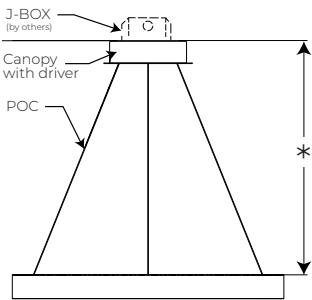
DIRECT/INDIRECT, DIRECT
PENDANT



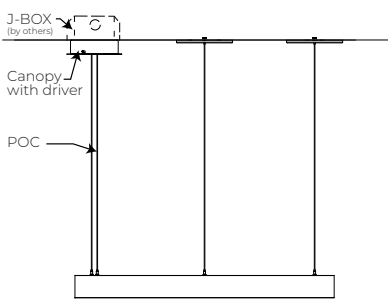
Mounting Options

RCD - Round Canopy Driver Box

SC - SINGLE CANOPY	MC - MULTIPLE CANOPIES
--------------------	------------------------



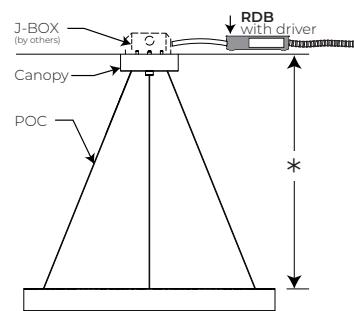
POC - Power-over-aircraft cable



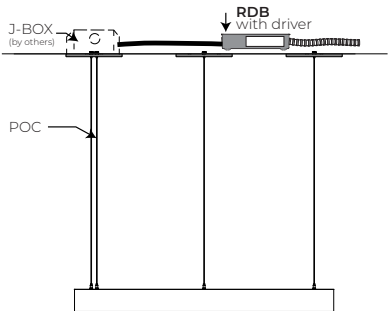
POC - Power-over-aircraft cable

RDB - Remote Driver Box

SC - SINGLE CANOPY	MC - MULTIPLE CANOPIES
--------------------	------------------------



POC - Power-over-aircraft cable



POC - Power-over-aircraft cable

For single canopy option, the minimum required mounting heights:

Fixture size * Minimum height

Ø 18"	11"
Ø 24"	15"
Ø 36"	22"
Ø 48"	29"
Ø 60"	36"
Ø 72"	43"

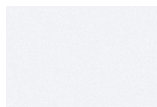
MINEAR RING

DIRECT/INDIRECT, DIRECT
PENDANT



Fixture Finishes

Standard



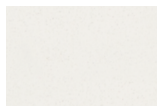
FTMW - Matte White



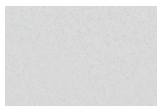
FTMB - Matte Black

Custom

Neutrals



CRM - Cream



GRY - Gray



STG - Steel Gray

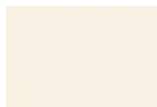


SAG - Sage Gray

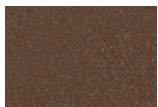


BLB - Black Blue

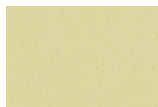
Designer



ALM - Almond



RST - Rust Fine
Texture



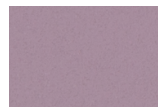
GRB - Green Beige



YLW - Yellow



SLM - Salmon Pink



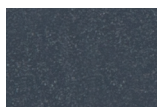
VIO - Pastel Violet



RED - Red



PRR - Purple Red



SMB - Storm Blue



DPB - Deep Blue



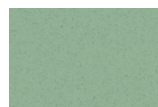
OCB - Ocean Blue



BLG - Blue Green

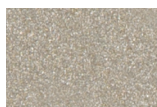


GNS - Green Smoke

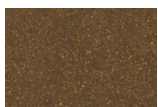


MNG - Mint Green

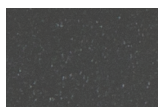
Metallics



CHP - Champagne



DBZ - Dark Bronze



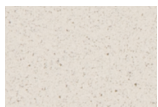
CNY - Canyon

Premium Custom

Neutrals



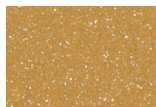
MOG - Moss Gray



QRZ - Quartzite
Texture



LMG - Lime Green



GLD - Gold



IRN - Iron Ore



SBP - Sandblast
Copper



SWD - Sandalwood

MINEAR RING

DIRECT/INDIRECT, DIRECT
PENDANT



Technical Specifications

OPTIC

Balanced Lambertian Optic (BLO)

The Balanced Lambertian Optic (BLO), made from high-quality satin-diffuse acrylic, uses a micro-textured surface to produce soft, uniform distribution with a glare-controlled falloff and a wide 110° beam, ensuring consistent illumination and visual comfort.

LIGHT SOURCE

Custom array of mid-flux LEDs are mounted directly to the housing for optimal thermal performance. Available in 2700K, 3000K, 3500K and 4000K with 90+ CRI and elevated R9 value. Color consistency maintained to within 3 SDCM. LEDs operate at reduced drive current to optimize efficacy and lumen maintenance.

All LEDs have been tested in accordance with IESNA LM-80-08 and the results have shown L80 lumen maintenance greater than 60,000 hours. Absolute product photometry is measured and presented in accordance with IESNA LM-79, unless otherwise indicated.

ELECTRICAL

Factory-set, adjustable output current LED driver with universal (120-277VAC) input. Dimmable from 100% to 1% with 0-10V dimming control. Rated life (90% survivorship) of 50,000 hours at 50°C max. ambient (and 70°C max. case) temperature. At maximum driver load: Efficiency > 84%, PF > 0.9, THD < 20%. Other specifiable options include Lutron Hi-Lume 1% Eco, eldoLED 1% ECODrive 0-10V, eldoLED 0.1% SOLOdrive 0-10V, and DALI protocol drivers. All of our standard 0-10V drivers are NEMA 410 compliant.

PoE

Depending on the PoE manufacturer selected, Lumenwerx will install the node in factory as either integral to the luminaire or as a remote module. These must be addressed and evaluated on a case-by-case basis.

FINISH

Interior: 95% reflective, matte white powder coated white paint

Exterior: Matte white, matte black or aluminum powder coating. Custom finishes are also available.

CONSTRUCTION

Housing: Rolled and seamlessly welded aluminum extrusion

Canopy: Spun sheet metal

Lens: Acrylic

WEIGHT

Ø 18": 3.7 lbs - 1.7 kg

Ø 24": 5 lbs - 2.2 kg

Ø 36": 7.5 lbs - 3.4 kg

Ø 48": 10 lbs - 4.5 kg

Ø 60": 12.5 lbs - 5.6 kg

Ø 72": 15 lbs - 6.8 kg

CERTIFICATION

ETL: Rated for Indoor Dry/Damp locations. Conforms to UL Standard 1598 and certified to CAN/CSA Standard C22.2 No. 250.0.

WARRANTY

Lumenwerx provides a five-year limited warranty of electrical and mechanical performance of the luminaires, including the LED boards, drivers, and auxiliary electronics. Lumenwerx will repair or replace defective luminaires or components at our discretion, provided they have been installed and operated in accordance with our specifications. Other limitations apply, please refer to the full warranty on our website.