

# MINI PIVOT LINEAR

SURFACE PATTERN  
DIRECT



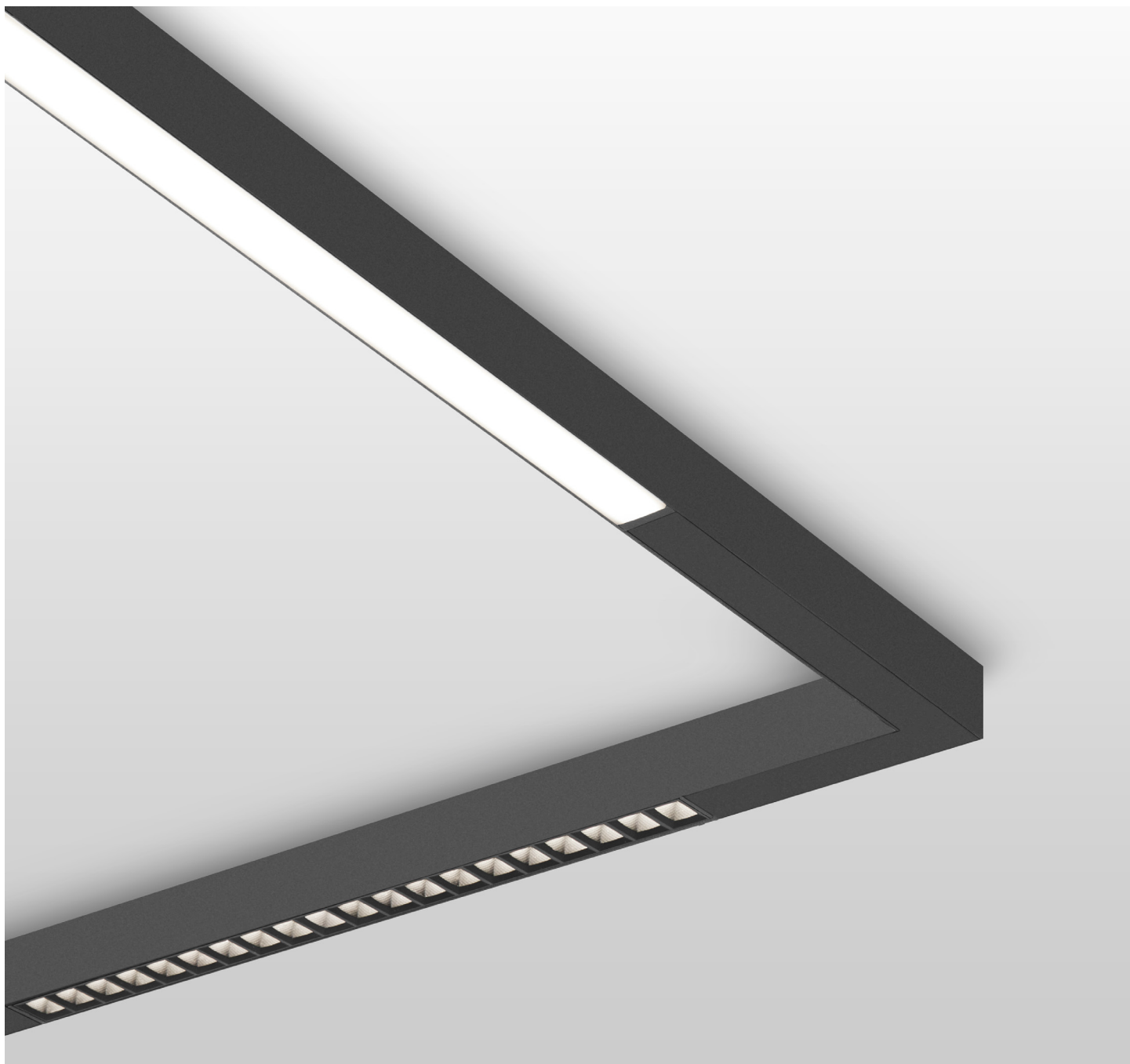
Project: \_\_\_\_\_

Type: \_\_\_\_\_



## DESCRIPTION

With the same crisp and clean aesthetic as its Mini Pivot Track counterpart, Mini Pivot Linear fixtures are track-free lighting units that can be used in conjunction with Mini Pivot Track modules in comprehensive lighting designs, or they can serve as lighting solutions on their own for applications requiring uniform and consistent lighting effects throughout a space. Recessed, surface, or pendant mounted, Mini Pivot Linear delivers direct light distribution with HLO or DPO lensing options.



# MINI PIVOT LINEAR

SURFACE PATTERN  
DIRECT



Project: \_\_\_\_\_  
Type: \_\_\_\_\_

## Order Guide

Example: MIPIVLINSPAT-D-HLO-2FT-BLA-1FT-SW-80CRI-300LMF-27K-3FT-1LEVC90-120V-RD1-1C-DRC-FTMB

A drawing of your combination pattern is required - anything from a line drawing to an architectural drawing. You can also use the grid on page 3 to sketch your layout.

LUMINAIRE ID	DISTRIBUTION	OPTICS <sup>1</sup> Specify the total length for each required optic.	LIGHT SOURCE		CRI
<b>MIPIVLINSPAT</b>	<b>D</b>				
<b>MIPIVLINSPAT</b> - Mini Pivot Linear Surface Pattern	<b>D</b> - Direct	<b>PDPO</b> <sup>2</sup> - Precision Specular Diamond Prism Optic <b>BDPO</b> <sup>2</sup> - Matte Black Diamond Prism Optic <b>GDPO</b> <sup>2</sup> - Graphite Diamond Prism Optic <b>HLO</b> <sup>3</sup> - High-Efficiency Lambertian Optic <b>BLA</b> - Blank	<b>FT</b> <b>FT</b> <b>FT</b> <b>FT</b> <b>FT</b>	<b>IN</b> <b>IN</b> <b>IN</b> <b>IN</b> <b>IN</b>	<b>SW</b> - Static white <b>FS</b> - Full spectrum  <b>80CRI</b> <sup>4</sup> - 80 CRI <b>90CRI</b> <sup>4</sup> - 90 CRI <b>95CRI</b> <sup>5</sup> - 95 CRI
		<sup>1</sup> Specify Prism optics in 7" increments for 10 cell louvers, HLO in 4" increments, Blank in 1" increments. <sup>2</sup> Minimum optic length is 21". <sup>3</sup> Minimum optic length is 24".			<sup>4</sup> Not available with full spectrum. <sup>5</sup> Available with full spectrum only.

LUMEN PACKAGE				COLOR TEMP.	TOTAL LUMINAIRE LENGTH	CORNER TYPE <sup>7,8</sup>
	Low	Medium	High	<b>27K</b> - 2700K <b>30K</b> - 3000K <b>35K</b> - 3500K <b>40K</b> - 4000K	<b>#FT#IN</b> <sup>6</sup> - Specify the total nominal length (#) in 1' and/or 1" increments  <b>Standard nominal lengths:</b> Single units - 2' to 12' Continuous runs: lengths over 12'	<b>#LEVC90</b> <sup>9</sup> - Leveled 90° corner in ceiling <b>#INN90</b> - Inside 90° corner
PDPO	<b>640LMF</b>	<b>940LMF</b>	<b>1450LMF</b>			
BDPO	<b>640LMF</b>	<b>940LMF</b>	x			
GDPO	<b>640LMF</b>	<b>940LMF</b>	<b>1280LMF</b>			
HLO	<b>300LMF</b>	<b>450LMF</b>	<b>600LMF</b>			
						<sup>7</sup> Specify number of corners (#) for each required corner type. <sup>8</sup> Corners are unlit. <sup>9</sup> Consult factory for other degree angles.
						<sup>6</sup> Total luminaire length should equal the sum of all the direct optic lengths.

VOLTAGE	DRIVER <sup>11</sup>	ELECTRICAL	MOUNTING	FINISH <sup>13</sup>
		<b>1C</b>		
<b>120V</b> - 120V <b>277V</b> - 277V <b>UNV</b> - 120V-277V <b>347V</b> <sup>10</sup> - 347V  <sup>10</sup> Available with RD1 driver only.	<b>REMOTE</b> <b>RD1</b> - 1% 0-10V <b>RDA</b> <sup>12</sup> - DALI <b>RLDE1</b> <sup>12</sup> - Lutron Hi-lume 1% Eco <b>RELD1</b> - eldoLED 1% ECOdrive 0-10V <b>RELDO</b> - eldoLED 0.1% SOLOdrive 0-10V  <sup>11</sup> PoE (Power-over-Ethernet) compatible. Consult factory for details. <sup>12</sup> On-site commissioning is required.	<b>1C</b> - 1 circuit	<b>DRC</b> - Drywall ceiling <b>GRD</b> - Grid ceiling	<b>FTMB</b> - Textured matte black <b>FTMW</b> - Textured matte white <b>CF#</b> - Custom finish, specify RAL#  <sup>13</sup> Blank finish will match fixture finish.

# MINI PIVOT LINEAR

SURFACE PATTERN  
DIRECT



Project: \_\_\_\_\_

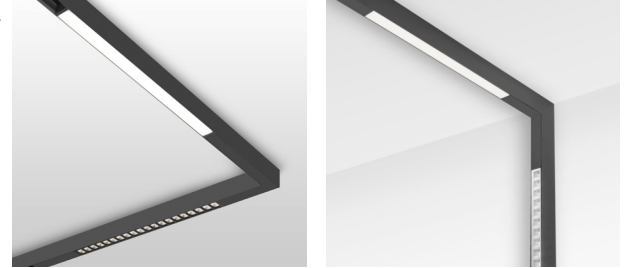
Type: \_\_\_\_\_

## Mini Pivot Linear Pattern Layout

Use the grid below to sketch and label the layout of your combination pattern.

Make sure to follow the guidelines specified in the order code:

- Prism optics in 7 inch increments;  
HLO in 4 inch increments.  
Blank in 1 inch increments.
- Single units - 2' to 12'
- Maximum length for a section is 12'.
- Corners are unlit.



**LEVC90** - Leveled 90° corner in ceiling    **INN90** - Inside 90° corner

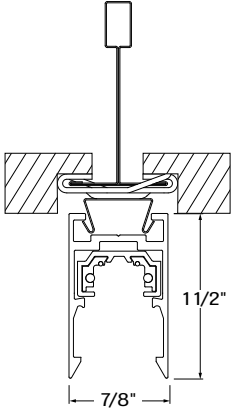


# MINI PIVOT LINEAR

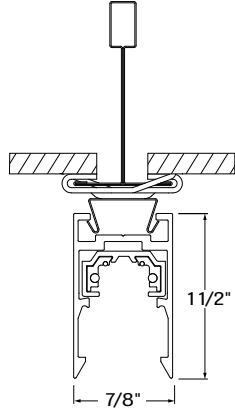
SURFACE PATTERN

DIRECT

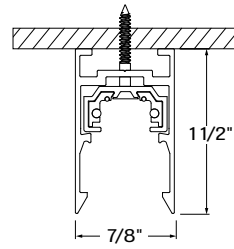
## Dimensions



**GRD** - Grid ceiling with tegular

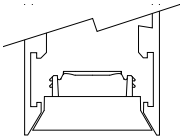


**GRD** - Grid ceiling with T-bar

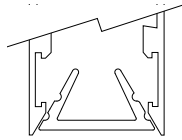


**DRC** - Drywall ceiling

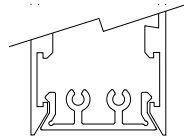
## Section Views



PDPO, BDPO, GDPO



HLO



BLA

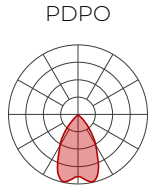
# MINI PIVOT LINEAR



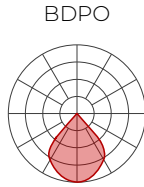
SURFACE PATTERN  
DIRECT

## Photometrics

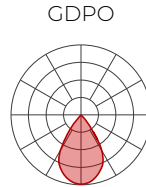
PDPO/BDPO/GDPO values calculated based on four 7in sections at 35K and 90 CRI.  
HLO values calculated based on a 4ft fixture at 35K and 80 CRI.



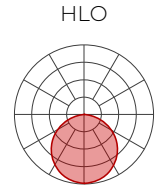
LM/FT	W/FT	LPW
640	5.6	115
940	8.4	112
1450	14.6	99



LM/FT	W/FT	LPW
640	11.5	56
940	18.3	51



LM/FT	W/FT	LPW
640	8.3	77
940	11.9	79
1280	18.1	71



LM/FT	W/FT	LPW
300	3.8	79
450	5.7	78
600	7.8	77

## MULTIPLIER TABLES - CCT/CRI

Use these tables to get results for different color temperatures and CRI for all photometric tables.

### PDPO/BDPO/GDPO

CCT (K)	WATTS		LPW	
	CRI 80	CRI 90	CRI 80	CRI 90
2700	0.93	1.06	1.08	0.94
3000	0.89	1.03	1.12	0.98
3500	0.89	1.00	1.12	1.00
4000	0.88	0.98	1.13	1.02

### HLO

CCT (K)	WATTS		LPW	
	CRI 80	CRI 90	CRI 80	CRI 90
2700	1.04	1.23	0.96	0.81
3000	1.01	1.20	0.99	0.83
3500	1.00	1.18	1.00	0.85
4000	0.97	1.14	1.03	0.87

# MINI PIVOT LINEAR



SURFACE PATTERN

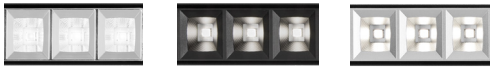
DIRECT

## Technical Specifications

### OPTICS

#### Diamond Prism Optic (DPO)

The Diamond Prism Optic™ (DPO™) is our patent-pending 3-tiered optic meticulously crafted to refract and reflect beams with great precision, effectively keeping glare to a minimum while delivering light of exceptional quality and visual comfort.



#### High-Efficiency Lambertian Optic (HLO)

Shielding of diffusing 0.075" thick acrylic provides up to 88% transmission and good obscuration. Matte white reflectors distribute LED output across the shielding. Luminaire brightness is controlled by the ratio of luminous flux to shielding area.



#### Blank (BLA)

Aluminum Blank covers provide spacing – functional or rhythmic – in the direct component of a Mini Pivot Linear luminaire. Covers finished to match the luminaire housing, and snap into the aperture.



### LIGHT SOURCE - STATIC WHITE

Custom linear array of high-flux LEDs mounted onto aluminum-backed circuitry with quick-connect wiring to facilitate service and optimize thermal management. Available in 2700K, 3000K, 3500K and 4000K with a minimum 80 CRI and an option for 90 CRI with elevated R9 value. Color consistency maintained to within 3 SDCM. All LEDs have been tested in accordance with IESNA LM-80-08 and the results have shown L80 lumen maintenance greater than 60,000 hours. Absolute product photometry is measured and presented in accordance with IESNA LM-79, unless otherwise indicated.

### PATTERN LENGTH

All individual sections are joined together onsite using the joiner kits provided. Lumenwerx offers joiner kits that are extremely simple to work with in the field.

### ELECTRICAL

Factory-set, adjustable output current LED driver with universal (120-277VAC) input. Dimmable from 100% to 1% with 0-10V dimming control. Rated life (90% survivorship) of 50,000 hours at 50°C max. ambient (and 70°C max. case) temperature. At maximum driver load: Efficiency > 84%, PF > 0.9, THD < 20%. Other specifiable options include Lutron Hi-Lume 1% Eco, eldoLED 1% ECOdrive 0-10V, eldoLED 0.1% SOLOdrive 0-10V, and DALI protocol drivers. All of our standard 0-10V drivers are NEMA 410 compliant.

### PoE

Depending on the PoE manufacturer selected, Lumenwerx will install the node in factory as either integral to the luminaire or as a remote module. Factory programming of the PoE node may or may not enable the following functionalities: lumen package, Duo (tunable white), emergency battery backup, and sensor integration. These must be addressed and evaluated on a case-by-case basis.

### MOUNTING OPTIONS

Fixtures can be mounted directly to drywall or grid ceiling, hardware supplied by others.

### FINISH

Textured matte white and black. Custom colors also available (provide RAL #).

# MINI PIVOT LINEAR



SURFACE PATTERN

DIRECT

## CONSTRUCTION

**Housing** - Extruded aluminum, up to 90% recycled content

**HLO lens** - Acrylic

**Louvers** - Polycarbonate

**Joining system** - Die cast zinc

**End caps** - Die cast aluminum

## WEIGHT

**4ft** - 2.2 lbs - 1.0 kg

**8ft** - 4.41 lbs - 2.0 kg

**12ft** - 6.8 lbs - 3.1 kg

## CERTIFICATION

**ETL** - Rated for Indoor Dry/Damp locations. Conforms to UL Standard 1598 and certified to CAN/CSA Standard C22.2 No. 250.0.

## WARRANTY

Lumenwerx provides a five-year limited warranty on electrical and mechanical performance of the luminaires, including the LED boards, drivers, and auxiliary electronics. Lumenwerx will repair or replace defective luminaires or components at our discretion, provided they have been installed and operated in accordance with our specifications. Other limitations apply, please refer to the full warranty on our website.