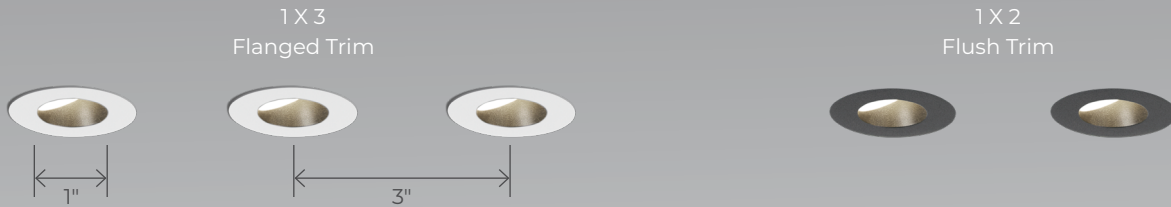


# PETITE MULTI-APERTURE ROUND RECESSED WALL WASH



The Petite family strikes that perfect balance of compact size, streamlined aesthetics, and high performance. Through their 1" lens apertures, these meticulously engineered downlight, cylinder, and multi-aperture luminaires breathe light into spaces with a quiet, straightforward sophistication.

### Array



### Beam Angles

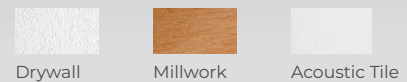


Wall Wash

### Light Source



### Ceiling Types



### Plenum Clearance

As low as 1 3/4"



### Petite Family (Refer to other spec sheets)

#### Downlight



Adjustable



Recessed



Wall Wash

#### Multi-aperture



Adjustable



Recessed



Wall Wash

#### Cylinder



Pendant



Surface

# PETITE MULTI-APERTURE ROUND RECESSED WALL WASH



Project: \_\_\_\_\_

Type: \_\_\_\_\_

## Order Guide

LUMINAIRE ID <sup>1</sup>	ARRAY	TRIM STYLE	LENS	CEILING THICKNESS	INSTALLATION TYPE <sup>2</sup>	MOUNTING OPTION <sup>6</sup>
<b>PETMRRWW</b>			<b>WW</b>			
<b>PETMRRWW</b> - Petite Multi-aperture Round Recessed Wall Wash  <sup>1</sup> Recessed (fixed) and Recessed Adjustable also available. Consult other spec sheets.	<b>1X2M</b> - 1 X 2 <b>1X3M</b> - 1 X 3	<b>TRM</b> - Flanged trim <b>TRMP</b> - Flush flanged trim drywall mudplate <b>TRMW</b> - Flush flanged trim millwork	<b>WW</b> - Wall wash diffuser	<b>05IN</b> - Up to 0.5" <b>1IN</b> - 0.5" - 1"	<b>IC</b> <sup>3,4</sup> - Type-IC <b>NIC</b> <sup>5</sup> - Type Non-IC <b>CP</b> - Chicago Plenum Type-IC (CCEA)  <sup>2</sup> See page 3 for more details. <sup>3</sup> Not available with 1 X 3 array. <sup>4</sup> Up to 7 W in 1 X 2 array. <sup>5</sup> Up to 10 W for 1 X 2 array. Up to 7 W in 1 X 3 array.	<b>ASB</b> - Adjustable standard bar hangers <b>FMB</b> - Flush mount bars <b>ACB</b> - Adjustable commercial bar hangers <b>AHC</b> - Adjustable hat channel bars <b>NA</b> - None  <sup>6</sup> See page 5 for more detail

LIGHT SOURCE	BEAM	COLOR QUALITY	CRI	COLOR TEMPERATURE	DRIVER
	<b>WW</b>				
<b>SW</b> - Static white  <b>SOLA</b> - Dim-to-warm single channel control <b>DUO</b> - Tunable white 2-channel control	<b>WW</b> - Wall wash	<b>2STP</b> - 2 Step MacAdam Ellipse <b>3STP</b> - 3 Step MacAdam Ellipse  <b>3STP</b> - 3 Step MacAdam Ellipse	<b>90CRI</b> - 90 CRI <b>95CRI</b> - 95 CRI <b>80CRI</b> - 80 CRI  <b>90CRI</b> - 90 CRI	<b>27K</b> - 2700K <b>30K</b> - 3000K <b>35K</b> - 3500K <b>40K</b> - 4000K  <b>SOLA</b> <b>30K18K</b> - 3000K to 1800K <b>27K18K</b> - 2700K to 1800K  <b>DUO</b> <b>65K27K</b> - 6500K to 2700K <b>50K27K</b> - 5000K to 2700K	<b>INTEGRAL</b> <sup>7</sup>  <b>REMOTE</b> <sup>8</sup> <sup>7</sup> Access above the ceiling is required. <sup>8</sup> A remote driver box is provided, see page 4 for details.

VOLTAGE	WATTAGE	DIMMING <sup>12</sup>	BAFFLE FINISH	TRIM FLANGE FINISH
<b>120V</b> - 120V <b>277V</b> - 277V <b>UNV</b> - 120V-277V <b>347V</b> <sup>9</sup> - 347V  <sup>9</sup> Available with RD1 driver only. Please consult factory.	<b>7W</b> - 7 W, up to 505 lm <b>10W</b> <sup>10</sup> - 10 W, up to 667 lm  <b>SOLA</b> <b>10W</b> - 10 W output, up to 269 lm <b>14W</b> <sup>11</sup> - 10 W output, up to 358 lm  <b>DUO</b> <b>7W</b> - 7 W output, up to 226 lm	<b>D1</b> - 1% 0-10V <b>ELV</b> <sup>13</sup> - ELV 120V <b>TRI</b> <sup>13</sup> - TRIAC 120V <b>ELDI</b> - eldoLED 1% ECOdrive 0-10V  <sup>12</sup> PoE (Power-over-Ethernet) compatible. Consult factory for details. <sup>13</sup> Available with 120V only.  <b>SD1</b> - 1% 0-10V <b>SELV</b> <sup>13</sup> - ELV 120V <b>STRI</b> <sup>13</sup> - TRIAC 120V	<b>FTMW</b> - Textured matte white <b>FTMB</b> - Textured matte black <b>FSPC</b> - Specular <b>FSSPC</b> - Semi-specular <b>FCHP</b> - Champagne <b>CF#</b> - Custom finish, specify RAL# <b>NA</b> - Not applicable	<b>FTMW</b> - Textured matte white <b>FTMB</b> - Textured matte black <b>FSPC</b> - Specular <b>FSSPC</b> - Semi-specular <b>FCHP</b> - Champagne <b>CF#</b> - Custom finish, specify RAL# <b>NA</b> - Not applicable
<b>FOR FULL REMOTE DRIVER SPECIFICATION, SEE "REMOTE DRIVER" SECTION BELOW.</b>				

## REMOTE DRIVER RD1, RELV, RTRI, RSD1, RSELV, RSTRI OPTIONS

REMOTE DRIVER <sup>14</sup>	LUMINAIRE QTY.	LUMINAIRE ID	VOLTAGE	WATTAGE	DIMMING <sup>18</sup>
<b>RDB</b> - Remote driver  <sup>14</sup> Specify each required remote driver box on a separate line.	<b>1X</b> - 1 luminaire <b>2X</b> - 2 luminaires <b>3X</b> - 3 luminaires	<b>PETMRRWW</b> - Petite Multi-aperture Round Recessed Wall Wash	<b>120V</b> - 120V <b>277V</b> - 277V <b>UNV</b> - 120V-277V <b>347V</b> <sup>15</sup> - 347V  <sup>15</sup> Available with RD1 driver only. Please consult factory.	<b>7W</b> - 7 W, up to 505 lm <b>10W</b> <sup>16</sup> - 10 W, up to 667 lm  <sup>16</sup> Only available in 1 X 2 array with Type-NIC. <sup>17</sup> Not available with Type-IC.  <b>SOLA</b> <b>10W</b> <sup>16</sup> - 10 W output, up to 357 lm  <b>DUO</b> <b>7W</b> <sup>17</sup> - 7 W output, up to 266 lm	<b>RD1</b> - 1% 0-10V <b>RELV</b> <sup>19</sup> - ELV 120V <b>RTRI</b> <sup>19</sup> - TRIAC 120V <b>RLDE1</b> <sup>20</sup> - Lutron Hi-lume 1% Eco <b>RDA</b> <sup>20</sup> - DALI  <b>SOLA</b> <b>RSD1</b> - Single 0-10V input <b>RSELV</b> <sup>19</sup> - ELV 120V <b>RSTRI</b> <sup>19</sup> - TRIAC 120V  <b>DUO</b> <b>RDMX</b> <sup>20</sup> - DMX <b>RDDA</b> <sup>20</sup> - DALI DT6 <b>RDDA8</b> <sup>20</sup> - DALI DT8  <sup>18</sup> For configurations involving different sizes on a remote driver, please consult factory. <sup>19</sup> Available with 120V only. <sup>20</sup> On-site commissioning is required. <sup>21</sup> For emergency battery, code will be like the following example: RD1+EB.

EXAMPLE CODE:

<b>LIGHT</b>	PETMRRWW-TRM-WW-05IN-IC-ASB-SW-WW-2STP-90CRI-35K-UNIV-7W-D1-FTMW-FTMW	<b>REMOTE DRIVER</b>	RDBC-2X-PETMRRWW-RD1 RDBC-1X-PETMRRWW-RD1
--------------	---	----------------------	--

# PETITE MULTI-APERTURE ROUND RECESSED WALL WASH

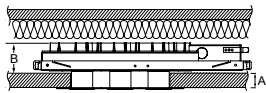


## Installation Types

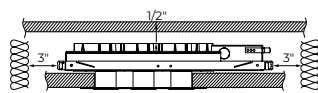
IC - Type-IC NIC - Type-Non IC		
INTEGRAL	1X2M - 1 X 2	1X3M - 1 X 3
REMOTE	1X2M - 1 X 2	1X3M - 1 X 3

- For dimension B, see the PLENUM CLEARANCE table below.

### PLENUM CLEARANCE

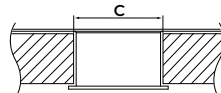


IC - Insulated ceiling

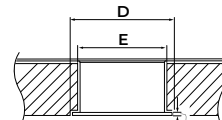


NIC \* - Non insulated ceiling  
\* No insulation within 3" of the fixture.

### CUT-OUT DIMENSIONS



TRM - TRMP



TRMW  
1/16"

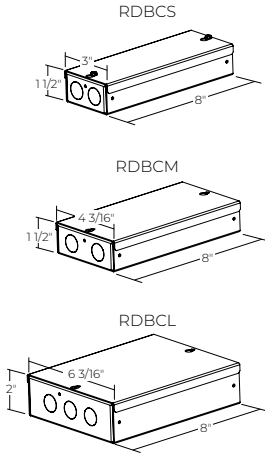
PLENUM CLEARANCE HEIGHT AND CEILING THICKNESS					
		IC - TYPE IC		NIC - TYPE NON-IC	
A	Ceiling Thickness	1IN	0.5IN	1IN	0.5IN
B	Integral	2 1/8" (FMB) 4" (ASB, ACB,AHC)		2 5/8" (FMB) 4" (ASB, ACB,AHC)	
	Remote	1 3/4" (FMB) 4" (ASB, ACB,AHC)	2 1/8" (FMB) 4" (ASB, ACB,AHC)	2 1/4" (FMB) 4" (ASB, ACB,AHC)	2 5/8" (FMB) 4" (ASB, ACB,AHC)

CUT-OUT DIMENSIONS				
		Drywall	Acoustix Tile	Millwork
C	TRM	Ø 1 11/16"		N/A
	TRMP	Ø 1 1/16"	N/A	
D	TRMW	N/A		Ø 1 13/16"
E		Ø 1 11/16" with 1/6" lip		

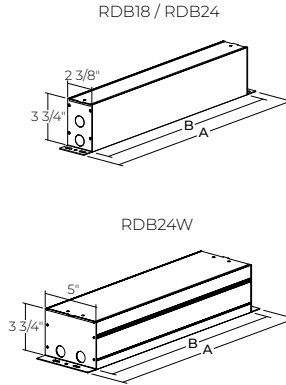
# PETITE MULTI-APERTURE ROUND RECESSED WALL WASH



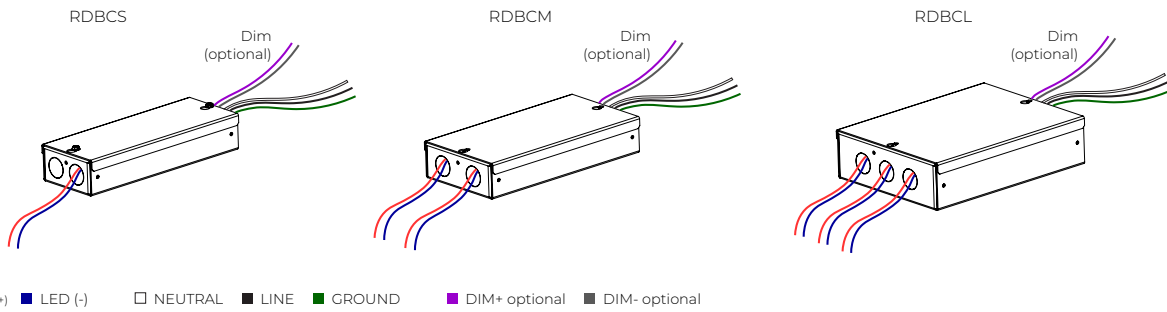
## REMOTE DRIVER BOX



DRIVER	RDB	# DRIVERS
RD1	RDBCS	1X
	RDBCM	2X
	RDBCL	3X
RELV RTRI RDA RELD0 RELD1	RDBCS	1X
	RDBCM	2X, 3X



DRIVER	RDB	A	B
RLDE1	RDB18	20"	18"
RDMX RDDA RDDA8 RDD1 RPSQ0	RDB24	26"	24"
RD1+EB RELV+EB RTRI+EB			
RLDE1+EB RDA+EBI RELD1+EB RELD0+EB	RDB24W	26"	24"

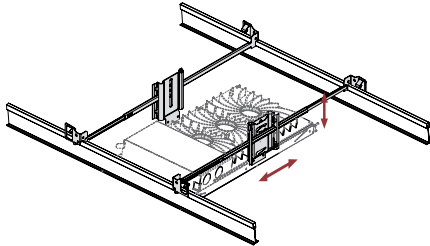


# PETITE MULTI-APERTURE ROUND RECESSED WALL WASH



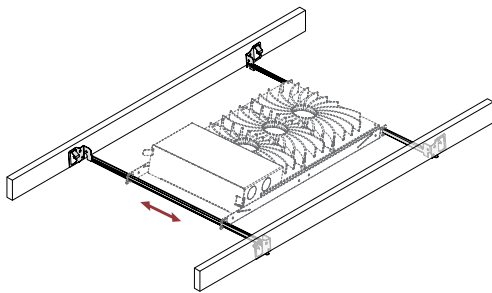
## Mounting Options

### ASB - Adjustable Standard Bar Hangers



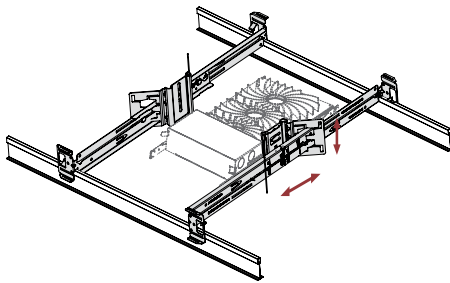
Adjustable Standard Bar hangers can be used in both commercial and residential applications and are adjustable to various heights in both Grid Ceiling and Drywall mounting. ASB hangers are less rigid and versatile than ACB hangers.

### FMB - Flush Mount Bars



Flush Mount Bars are best used in residential applications, fitting snug to the surface and suitable for Wood, Metal, and Drywall mounting. The flush mounted bars are static and can't be adjusted.

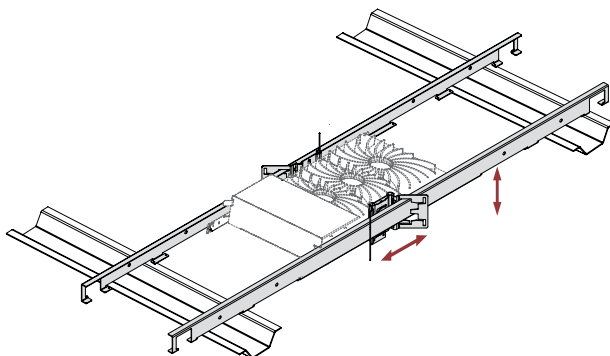
### ACB - Adjustable Commercial Bar Hangers



Adjustable Commercial Bar hangers can be used in both commercial and residential applications and are by far the most versatile mounting bar we offer with its adjustability to various heights. ACB hangers are suitable for Grid Ceiling, Drywall, Metal, Wood and Frame mounting.

- Extremely rigid
- Fits into C-Channel notches in a Butterfly Bracket

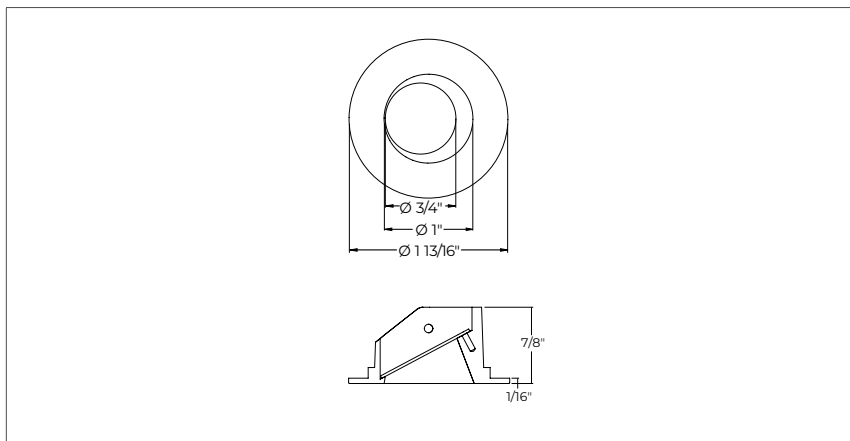
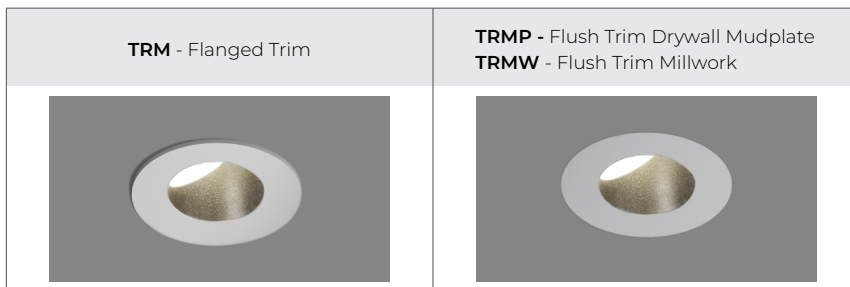
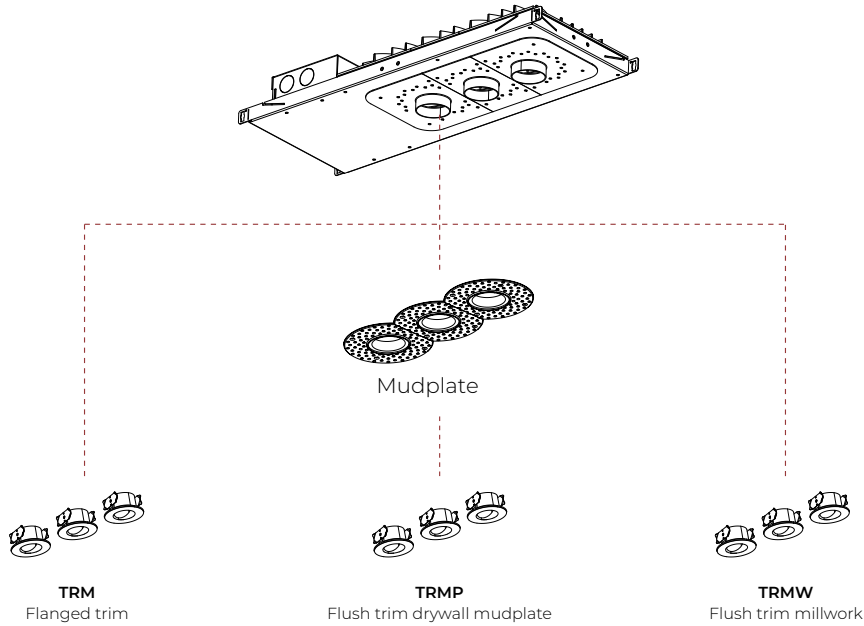
### AHC - Adjustable Hat Channel Bars



Adjustable Hat Channel bars can be used in both commercial and residential applications and come with a butterfly clip to adjust to various heights. AHC bars can be hung downward by 90 degrees in vertical position, and once wired, can be shifted onto the horizontal mounting plane. AHC bars are suitable for both Drywall and wood ceiling applications.

# PETITE MULTI-APERTURE ROUND RECESSED WALL WASH

## Trim Style



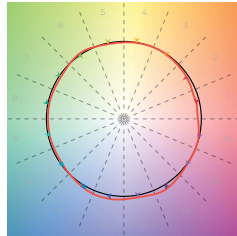
# PETITE MULTI-APERTURE ROUND RECESSED WALL WASH



## Color Quality

### COLOR QUALITY - 3500K

TM-30 R <sub>r</sub>	91
TM-30 R <sub>a</sub>	100
CRI	90
R9	> 50

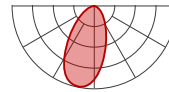


## Photometrics

The light distribution will vary depending on baffle finish and trim style.

Delivered Lumens - At 3500K, 90 CRI, with No Lens. Efficacy Based on Delivered Lumens

WATTAGE		7W		10W		14W	
Trim Style	Baffle Finish	lm	lm/W	lm	lm/W	lm	lm/W
Trim	White	243	35	316	32	422	30
	Black Champagne	190	27	246	25	328	23
	Specular Semi-specular	217	31	281	28	375	27
Trimless	White	NA	NA	NA	NA	NA	NA
	Black Champagne	NA	NA	NA	NA	NA	NA
	Specular Semi-specular	NA	NA	NA	NA	NA	NA



WW - Wall Wash

## MULTIPLIERS

Please follow the multiplier tables to ensure correct lumen value. CCT, CRI, and lensing will change the lumen value.

### CCT

2700K	0.91
3000K	0.96
3500K	1
4000K	1.01

### CRI

80 CRI	1
90 CRI	1
95 CRI	0.77

For SOLA and DUO,  
please consult factory.

# PETITE MULTI-APERTURE ROUND RECESSED WALL WASH



## Technical Specifications

### OPTIC

The CircaFlex™ Optic uses advanced beam-splitting technology to allow light to follow an intended optical path with maximal precision, minimal spread, and even distribution.

### LIGHT SOURCE

Compact COB (Chip-On-Board) LED module, available in 2700K, 3000K, 3500K and 4000K with a choice of 80 CRI, 90 CRI, or 95 CRI, with elevated R9 value for 90 CRI and above. Color consistency is maintained to within 2 SDCM. All LEDs have been tested in accordance with IESNA LM-80-08 and the results have shown L80 lumen maintenance greater than 60,000 hours. Absolute product photometry is measured and presented in accordance with IESNA LM-79, unless otherwise indicated.

### CHROMAWERX

#### Chromawerx SOLA

Chromawerx SOLA is single-channel control that dims output while warming the color temperature in a pre-determined relationship. Two color temperature range options are offered: 3000K to 1800K, and 2700K to 1800K. A simple analog control adjusts a specially populated LED array to emulate the effect of dimming a filament source.

#### Chromawerx DUO

Chromawerx DUO offers a two-channel control system which uses analog or digital protocols for synchronous control of both cool to warm LED arrays - maintaining a CRI above 90. Two color temperature range options are offered: 6500K to 2700K, and 5000K to 2700K. The range of color DUO offers is useful for entraining circadian rhythms, stimulating alertness, and compensating for jet lag among other applications. The Chromawerx drivers are programmed to limit maximum light output and power usage across all color temperatures. When paired with DALI drivers (DDA/DDA8), color tuning follows a linear dimming curve.

### ELECTRICAL

Unless otherwise specified, dimming down to 1%. At maximum driver load: efficiency>84%, PF>0.9, THD<20%.

**Integral:** 1% 0-10V, ELV 120V, TRIAC 120V, eldoLED 1% ECOdrive 0-10V, eldoLED 0.1% SOLOdrive 0-10V, Lutron Hi-lume Premier 0.1% EcoSystem.

**Remote:** 1% 0-10V, ELV 120V, TRIAC 120V, Lutron Hi-lume 1% Eco, DALI, eldoLED 1% ECOdrive 0-10V, eldoLED 0.1% SOLOdrive 0-10V, Lutron Hi-lume Premier 0.1% EcoSystem, DMX, Lutron T-series (tunable white).

**Emergency Battery Options:** Remotely-installed, long-life, high-temperature, maintenance-free, Bodine Lithium-Ion battery pack with self-test functionality, test switch and charge indicator. IOTA and Fulham options available upon request. Minimum of 90 minutes operation, and recharge time of 24 hours. For fixtures less than 10W, the battery provides 6W of emergency light output. For fixtures 10W and over, the battery provides 10W.

### PoE

Depending on the PoE manufacturer selected, Lumenwerx will install the node in factory as either integral to the luminaire, or as a remote module. Factory programming of the PoE node may or may not enable the following functionalities: lumen package, DUO (tunable white), emergency battery backup, and sensor integration. These must be addressed and evaluated on a case-by-case basis.

### CONSTRUCTION

#### Housing

For new construction, 20 gauge powder coated steel. 18 gauge galvanized steel junction box with ½" trade size knockouts. Adjustable hanger bars and butterfly brackets are included. Adjustable commercial hat channel and flush mounted brackets are also available.

**Baffle:** Die-cast aluminum mounted with retaining spring clips

**Heat sink:** Die-cast aluminum

### WEIGHT

	1 X 2	1 X 3
<b>Integral</b>	5.1 lbs - 2.3 kg	6.2 lbs - 2.8 kg
<b>Remote</b>	3.2 lbs - 1.4 kg	4.2 lbs - 1.9 kg

### LENS



Wall Wash

### ENVIRONMENT

Ambient temperature at fixture location shall be within 0°C/32°F - 25°C/77°F, indoor dry or damp as well as outdoor damp use (canopies or marquees).



# PETITE MULTI-APERTURE ROUND RECESSED WALL WASH



## CERTIFICATION

**ETL** - Rated for Indoor dry/damp locations. Conforms to UL Standard 1598 and certified to CAN/CSA Standard C22.2 No. 250.0

## WARRANTY

Lumenwerx provides a five-year limited warranty on electrical and mechanical performance of the luminaires, including the LED boards, drivers, and auxiliary electronics. Lumenwerx will repair or replace defective luminaires or components at our discretion, provided they have been installed and operated in accordance with our specifications. Other limitations apply, please refer to the full warranty on our website.