

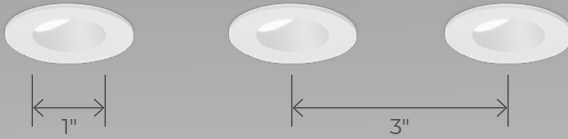
PETITE 1" MULTI-APERTURE

ROUND RECESSED WALL WASH

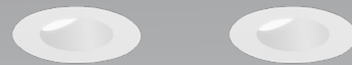
NEW CONSTRUCTION



1 X 3
Flanged Trim



1 X 2
Flush Flanged Trim



The Petite family strikes that perfect balance of compact size, streamlined aesthetics, and high performance. Through their 1" lens apertures, these meticulously engineered downlight, cylinder, and multi-aperture luminaires breathe light into spaces with a quiet, straightforward sophistication.



Array



Beam Angles



Wall Wash

Light Source



Ceiling Types



Plenum Clearance

As low as 1 3/4"



Petite Family (Refer to other spec sheets)

Downlight



Adjustable



Recessed



Wall Wash

Multi-aperture



Adjustable



Recessed



Wall Wash

Cylinder



Pendant



Surface

PETITE 1" MULTI-APERTURE

ROUND RECESSED WALL WASH

NEW CONSTRUCTION



Project: _____
 Type: _____

Order Guide

LUMINAIRE ID ¹	ARRAY	TRIM STYLE	BAFFLE FINISH	TRIM FLANGE FINISH	LENS
PETIMRRWW					WW
PETIMRRWW - Petite 1" Multi-aperture Round Recessed Wall Wash <small>¹ Recessed (fixed) and Recessed Adjustable also available. Consult other spec sheets.</small>	1X2M - 1 X 2 1X3M - 1 X 3	TRM - Flanged trim TRMP - Flush flanged trim drywall mudplate TRMW - Flush flanged trim millwork	FTMW - Matte white FTMB - Matte black FSPC - Satin silver FSSPC - Matte silver FCHP - Champagne FDBZ - Dark bronze FPF - Primer finish CF# - Custom finish, specify RAL#	FTMW - Matte white FTMB - Matte black FSPC - Satin silver FSSPC - Matte silver FCHP - Champagne FDBZ - Dark bronze FPF - Primer finish CF# - Custom finish, specify RAL#	WW - Wall wash diffuser
CEILING THICKNESS	INSTALLATION TYPE ²	MOUNTING OPTION ⁴	LIGHT SOURCE	BEAM	COLOR QUALITY
				WW	
05IN - Up to 0.5" 1IN - 0.5" - 1"	IC ³ - Type-IC NIC ³ - Type Non-IC CP ³ - Chicago Plenum Type-IC (CCEA) <small>² See page 3 for more details. ³ See Wattage section for limitations.</small>	2AB - 2" tall adjustable bar hangers FMB - Flush mount bars ASB - Adjustable standard bar hangers ACB - Adjustable commercial bar hangers AHC - Adjustable hat channel bars NA - No bar hangers <small>⁴ See page 6 for more details.</small>	SW - Static white SOLA - Dim-to-warm single channel control DUO - Tunable white 2-channel control	WW - Wall wash	2STP - 2 Step MacAdam Ellipse 3STP - 3 Step MacAdam Ellipse 3STP - 3 Step MacAdam Ellipse
CRI	COLOR TEMPERATURE	DRIVER ⁶	VOLTAGE	WATTAGE PER LIGHT	DIMMING ¹³
80CRI - 80+ CRI 90CRI - 90+ CRI 95CRI - 95+ CRI	22K ⁵ - 2200K 24K ⁵ - 2400K 27K - 2700K 30K - 3000K 35K - 3500K 40K - 4000K 50K ⁵ - 5000K <small>⁵ Not available with 95+ CRI.</small>	INTEGRAL ⁷ <small>⁶ A driver provided per light. ⁷ Access above the ceiling is required. ⁸ A remote driver box is provided.</small>	120V - 120V 277V - 277V UNV - 120V-277V	7W ^{9,10} - 7 W output, up to 243 lm 10W ^{11,12} - 10 W output, up to 316 lm SOLA 10W ^{11,12} - 10 W output, up to 244 lm	D1 - 1% 0-10V ELV ¹⁴ - ELV 120V TRI ¹⁴ - TRIAC 120V ELDI - eldoLED 1% ECOdrive 0-10V ELDO - eldoLED 0.1% SOLOdrive 0-10V PEQO ¹⁵ - Lutron Hi-lume Premier 0.1% EcoSystem <small>¹³ PoE (Power-over-Ethernet) compatible. Consult factory for details. ¹⁴ Available with 120V only. ¹⁵ On-site commissioning is required.</small>
90CRI - 90+ CRI	SOLA 30K18K - 3000K to 1800K 27K18K - 2700K to 1800K DUO 65K27K - 6500K to 2700K 50K27K - 5000K to 2700K	REMOTE ⁸			SOLA SD1 - Single 0-10V input SELV ¹⁴ - ELV 120V STRI ¹⁴ - TRIAC 120V
DO NOT SPECIFY FOR REMOTE. SEE "REMOTE DRIVER BOX" SECTION BELOW.					

Remote Driver Box

Ordered separately. Specify each required remote driver box on a separate line. ←

REMOTE DRIVER ¹⁶	LUMINAIRE QTY. ¹⁷	LUMINAIRE ID	VOLTAGE	WATTAGE PER LIGHT	DIMMING	
		PETIMRRWW				
RDB# - Remote driver box <small>¹⁶ Specify an RDB number (#) for each required remote driver box.</small>	2X ¹⁸ - 2 luminaires 3X ¹⁹ - 3 luminaires <small>¹⁷ Each luminaire requires its own driver. Specify the number of luminaires per driver box. ¹⁸ Only available with 1 X 2 array. ¹⁹ Only available with 1 X 3 array.</small>	PETIMRRWW - Petite 1" Multi-aperture Round Recessed Wall Wash	120V - 120V 277V - 277V UNV - 120V-277V 347V ²⁰ - 347V <small>²⁰ Available with RDI driver only. Please consult factory.</small>	7W ^{21,22} - 7 W output, up to 243 lm 10W ^{23,24} - 10 W output, up to 316 lm SOLA 10W ^{23,24} - 10 W output, up to 244 lm DUO 7W ^{22,24} - 7 W output, up to 205 lm	RD1 - 1% 0-10V RELV ²⁵ - ELV 120V RTRI ²⁵ - TRIAC 120V RLDE1 ²⁶ - Lutron Hi-lume 1% Eco RDA ²⁶ - DALI RELD1 - eldoLED 1% ECOdrive 0-10V <small>²⁵ Available with 120V only. ²⁶ On-site commissioning is required. ²⁷ To specify, add +EB to the selected dimming option, e.g. RDI+EB.</small>	RELDO - eldoLED 0.1% SOLOdrive 0-10V RPEQO ²⁶ - Lutron Hi-lume Premier 0.1% EcoSystem +EB ²⁷ - Emergency battery RDD1 - Dual 0-10V input for CCT/intensity RLD2 ²⁶ - Lutron DALI-2 digital
EXAMPLE CODE:	LIGHT	PETIMRRWW-1X2M-TRM-FTMW-FTMW-WW-05IN-IC-ASB-SW-WW-2STP-90+CRI-35K-REMOTE	REMOTE DRIVER	RDB1-2X-PETIMRRWW-120V-7W-RDI		



PETITE 1" MULTI-APERTURE

ROUND RECESSED WALL WASH

NEW CONSTRUCTION



Housing Dimensions

INSTALLATION TYPES

IC - Type-IC / NIC - Type Non-IC / CP - Chicago Plenum Type-IC (CCEA)	
Integral	Remote
1X2M - 1 X 2	
1X3M - 1 X 3	

- Bar hangers are not shown in the drawings.
- For integral, access above the ceiling is required.
- For remote dimming, a remote driver box is provided.

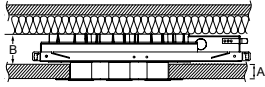
PETITE 1" MULTI-APERTURE

ROUND RECESSED WALL WASH

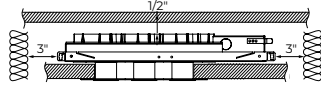
NEW CONSTRUCTION



PLENUM CLEARANCE & CEILING THICKNESS

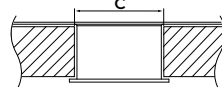


IC/CP - Insulated ceiling

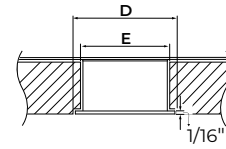


NIC - Non-insulated ceiling

CUT-OUT DIMENSIONS



TRM - TRMP - TLMP - GLR



TRMW

PLENUM CLEARANCE HEIGHT AND CEILING THICKNESS					
		IC/CP		NIC	
A	Ceiling thickness	1IN	0.5IN	1IN	0.5IN
	Integral	2 1/8" (2AB, FMB) 4" (ASB, ACB, AHC)		2 5/8" (2AB, FMB) 4" (ASB, ACB, AHC)	
B	Remote	1 3/4" (2AB, FMB) 4" (ASB, ACB, AHC)	2 1/8" (2AB, FMB)	2 1/4" (2AB, FMB)	2 5/8" (2AB, FMB)

* Clearance between sides of luminaire and parts of building must be 1/2" minimum; clearance to insulating materials to be 3" minimum, unless luminaires are IC rated.

CUT-OUT DIMENSIONS				
		Drywall	Acoustic tile	Millwork
C	TRM	Ø 1 11/16"		N/A
	TRMP	Ø 1 11/16"	N/A	
D	TRMW	N/A		Ø 1 13/16"
				Ø 1 11/16" with 1/16" lip

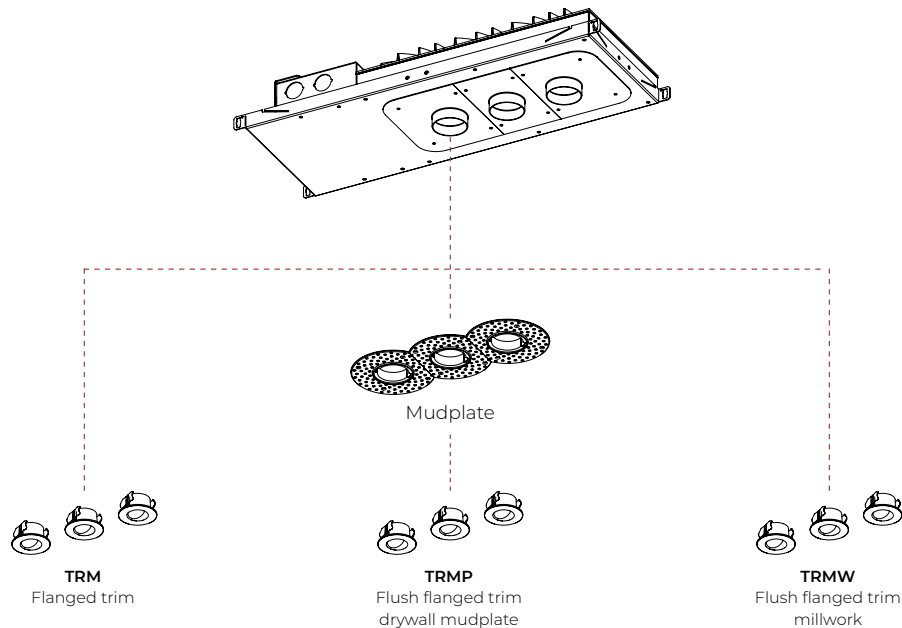
PETITE 1" MULTI-APERTURE

ROUND RECESSED WALL WASH

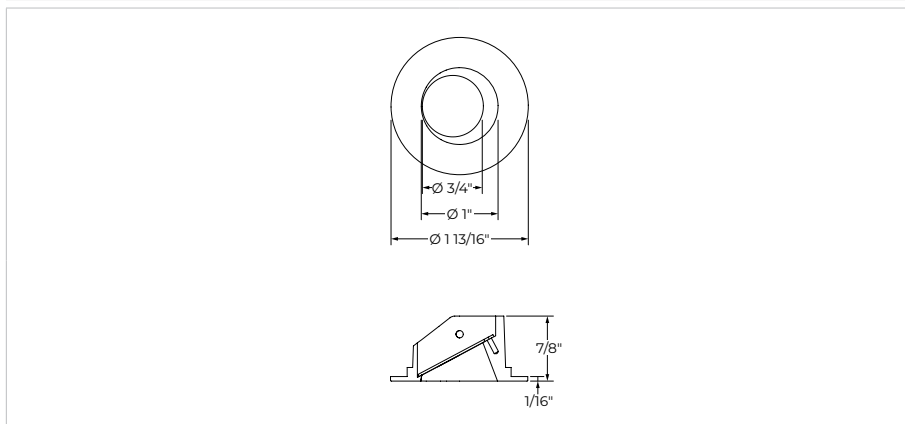
NEW CONSTRUCTION



Trim Style



TRM Flanged Trim	TRMP / TRMW Flush Flanged Trim



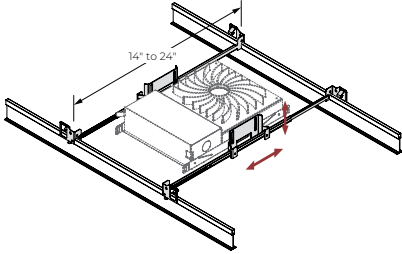
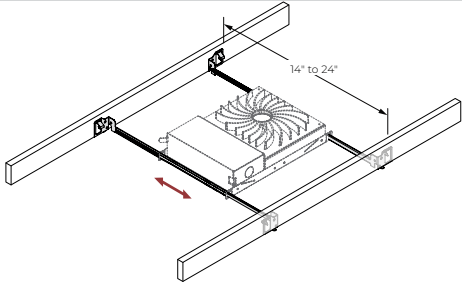
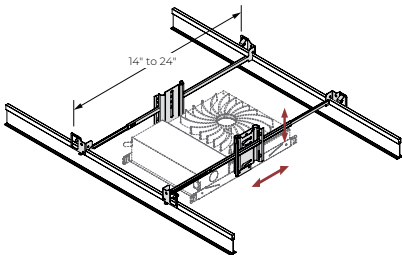
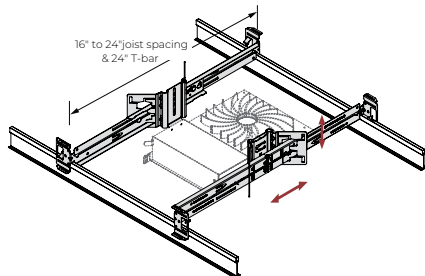
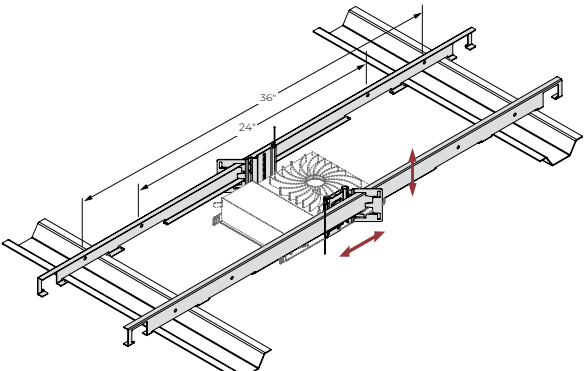
PETITE 1" MULTI-APERTURE

ROUND RECESSED WALL WASH

NEW CONSTRUCTION



Mounting Options

<p>2AB - 2" tall Adjustable Bar Hangers</p>  <ul style="list-style-type: none"> • Use in commercial and residential applications. • Suitable for grid ceiling and drywall mounting. • Adjustable to various heights. • Low profile adjustable bar hangers, as low as 2". • Joist spacing: 14" to 24". 	<p>FMB - Flush Mount Bars</p>  <ul style="list-style-type: none"> • Use in residential applications. • Suitable for wood, metal, and drywall mounting. • Joist spacing: 14" to 24".
<p>ASB - Adjustable Standard Bar Hangers</p>  <ul style="list-style-type: none"> • Use in commercial and residential applications. • Suitable for grid ceiling and drywall mounting. • Adjustable to various heights. • Joist spacing: 14" to 24". 	<p>ACB - Adjustable Commercial Bar Hangers</p>  <ul style="list-style-type: none"> • Use in commercial and residential applications. • Suitable for grid ceiling, drywall, metal, wood, and frame mounting. • Adjustable to various heights. • Fits into C-channel notches in a butterfly bracket. • Joist spacing: 16" to 24". Extensions to 36" and 48" available, consult factory. • T-bar spacing: 24"
<p>AHC - Adjustable Hat Channel Bars</p>  <ul style="list-style-type: none"> • Use in commercial and residential applications. • Suitable for wood ceiling and drywall mounting. • Adjustable to various heights. • Fits into C-channel notches in a butterfly bracket. • Hat channel spacing: 24" and 36". 	

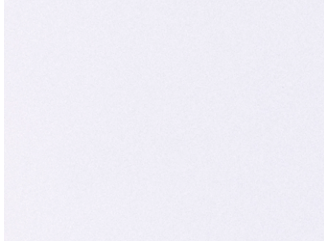
PETITE 1" MULTI-APERTURE

ROUND RECESSED WALL WASH

NEW CONSTRUCTION



Finishes



FTMW - Matte white



FTMB - Matte black



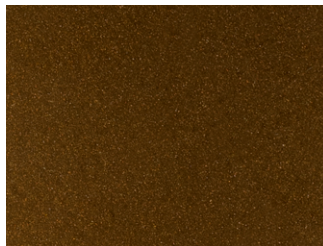
FSPC - Satin silver



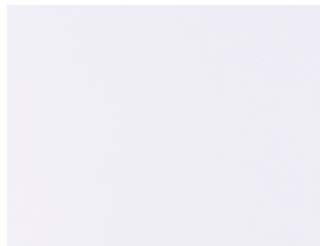
FSSPC - Matte silver



FCHP - Champagne



FDBZ - Dark bronze



FPF - Primer finish

PETITE 1" MULTI-APERTURE

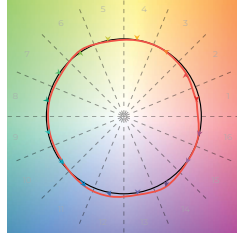
ROUND RECESSED WALL WASH

NEW CONSTRUCTION



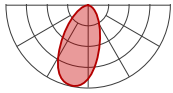
Color Quality

COLOR QUALITY - 3500K	
TM-30 Rr	91
TM-30 Ra	100
CRI	90+
R9	> 50



Photometrics

Values calculated based on 3500K and 90+ CRI for static white. The light distribution will vary depending on trim style and baffle finish. All values are per light.



WW - Wall Wash

STATIC WHITE

WATTAGE		7 W		10 W	
Trim style	Baffle finish	lm	lm/W	lm	lm/W
Trim	White	243	35	316	32
	Black, Champagne, Dark bronze	190	27	246	25
	Satin silver, Matte silver	217	31	281	28

MULTIPLIERS

Please follow the multiplier tables to ensure correct lumen value. CCT and CRI will change the lumen value.

CCT		CRI	
2200K	0.80	80+ CRI	1
2400K	0.87	90+ CRI	1
2700K	0.94	95+ CRI	0.77
3000K	0.98		
3500K	1		
4000K	1.05		
5000K	1.05		

SOLA

WATTAGE			10 W	
CCT	Trim style	Baffle finish	lm	lm/W
3000K	Trim	White	244	24
		Black, Champagne, Dark bronze	190	19
		Satin silver, Matte silver	213	21
2700K	Trim	White	244	24
		Black, Champagne, Dark bronze	190	19
		Satin silver, Matte silver	213	21

DUO

WATTAGE			7 W	
CCT	Trim style	Baffle finish	lm	lm/W
6000K	Trim	White	205	29
		Black, Champagne, Dark bronze	160	23
		Satin silver, Matte silver	179	26
5000K	Trim	White	205	29
		Black, Champagne, Dark bronze	160	23
		Satin silver, Matte silver	179	26
2700K	Trim	White	180	26
		Black, Champagne, Dark bronze	140	20
		Satin silver, Matte silver	157	22



PETITE 1" MULTI-APERTURE

ROUND RECESSED WALL WASH

NEW CONSTRUCTION



Technical Specifications

OPTIC

The CircaFlex™ Optic uses advanced beam-splitting technology to allow light to follow an intended optical path with maximal precision, minimal spread, and even distribution.

LIGHT SOURCE

Static white

Compact COB (Chip-On-Board) LED module, available in 2200K, 2400K, 2700K, 3000K, 3500K, 4000K, and 5000K with a choice of 80+ CRI, 90+ CRI, or 95+ CRI, with elevated R9 value for 90+ CRI and above. Color consistency is maintained to within 2 SDCM. All LEDs have been tested in accordance with IESNA LM-80-08 and the results have shown L80 lumen maintenance greater than 60,000 hours. Absolute product photometry is measured and presented in accordance with IESNA LM-79, unless otherwise indicated.

Chromawerx SOLA

Chromawerx SOLA is single-channel control that dims output while warming the color temperature in a pre-determined relationship. Two color temperature range options are offered: 3000K to 1800K, and 2700K to 1800K. A simple analog control adjusts a specially populated LED array to emulate the effect of dimming a filament source.

Chromawerx DUO

Chromawerx DUO offers a two-channel control system which uses analog or digital protocols for synchronous control of both cool to warm LED arrays - maintaining a CRI above 90. Two color temperature range options are offered: 6500K to 2700K, and 5000K to 2700K. The range of color DUO offers is useful for entraining circadian rhythms, stimulating alertness, and compensating for jet lag among other applications. The Chromawerx drivers are programmed to limit maximum light output and power usage across all color temperatures. When paired with DALI drivers (DDA/DDA8), color tuning follows a linear dimming curve.

ELECTRICAL

Unless otherwise specified, dimming down to 1%. At maximum driver load: efficiency>84%, PF>0.9, THD<20%. ELV and TRIAC dimming performance (including minimum dimming percentage) subject to dimmer selection.

Integral: 0-10V, ELV, TRIAC, eldoLED 1% ECOdrive 0-10V, eldoLED 0.1% SOLOdrive 0-10V, Lutron Hi-lume Premier 0.1% EcoSystem

Remote: 0-10V, ELV, TRIAC, Lutron Hi-lume 1% Eco, DALI, eldoLED 1% ECOdrive 0-10V, eldoLED 0.1% SOLOdrive 0-10V, Lutron Hi-lume Premier 0.1% EcoSystem, DMX, Lutron DALI-2 digital

Emergency battery option: Remotely-installed, long-life, high-temperature, maintenance-free, Bodine Lithium-Ion battery pack with self-test functionality, test switch and charge indicator. IOTA and Fulham options available upon request. Minimum of 90 minutes operation, and recharge time of 24 hours. For fixtures less than 10 W, the battery provides 6 W of emergency light output. For fixtures 10 W and over, the battery provides 10 W.

PoE

Depending on the PoE manufacturer selected, Lumenwerx will install the node in factory as either integral to the luminaire, or as a remote module. Factory programming of the PoE node may or may not enable the following functionalities: lumen package, DUO (tunable white), QUADRO (RGBW), emergency battery backup, and sensor integration. These must be addressed and evaluated on a case-by-case basis.

FINISH

Standard powder-coat paint available in matte white, matte black, satin silver, matte silver, champagne, dark bronze, and primer finish. Custom colors also available (provide RAL #). For the primer finish option, fixture must be turned off and the lens masked before applying paint.

CONSTRUCTION

Housing: For new construction, 20 gauge powder coated steel. 18 gauge galvanized steel junction box with ½" trade size knockouts. Adjustable standard 2" tall, flush mount, adjustable standard, adjustable commercial, and adjustable hat channel bar hangers are available as mounting options.

Baffle: Die-cast aluminum mounted with retaining spring clips

Heat sink: Die-cast aluminum

WEIGHT

	1 X 2	1 X 3
Integral	5.1 lbs - 2.3 kg	6.2 lbs - 2.8 kg
Remote	3.2 lbs - 1.4 kg	4.2 lbs - 1.9 kg

LENS



Wall Wash

ENVIRONMENT

Ambient temperature at fixture location shall be within 0°C/32°F - 25°C/77°F, indoor dry or damp as well as outdoor damp use (canopies or marquees).

PETITE 1" MULTI-APERTURE

ROUND RECESSED WALL WASH

NEW CONSTRUCTION



CERTIFICATIONS

ETL: Rated for indoor dry/damp locations. Conforms to UL Standard 1598 and certified to CAN/CSA Standard C22.2 No. 250.0.

Chicago Plenum: City of Chicago approved (CCEA) when specified with CP installation type option.

IC rated: Suitable for direct contact with insulation when specified with IC or CP installation type options.

WARRANTY

Lumenwerx provides a five-year limited warranty on electrical and mechanical performance of the luminaires, including the LED boards, drivers, and auxiliary electronics. Lumenwerx will repair or replace defective luminaires or components at our discretion, provided they have been installed and operated in accordance with our specifications. Other limitations apply, please refer to the full warranty on our website.