

PIVOT

TRACK - PENDANT



DESCRIPTION

Pivot is an architectural 48V linear magnetic track lighting system for pendant mounting. The Pendant Track is low voltage and accommodates the Pivot Track Modules. It possesses infinite run capabilities in segments of up to 8 feet with smooth transitions at the joint. It can also be branched out horizontally and vertically to create a multitude of shapes, patterns, and effects for various architectural applications. The Track is offered in different circuit and control channel variations.



Project: _____

Type: _____

Track

Example: PIVP-CR-9FT6IN(2X3FT-1X3FT6IN)-WIO2(SW-80CRI-750LMF-35K)-2FT4IN-NA-120V-D1-USC-1CICCU DI-NA-ACS-FTMB-BK-NA

A drawing of your pattern is required - anything from a line drawing to an architectural drawing. You can also use the grid on page 3 to sketch your layout.

| LUMINAIRE ID | TRACK TYPE | LUMINAIRE LENGTH ³ | INDIRECT OPTIC ⁴ | LINX ⁷ |
|-----------------------------|-------------------------------------------------------------------------------------------------------------------------------------------------------------------------------------------------------------------------------------------------------------------------------------------|-----------------------------------------------------------------------------------------------------------------------------------------------------------------------------------------------------------------------------------------------------------------------------------------------------------------------------------------------------------------------------------------------------------------------------------------|------------------------------------------------------------------------------------------------------------------------------------------------------------------------------------------------------------------------------------------------------------------------------------------------------------------------------------------------------------------------------------------------------------------------------------------------------------------------------------------------------------------------------------------------------------------------------------------------------------------------------|-------------------------------------------------------------------------------------------------------------------------------------------------------------------------------------------------------------------------------------------------|
| PIVP | | | | |
| PIVP - Pivot Pendant | CR ¹ - Continuous run PAT ² - Pattern ¹ A straight linear shape with no Linx. Two end caps are provided. ² A shape or pattern containing at least 1 Linx. End caps are provided as required based on your drawing. | ##FT##IN (#X#FT#IN-#X#FT#IN-...) - ##FT##IN : total nominal length of continuous run or pattern in feet and/or inches (3' or longer) #X : quantity of each section #FT#IN : nominal length of each section in feet and/or inches, specify between 3' and 8' ³ Consult the Maximum Track Wattage table on page 3 to determine the maximum load allowed per section. | WIO2 ^{5,6} - Widespread Indirect Optic BLA - Blank cover NA - None ⁴ By default, the track comes with no cover. If either light and/or a blank cover is required for the indirect side, select WIO2 and/or BLA. Specify the total length for each required indirect optic, and provide a drawing detailing the length and positioning of each indirect optic section. Or else select NA when nothing is required on the indirect side. ⁵ Minimum 2'; specify in 4" increments. ⁶ To specify see the indirect optic code and example below. | #LNH2 - 2-way horizontal Linx #LNH3 - 3-way horizontal Linx #LNH4 - 4-way horizontal Linx #LNV2 - 2-way vertical Linx NA - None ⁷ Specify quantity (#) for each required Linx. |

| VOLTAGE | DIMMING | TRACK CHANNEL | CONTROL CHANNEL ¹¹ |
|--------------------------------------------------------------------|----------------------------------------------------------------------------------------------------------------------------------------------------------------------------------------------------------------------------------------------------------------------------------------------------------------------------------------------------------------------------------------------------------|------------------------------------------------------------------|--------------------------------------------------------------------------------------------------------------------------------------------------------------------------------------------------------------------------------------------------------------------------------------------------------------------------------------------------------------------------------------------------------------------|
| 120V - 120V 277V - 277V UNV - 120V-277V | ND - Non-dimming D1 - 1% 0-10V DA ⁹ - DALI LECS ^{8,9,10} - Lutron EcoSystem ⁸ On-site commissioning is required. See page 7 for details. ⁹ Only available with USC, 1 circuit, and 1 control channel options (1CICCU DI, 1CICCU DI). ¹⁰ Comes with a control box that must be installed remotely. | USC - Unified single channel DUC - Dual channel | DIRECT 1CICCU DI - 1 circuit, 1 control channel (USC) 1C2CCDD - 1 circuit, 2 control channels (DUC channel 1 - DUC channel 2) 2C2CCDD - 2 circuits, 2 control channels (DUC channel 1 - DUC channel 2) ¹¹ For more details, please see page 5. |
| | | | DIRECT/INDIRECT 1CICCU DI - 1 circuit, 1 control channel (USC with indirect light) 2C2CCUDI - 2 circuits, 2 control channels (USC - indirect light) 2C2CCDDI - 2 circuits, 2 control channels (DUC channel 1 with indirect light - DUC channel 2) 2C3CCDDI - 2 circuits (DUC - indirect light), 3 control channels (DUC channel 1 - DUC channel 2 - indirect light) |

| EMERGENCY SECTION | MOUNTING | OUTSIDE FINISH ^{17,18} | INSIDE FINISH | OPTIONS |
|-------------------------------------------------------------------------------------------------------------|------------------------------------------------------------------------------------------------------------------------------------------------------------------------------------------------------------------------------------------------------------------------------------------------------------------------------------------------------------------------------------------------------------------------------------------------------------------------------------------------------------------------------------------------------------------------------------------------------------------|---------------------------------------------------------------------------------------------------------------------------------------------------------------------------------------------------------------------------------------|----------------------------------------|---------------------------------------------------------------------------------------------------------------------------------------------------------------------------------------------------------------------------------------------------------------------------------------------|
| EC ¹² - Emergency light section NA - None ¹² Consult factory. | ACS ¹³ - Aircraft cable, standard ACC ¹⁴ - Aircraft cable, custom THR ^{15,16} - Threaded rod ¹³ Standard aircraft cable option: canopies are white, Ø 5" for power canopy, Ø 3" for non-power. Power cord is black for black fixtures, and white for all other fixture finishes. Aircraft cable length is 36". ¹⁴ To specify a custom mounting, please refer to the mounting code on page 4 to see all available options. ¹⁵ Threaded rods provided by others. ¹⁶ Not available with WIO2. | FTMB - Textured matte black FTMW - Textured matte white CF# - Custom finish, specify RAL# ¹⁷ Linx finish will match outside finish. ¹⁸ See page 6 for more finish options. | BK - Black WH - White | FU120 - Fuse 120V FU277 - Fuse 277V CTB9 - T-bar caddy clip, 9/16" CTB15 - T-bar caddy clip, 15/16" CTC9 - Tegular caddy clip, 9/16" CTG15 - Tegular caddy clip, 15/16" CST - Screw slots caddy clip NA - None |

Indirect optic

Example: WIO2(SW-80CRI-750LMF-35K)

| INDIRECT OPTIC | INDIRECT LIGHT SOURCE | INDIRECT CRI | INDIRECT LUMEN PACKAGE | INDIRECT COLOR TEMP |
|-----------------------------------------|-------------------------------------------------------|------------------------------------------------------------------------------------------------------------------------------------------------------------|------------------------------------------------------------------------------------------------------------------------------------------------------------------------------------------|--------------------------------------------------------------------------------------|
| WIO2 | | | | |
| WIO2 - Widespread Indirect Optic | SW - Static white FS - Full spectrum | 80CRI ¹⁹ - 80 CRI 90CRI ¹⁹ - 90 CRI 95CRI - 95 CRI ¹⁹ Not available with full spectrum. | 500LMF - Low output 500 lm/ft 750LMF - Medium output 750 lm/ft 1000LMF ²⁰ - High output 1000 lm/ft ²⁰ Not available with 95 CRI. | 27K - 2700K 30K - 3000K 35K - 3500K 40K - 4000K |

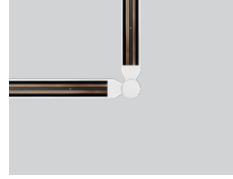
CURRENT LIMITER

The Pivot Track system is based on a low-voltage (48VDC) design that integrates the AC/DC conversion inside the body of the track (expect for Surface). The AC/DC 48V power supplies inside the fixture are inherently limited to specific wattages intended to provide at least 12 W/ft. Accordingly, if a track section is overloaded with modules, the system can never draw more than the rating of the power supply inside. In situations where the wattage of the modules installed exceeds the rated wattage of the integral power supply, flashing will typically occur to indicate an overload event.

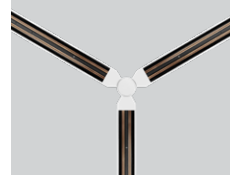
Track details

Use the grid below to sketch and label the layout of your Pivot track.

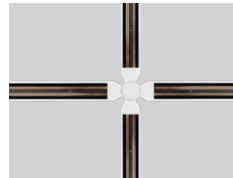
- Build your continuous run or pattern using track sections of 3' to 8'.
- The total wattage of all the modules installed in a track section must not exceed the maximum track wattage per section length (see table). Consult the Pivot Module spec sheet for the wattages of each module.
- Minimum length for the WIO2 indirect optic is 2', specify in 4" increments.
- Minimum angle for the rotation of the Linx is 60°.
- Track length is not field adjustable.



LNH2 - 2-way horizontal Linx



LNH3 - 3-way horizontal Linx



LNH4 - 4-way horizontal Linx



LNV2 - 2-way vertical Linx

Maximum Track Wattage *

at 3500K at 80 CRI

! Do not exceed the maximum wattage allowed per section of track.

| LENGTH | USC | DUC | |
|--------|------|-----------|-----------|
| | | Channel 1 | Channel 2 |
| 3FT | 36 W | 18 W | 18 W |
| 4FT | 48 W | 24 W | 24 W |
| 5FT | 60 W | 30 W | 30 W |
| 6FT | 72 W | 36 W | 36 W |
| 7FT | 84 W | 42 W | 42 W |
| 8FT | 96 W | 48 W | 48 W |

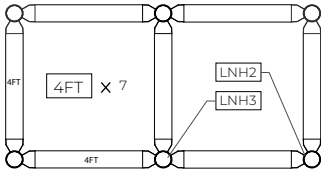
* To determine the maximum wattage allowed per section of track, multiply the length of your section by 12 W/ft.

Maximum Track Length Per Power Feed *

| VOLTAGE | LENGTH |
|---------|--------|
| 120V | 60FT |
| 277V | 140FT |

* Assuming 12 W/ft, direct-only track with 1 circuit (ICICCU or IC2CCUD). For other scenarios, consult factory.

Pattern example

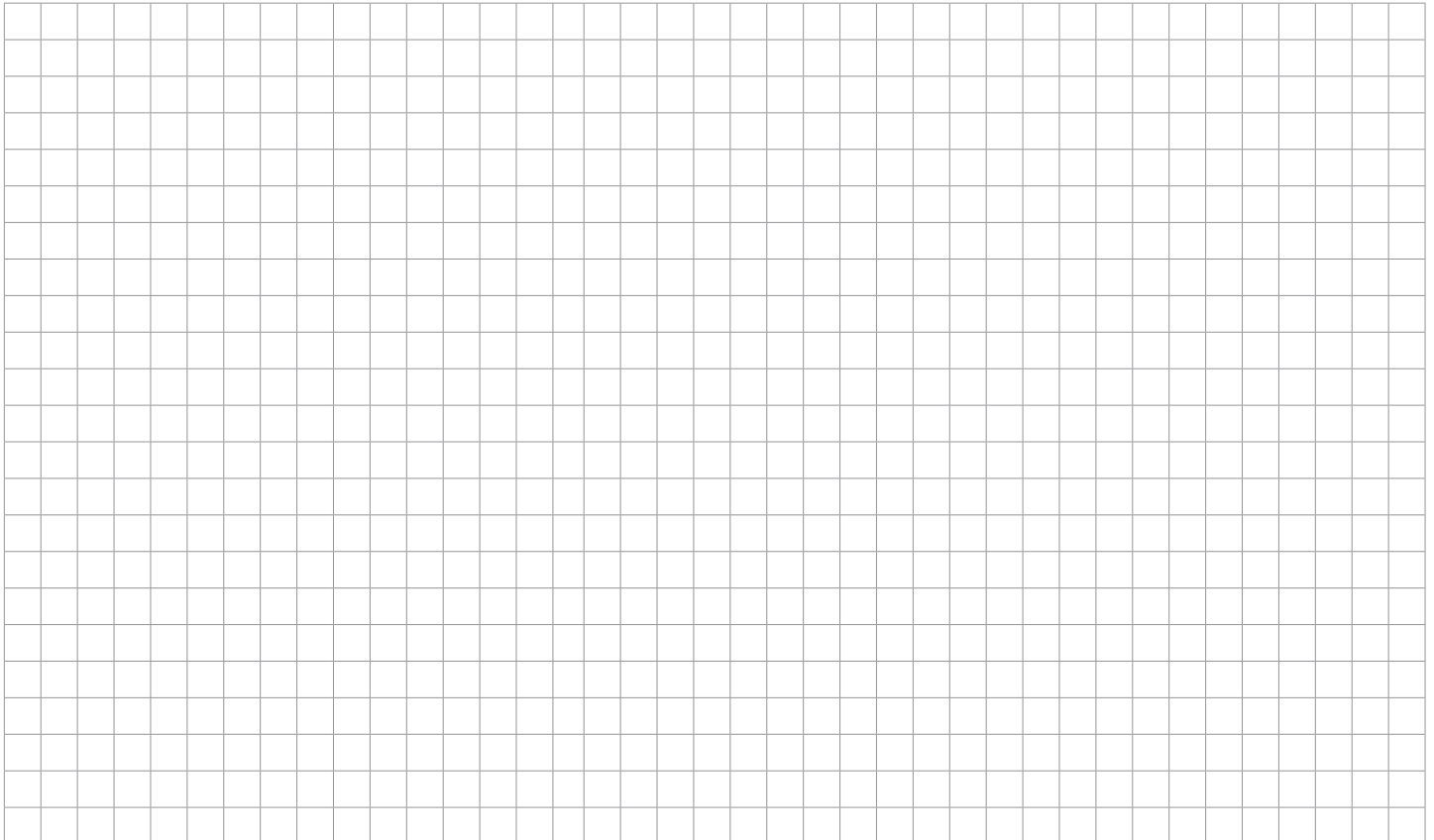


1. Specify the **TOTAL LUMINAIRE LENGTH** in feet and/or inches.

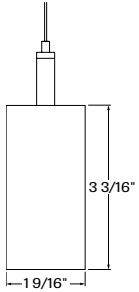
Example: 28FT(7X4FT)

2. Specify the quantity of each type of **LINX**.

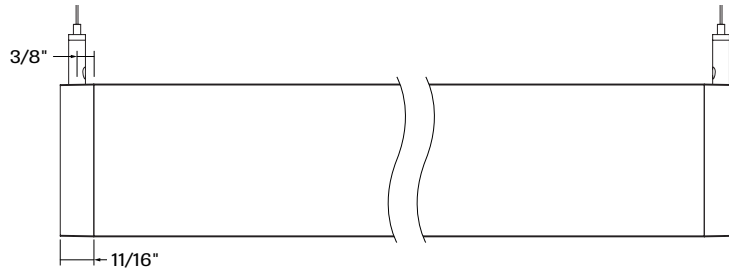
Example: 4LNH2-2LNH3



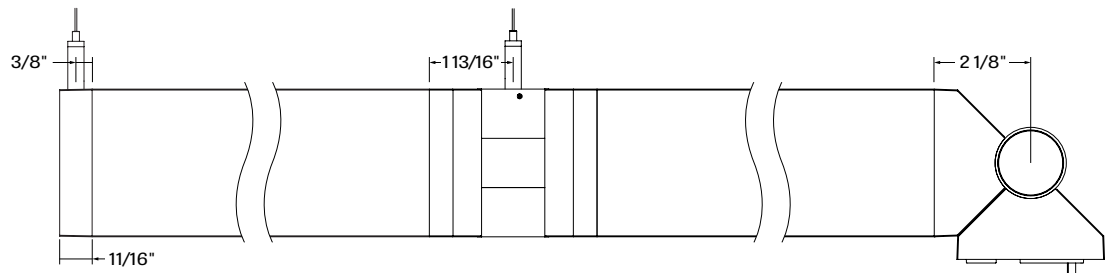
Dimensions



PIVP - Pivot Pendant

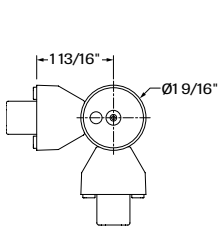


CR - Continuous run - with two end caps

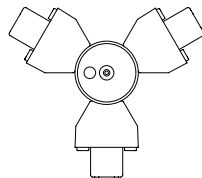


PAT - Pattern - shown with an end cap, 2-way horizontal Linx and 2-way vertical Linx

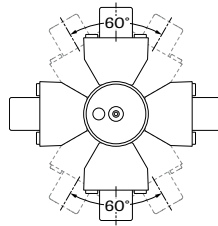
Linx



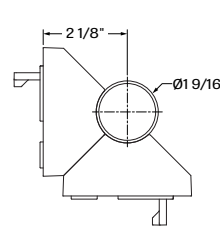
LNH2 - 2-way horizontal Linx



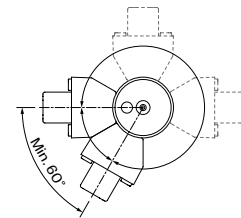
LNH3 - 3-way horizontal Linx



LNH4¹ - 4-way horizontal Linx
¹2 fixed and 2 movable.



LNV2 - 2-way vertical Linx



Custom Pendant Mounting Code

For a custom mounting, specify the options in the parentheses.

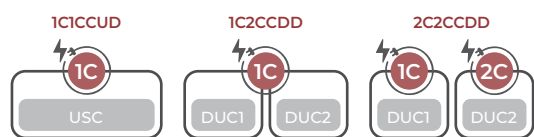
Example: ACC(3NPC-72IN-W-PCB-SLC)

| MOUNTING - AIRCRAFT CABLE, CUSTOM | | | | | |
|-----------------------------------|----------------------------------------------------------------------------|-----------------------------------------------------------------------------------------------------------------------------------------------------------------------------------------------------------------|----------------------------------------------------------------------------------------------------------------------|------------------------------------------|-----------------------------------------------------------------------------------------------------|
| ACC() | | | | | |
| | NON-POWER CANOPY SIZE | AIRCRAFT CABLE LENGTH | CANOPY FINISH | POWER CORD COLOR | OPTIONS |
| ACC | 3NPC - Ø 3" non-power canopy 5NPC - Ø 5" non-power canopy | 36IN - 36" 72IN - 72" 120IN - 120" #IN ¹ - Other lengths, specify in inches ¹ Maximum length is 288". For longer lengths, please consult factory. | W - Matte white AL - Aluminum B - Matte black CF# - Custom finish, specify RAL# | PCW - White PCB - Black | SEM - Seismic mounting SLC - Sloped ceiling for aircraft cable NA - None |

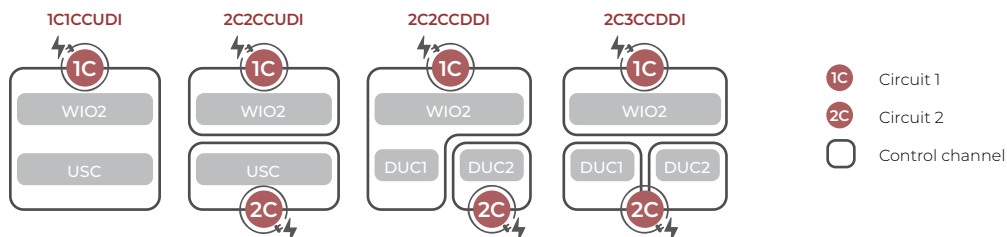
Circuit and channel specification

| TRACK CHANNEL | CONTROL CHANNEL | |
|------------------------------------------------------------------|-------------------------------------------------------------------------------------------------------------------------------------------------------------------------------------------------------------------------------------------|-------------------------------------------------------------------------------------------------------------------------------------------------------------------------------------------------------------------------------------------------------------------------------------------------------------------------------------------------------------------------------------------------------------------|
| USC - Unified single channel DUC - Dual channel | DIRECT 1C1CCUD - 1 circuit, 1 control channel (USC) 1C2CCDD - 1 circuit, 2 control channels (DUC channel 1 - DUC channel 2) 2C2CCDD - 2 circuits, 2 control channels (DUC channel 1 - DUC channel 2) | DIRECT/INDIRECT 1C1CCUDI - 1 circuit, 1 control channel (USC with indirect light) 2C2CCUDI - 2 circuits, 2 control channels (USC - indirect light) 2C2CCDDI - 2 circuits, 2 control channels (DUC channel 1 with indirect light - DUC channel 2) 2C3CCDDI - 2 circuits (DUC - indirect light), 3 control channels (DUC channel 1 - DUC channel 2 - indirect light) |

Direct



Direct/Indirect

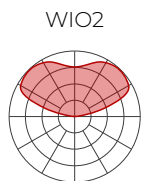


- 1C Circuit 1
- 2C Circuit 2
- Control channel

Photometrics

Values calculated based on a 4' fixture at 3500K and 80 CRI.

INDIRECT OPTIC



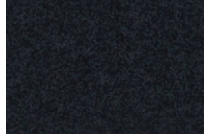
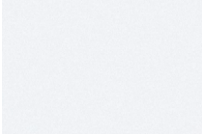
| LM/FT | W/FT | LM/W |
|-------|------|------|
| 500 | 3.6 | 139 |
| 750 | 5.6 | 134 |
| 1000 | 7.7 | 130 |

Multiplier - CCT/CRI

| CCT | WATTS | | LPW | |
|-------|--------|--------|--------|--------|
| | 80 CRI | 90 CRI | 80 CRI | 90 CRI |
| 2700K | 1.05 | 1.27 | 0.95 | 0.79 |
| 3000K | 1.02 | 1.23 | 0.98 | 0.81 |
| 3500K | 1.00 | 1.19 | 1.00 | 0.84 |
| 4000K | 1.00 | 1.19 | 1.00 | 0.84 |

Finishes

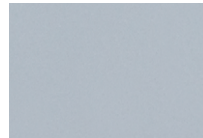
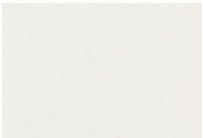
Standard



FTMW - Textured Matte White **FTMB** - Textured Matte Black

Custom

Neutrals



CRM - Cream

GRY - Gray

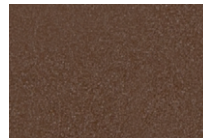
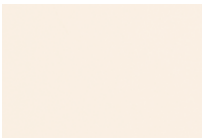
STG - Steel Gray

SAG - Sage Gray

MOG - Moss Gray

BLB - Black Blue

Designer



ALM - Almond

QRZ - Quartzite Texture

RST - Rust Fine Texture

GRB - Green Beige

YLW - Yellow

SLM - Salmon Pink



VIO - Pastel Violet

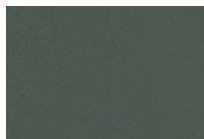
RED - Red

PRR - Purple Red

SMB - Storm Blue

DPB - Deep Blue

OCB - Ocean Blue



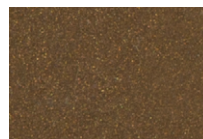
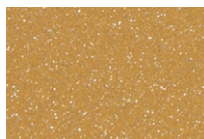
BLG - Blue Green

GNS - Green Smoke

MNG - Mint Green

LMG - Lime Green

Metallics



CHP - Champagne

GLD - Gold

DGD - Dark Gold

IRN - Iron Ore

CNY - Canyon

SBP - Sandblast Copper



SWD - Sandalwood

Some colors may have longer lead time.

Technical Specifications

INDIRECT OPTIC

Widespread Indirect Optics (WIO2)

A horizontal LED array with a widespread indirect micro prismatic optic that offers an impressive 160° spread. WIO2 creates an even illumination for smooth brightness on the ceiling that can achieve uniformity ratios of up to 2:1.

Uniformity [max/min]

Based on 18' continuous runs, in a 20' x 40' room, 10' wall height

| Mounting height from ceiling | Spacing (Center to center) | | |
|------------------------------|----------------------------|------|-----|
| | 8' | 10' | 12' |
| 12" | 5.5 | 10.0 | 9.0 |
| 18" | 3.5 | 6.0 | 6.0 |
| 24" | 2.5 | 4.0 | 4.5 |

Blank (BLA)

Blank covers can be specified to cover unlit sections of the indirect portion of the Pivot track. By default, the track comes with no cover. Blank covers are finished to match the outside color of the track.

LIGHT SOURCE

Static white

Custom array of mid-flux LEDs are mounted directly to the housing for optimal thermal performance. Available in 2700K, 3000K, 3500K, and 4000K with a minimum 80 CRI and an option for 90 CRI with elevated R9 value. Color consistency maintained to within 3 SDCM. LEDs operated at reduced drive current to optimize efficacy and lumen maintenance.

All LEDs have been tested in accordance with IESNA LM-80-08 and the results have shown L80 lumen maintenance greater than 60,000 hours. Absolute product photometry is measured and presented in accordance with IESNA LM-79, unless otherwise indicated.

Full spectrum

The full spectrum LED option offers improved color particularly in the cyan region that is beneficial in both healthcare and circadian lighting strategies. The cyan region in full spectrum LED is richer at the 480 nm range.

LUMINAIRE LENGTH

Pivot track is available as either as a continuous run (straight linear shape with no Linx) or as a pattern (shape or pattern containing at least 1 Linx). It is built using track sections of 3' to 8'. The total nominal length must be specified in the product code, as well as the quantity and nominal length of each section. Lengths can be ordered in 1 foot increments. The track length is not field adjustable.

All individual sections are joined together onsite using the joiner kits provided. Lumenwerx offers joiner kits that are extremely simple to work with in the field and result in a fixture that appears virtually seamless with no light leak at any connection.



ELECTRICAL

Direct

The Pivot track is powered by an integral (except for Surface) 48VDC, Class 2, SELV power supply with universal (120-277VAC) input. Rated lifetime of 50,000 hours at 50°C max. ambient (and 70°C max. case) temperature. At maximum driver load: Efficiency>90%, PF>0.9, THD<20%. The power supply is coupled to a proprietary dimming interface which allows one or both track channels to be controlled together or independently using a 0-10V or DALI signal. Both the power supply and the dimming interface can be serviced from below. For applications requiring Lutron Ecosystem control, a separate, remote interface can be provided to translate Ecosystem to 0-10V.

Indirect

Factory-set, adjustable output current LED driver with universal (120-277VAC) input. Dimmable from 100% to 1% with 0-10V dimming control. Rated life (90% survivorship) of 50,000 hours at 50°C max. ambient (and 70°C max. case) temperature. At maximum driver load: Efficiency>84%, PF>0.9, THD<20%. Other specifiable options include non-dimming, Lutron 5-Series EcoSystem, and DALI protocol drivers. All of our standard 0-10V drivers are NEMA 410 compliant.

DALI

A maximum of 64 DALI devices is permitted on a single DALI line. Please note that each Pivot track section consists of a minimum of 2 DALI devices with the possibility of up to 4 DALI devices depending on control channel and circuit selection. Please consult factory for additional details.

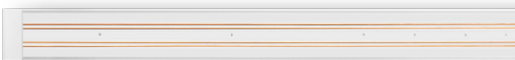
MOUNTING

Pendant fixtures can be mounted either with aircraft cable or with threaded rod. See page 4 for details.

FINISH

Outside: Standard powder-coat paint available in textured matte white and black. Custom colors are also available in over 30 colors.

Inside: White or black



CONSTRUCTION

Track housing: Extruded aluminum, up to 90% recycled content

Joining system: Die cast zinc

WIO2 reflector: Cold rolled steel die formed, 95% reflective matte white painted

WIO2 diffuser: Extruded acrylic

Blank cover: Extruded aluminum

End caps: Die cast aluminum

Hanger: Chromed griplock securely attached with spring steel hardware in end caps and/or joiners.

Aircraft cable suspension: Stainless steel aircraft cable 1/16" thick

WEIGHT

3': 4.6 lbs - 2.1 kg

4': 5.9 lbs - 2.7 kg

6': 8.4 lbs - 3.8 kg

8': 11 lbs - 5.0 kg

CERTIFICATION

ETL: Rated for indoor dry locations. Conforms to UL Standard 1574 and certified to CAN/CSA Standard C22.2 No. 250.0.

WARRANTY

Lumenwerx provides a five-year limited warranty of electrical and mechanical performance of the luminaires, including the LED boards, drivers, and auxiliary electronics. Lumenwerx will repair or replace defective luminaires or components at our discretion, provided they have been installed and operated in accordance with our specifications. Other limitations apply, please refer to the full warranty on our website.