

POP ECHOCORE ROUND

PENDANT

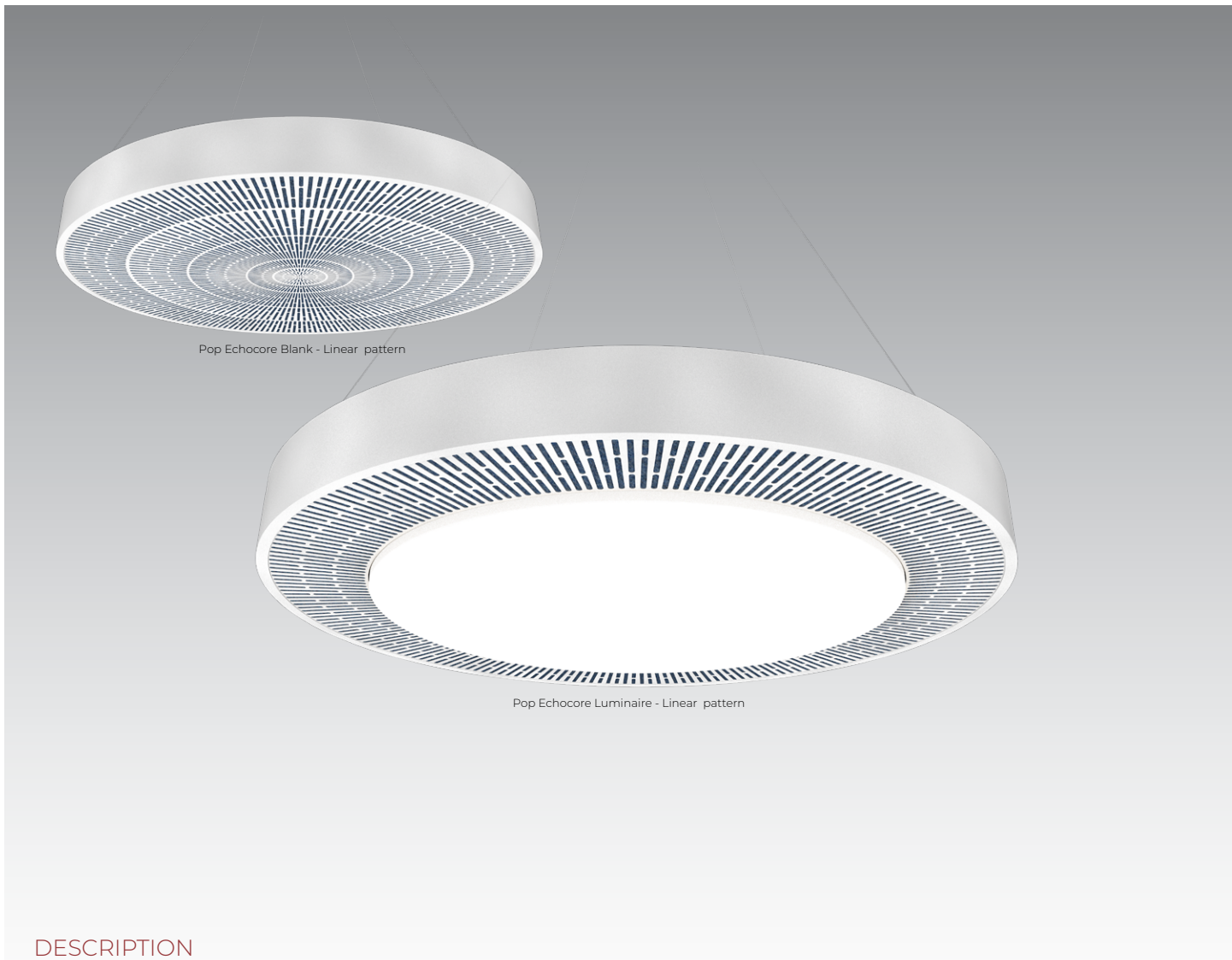
STATIC WHITE, FULL SPECTRUM

LUMENWERX



Project: _____

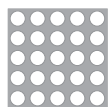
Type: _____



DESCRIPTION

Pop Echocore™ acoustic luminaires not only offer lens brightness uniformity enabled by our Unity Pointed (UP) technology, but they also reduce echo and reverberation in their immediate environment. When sound waves meet the lighting fixture, they pass through its aluminum lattice only to be trapped by its core of layered sound-absorbing material. Available in round and square models with pendant, surface, and recessed mounting options.

Patterns



Round



Square



Linear



Scallop



Cubic

POP ECHOCORE ROUND

PENDANT

STATIC WHITE, FULL SPECTRUM

LUMENWERX



Project: _____

Type: _____



Luminaire

Blank

Luminaire code

LUMINAIRE ID	SIZE	DISTRIBUTION	OPTIC	LENS POSITION	LIGHT SOURCE ¹
POECHROP			ULO		
POECHROP - Pop Echocore Round Pendant	24 - Ø 2ft 36 - Ø 3ft 48 - Ø 4ft	D1 ¹ - Direct/Indirect D - Direct	ULO - Uniform Lambertian Optic	FH - Flush 0.5D - 1/2" drop 1D - 1" drop	SW - Static white FS - Full spectrum ¹ Chromawerx Sola, Duo, and Quadro also available. Consult factory.

CRI	DIRECT LUMEN PACKAGE			INDIRECT LUMEN PACKAGE <small>Specify NA for Direct fixture.</small>			COLOR TEMP.	VOLTAGE	DRIVER ⁷	ELECTRICAL		
80 ² - 80 CRI 90 ² - 90 CRI 95 ³ - 95 CRI	24	Low 750	Med ⁴ 900	High ⁴ 1100	24	Low 750	Med ⁴ 900	High ⁴ 1100	27 - 2700K 30 - 3000K 35 - 3500K 40 - 4000K	120 - 120V 277 - 277V UNV - 120V-277V 347 ^{5,6} - 347V	D1 - 1% 0-10V DA ⁸ - DALI LTEA2W - Lutron 1% - 2 wire FP 120V LDE1 ⁸ - Lutron Hi-Lume 1% Eco ELD1 - eldoLED 1% ECOdrive 0-10V ELDO - eldoLED 0.1% SOLOdrive 0-10V	1C - 1 circuit 2C ⁹ - 2 circuits ⁹ Available for Direct/Indirect only. Separate direct and indirect circuits.
² Not available with full spectrum. ³ Not available with static white. ⁴ Not available with full spectrum.				NA - Not applicable					⁵ Available with D1 only. ⁶ Driver is remote.	⁷ PoE (Power-over-Ethernet) compatible. Consult factory for details. ⁸ On-site commissioning is required.		

MOUNTING ¹⁰	FIXTURE FINISH	PATTERN	PATTERN FINISH	FELT COLOR	OPTIONS
ACS - Aircraft cable, standard ACC() - Aircraft cable, custom ¹⁰ See page 3 for ordering details.	W - Matte white AL - Aluminum B - Matte black CF# - Custom finish, specify RAL# See page 4 for more finish options.	<u>Standard</u> ROU - Round SQU - Square LIN - Linear <u>Premium</u> SCP - Scallop CBC - Cubic	W - Matte white AL - Aluminum B - Matte black CF# - Custom finish, specify RAL# See page 4 for more finish options.	STANDARD COLORS FWN LVN FON LFN ION CFN TBN PMN MDN FGN PREMIUM COLORS ¹¹ PKN CDN IVN BHN OGN LCN SLN CFN LNN SYN CNN GRN LMN BLN GHN MON EGN NVN CLN ESN	FU120 - Fuse 120V FU277 - Fuse 277V NA - None
				¹¹ Please consult factory for more color options. Lead time may vary.	

Blank code

LUMINAIRE ID	SIZE	MOUNTING ¹²	FIXTURE FINISH	PATTERN	PATTERN FINISH	FELT COLOR
POECHROBP						
POECHROBP - Pop Echocore Round Blank Pendant	24 - Ø 2ft 36 - Ø 3ft 48 - Ø 4ft	ACNP - Aircraft cable for non-powered mounting, standard ACC() - Aircraft cable, custom ¹² See page 3 for ordering details.	W - Matte white AL - Aluminum B - Matte black CF# - Custom finish, specify RAL# See page 4 for more finish options.	<u>Standard</u> ROU - Round SQU - Square LIN - Linear <u>Premium</u> SCP - Scallop CBC - Cubic	W - Matte white AL - Aluminum B - Matte black CF# - Custom finish, specify RAL# See page 4 for more finish options.	STANDARD COLORS FWN LVN FON LFN ION CFN TBN PMN MDN FGN PREMIUM COLORS ¹³ PKN CDN IVN BHN OGN LCN SLN CFN LNN SYN CNN GRN LMN BLN GHN MON EGN NVN CLN ESN
						¹³ Please consult factory for more color options. Lead time may vary.

POP ECHOCORE ROUND

LUMENWERX

PENDANT

STATIC WHITE, FULL SPECTRUM

Pendant Mounting Code

Standard

For a standard mounting, please refer to the information below.

MOUNTING	
ACS - Aircraft cable, standard	ACNP - Aircraft cable for non-powered mounting, standard
Ø5" for power canopy Canopy is white Power cord is white for all fixture finishes (except black fixture is black power cord) Aircraft cable length is 36"	Ø3" for non-power Canopy is white Aircraft cable length is 36"

Custom

Aircraft Cable

For a custom mounting, specify the options in the parentheses.

Example: ACC(72-W-PCB)

MOUNTING			
ACC()			
	AIRCRAFT CABLE LENGTH	CANOPY FINISH	POWER CORD COLOR
ACC	36 - 36" 72 - 72" 120 - 120" # ¹ - Other lengths, specify in inches ¹ Maximum length is 288". For longer lengths, please consult factory.	W - White AL - Aluminum B - Black CF# - Custom finish, specify RAL#	PCW - White PCB - Black NA ² - None ² For Blank fixture.

POP ECHOCORE ROUND

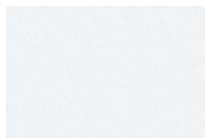
LUMENWERX

PENDANT

STATIC WHITE, FULL SPECTRUM

Fixture/Pattern Finishes

Standard



W - Matte White



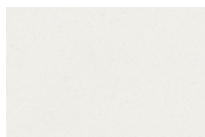
AL - Aluminum



B - Matte Black

Custom

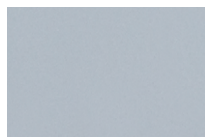
Neutrals



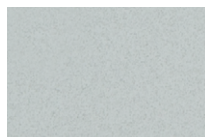
CRM - Cream



GRY - Gray



STG - Steel Gray



SAG - Sage Gray

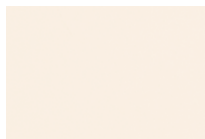


MOG - Moss Gray

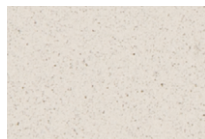


BLB - Black Blue

Designer



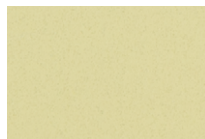
ALM - Almond



QRZ - Quartzite Texture



RST - Rust Fine Texture



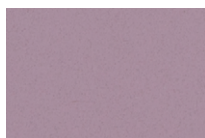
GRB - Green Beige



YLW - Yellow



SLM - Salmon Pink



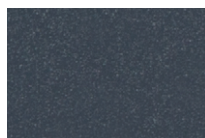
VIO - Pastel Violet



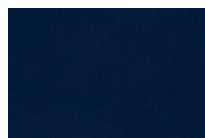
RED - Red



PRR - Purple Red



SMB - Storm Blue



DPB - Deep Blue



OCB - Ocean Blue



BLG - Blue Green



GNS - Green Smoke



MNG - Mint Green



LMG - Lime Green

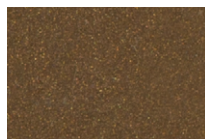
Metallics



SND - Sand



GLD - Gold



DGD - Dark Gold



IRN - Iron Ore



CNY - Canyon



SBP - Sandblast Copper



SWD - Sandalwood

POP ECHOCORE ROUND

LUMENWERX

PENDANT

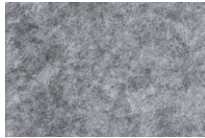
STATIC WHITE, FULL SPECTRUM

Felt Finishes

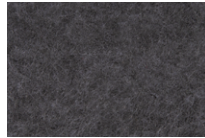
Standard Color Options



FWN - FROST WHITE



FON - FOG



ION - IRON



TBN - TRUE BLACK



MDN - MIDNIGHT BLUE



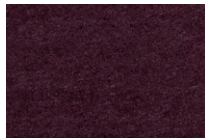
LVN - LAVENDER



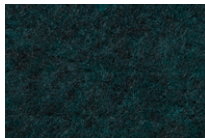
LEN - LATTE



CYN - CHERRY

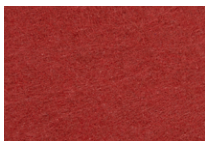


PMN - PLUM



FGN - FOREST GREEN

Premium Color Options*



PKN - PAPIKA



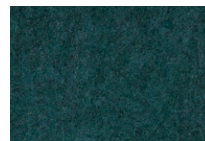
OGN - ORANGE



LNN - LEMON



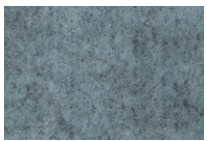
LMN - LIME



EGN - EVERGREEN



CDN - CLOUDY



LCN - LICHEN



SYN - SKY



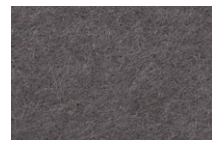
BLN - BLUEBERRY



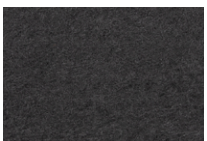
NVN - NAVY



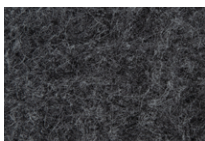
IVN - IVORY



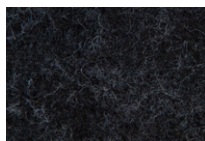
SLN - STEEL



CNN - CARBON



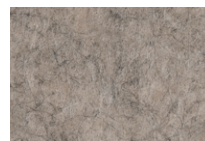
GHN - GRAPHITE



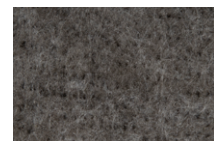
CLN - CHARCOAL



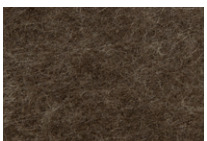
BHN - BLUSH



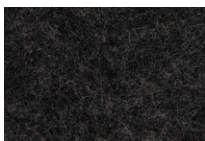
CFN - CAFÉ



GRN - GREIGE



MON - MOCHA



ESN - ESPRESSO

*Please consult factory for more color options.

*Lead time may vary.

POP ECHOCORE ROUND

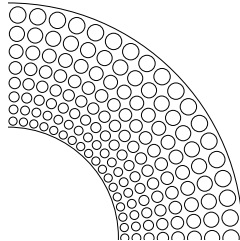
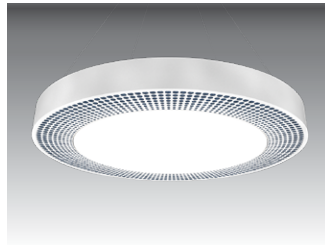
PENDANT

STATIC WHITE, FULL SPECTRUM

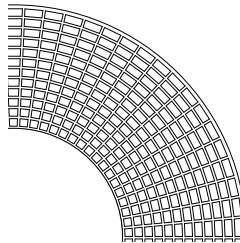
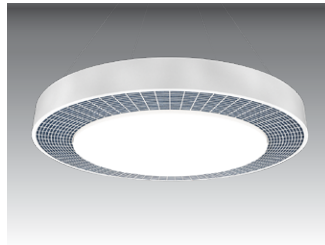
LUMENWERX

Fixture Patterns

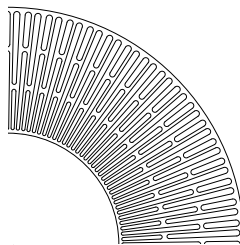
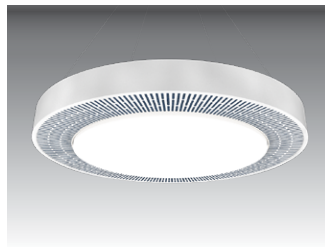
Luminaire



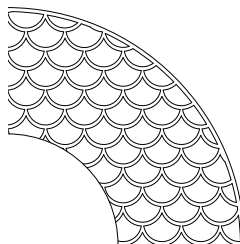
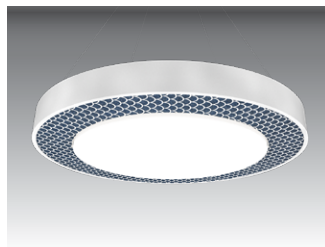
ROU - ROUND



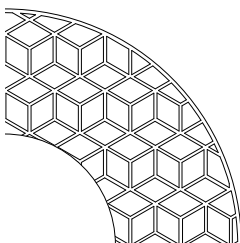
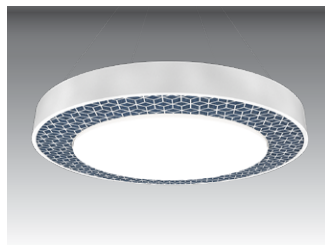
SQU - SQUARE



LIN - LINEAR

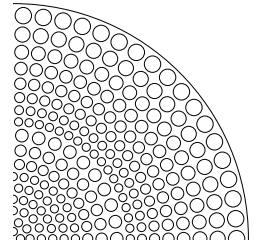


SCP - SCALLOP

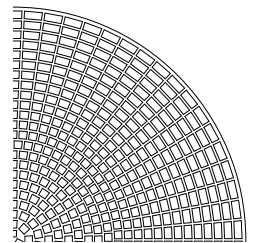
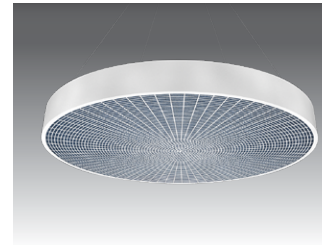


CBC - CUBIC

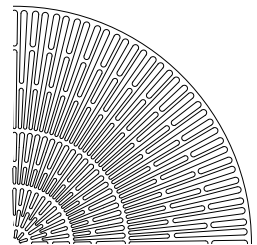
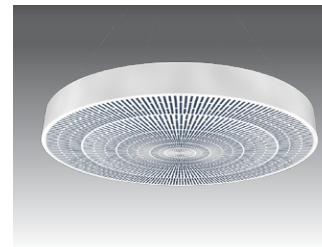
Blank



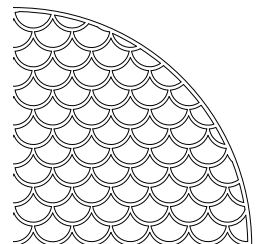
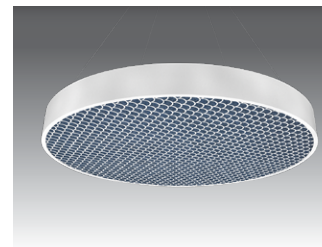
ROU - ROUND



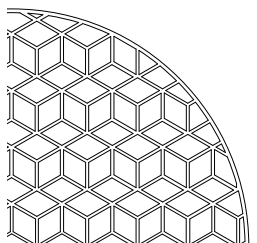
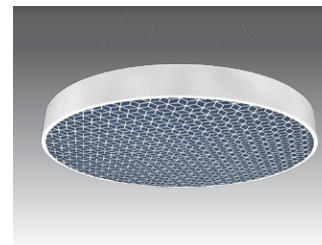
SQU - SQUARE



LIN - LINEAR



SCP - SCALLOP



CBC - CUBIC

POP ECHOCORE ROUND

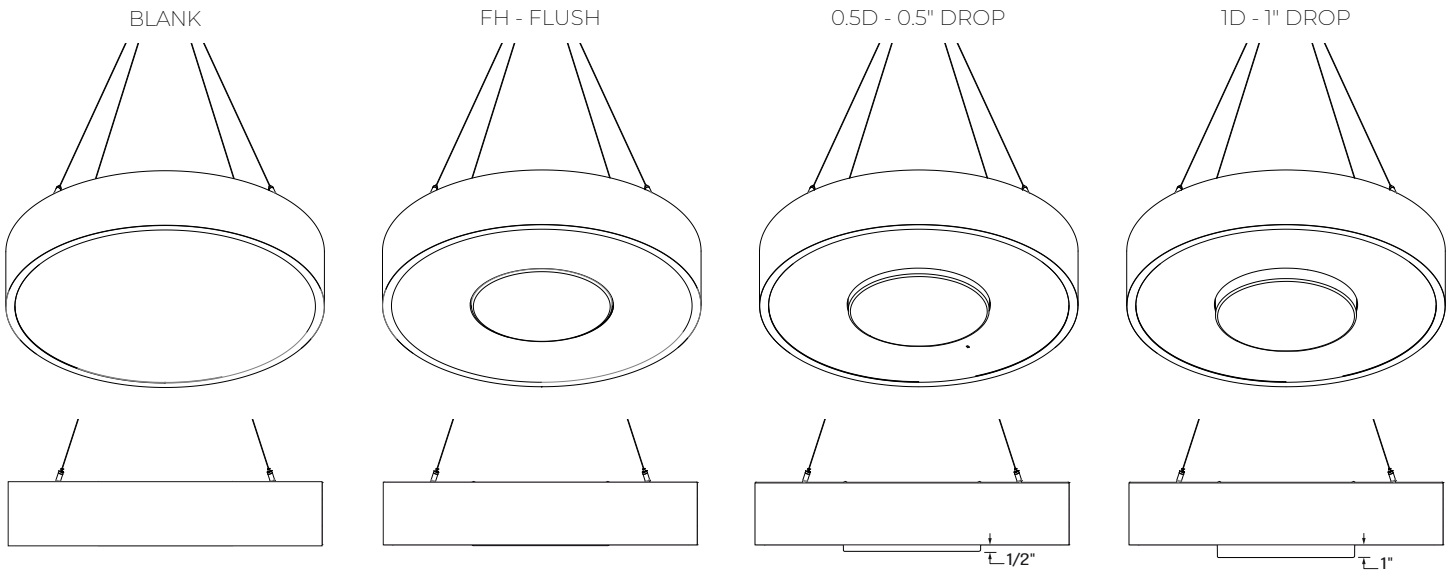
LUMENWERX

PENDANT

STATIC WHITE, FULL SPECTRUM

Dimensions

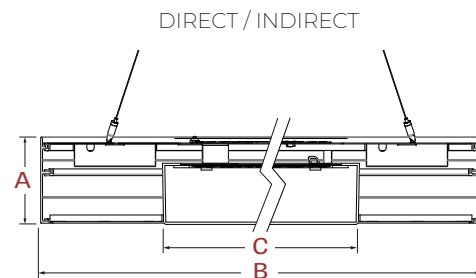
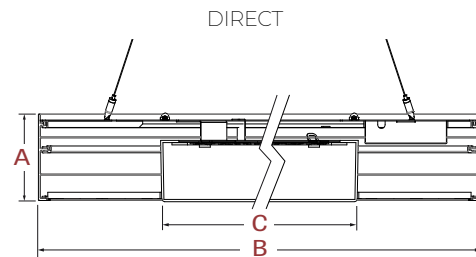
Lens position



Section view

Fixture Dimensions

FIXTURE SIZE	A BODY HEIGHT	B BODY DIAMETER	C DIRECT LENS DIAMETER
24		24 5/16	10 3/4
36	4 3/4	36 5/16	22 3/4
48		48 5/16	34 3/4



POP ECHOCORE ROUND

LUMENWERX

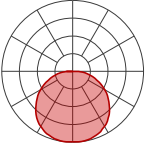
PENDANT

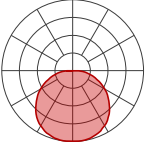
STATIC WHITE, FULL SPECTRUM

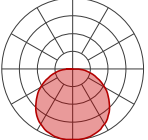
Photometrics

Delivered lumens at 35K at 80 CRI.

DIRECT OPTICS

24"	LUMEN OUTPUT	INPUT WATTS	LPW
	750	7.5	98
	900	9.5	96
	1100	11.5	97

36"	LUMEN OUTPUT	INPUT WATTS	LPW
	2500	23.5	106
	3500	34.5	102
	4500	46	98

48"	LUMEN OUTPUT	INPUT WATTS	LPW
	4000	37	108
	5500	52	106
	8000	78.5	102

INDIRECT OPTICS

24"	LUMEN OUTPUT	INPUT WATTS	LPW
	750	5.4	139
	900	6.7	135
	1100	8.5	130

36"	LUMEN OUTPUT	INPUT WATTS	LPW
	2500	17.8	140
	3500	26.3	133
	4500	35.4	127

48"	LUMEN OUTPUT	INPUT WATTS	LPW
	4000	30.8	130
	5500	45.5	121
	8000	72.1	111

MULTIPLIER

CRI and drop lenses for Direct and Indirect photometric tables.

Multiplier - CCT/CRI

CCT (K)	Watts		LPW	
	CRI80	CRI90	CRI80	CRI90
2700	1.05	1.26	0.95	0.79
3000	1.01	1.23	0.99	0.81
3500	1.00	1.20	1.00	0.84
4000	1.00	1.17	1.00	0.85

Multiplier - Drop Lens

DIRECT LENS	WATTS	LPW
Flush Lens	1.00	1.00
Drop Lens 0.5"	0.86	1.16
Drop Lens 1.0"	0.84	1.19

DIRECT/INDIRECT - LPW CALCULATION EXAMPLE

For Direct/Indirect performance values, follow the below formula.

$$\frac{\left(\frac{\text{DIRECT LUMEN OUTPUT}}{\text{DIRECT INPUT WATTS}} + \frac{\text{INDIRECT LUMEN OUTPUT}}{\text{INDIRECT INPUT WATTS}} \right)}{\left(\frac{\text{DIRECT LUMEN OUTPUT}}{\text{DIRECT INPUT WATTS}} + \frac{\text{INDIRECT LUMEN OUTPUT}}{\text{INDIRECT INPUT WATTS}} \right)} = \text{LPW}$$

POP ECHOCORE ROUND

LUMENWERX

PENDANT

STATIC WHITE, FULL SPECTRUM

ACOUSTIC CALCULATOR

Using the Lumenwerx Acoustix Value Calculator table, you can determine the number of acoustic luminaires required in a space by fixture type. We have three levels of recommended sound reduction: good, better, and best. Choosing one of these options will reduce the sound accordingly. The best option indicates the best acoustic improvement. Calculations are based on a standard ceiling height of 9 feet.



- ① Calculate the square feet of your room (L x W).
- ② Choose the level of acoustical improvement you are looking for, and find the corresponding value based on your room dimension and luminaire configuration.

% in reduction in reverberation time		
😊	GOOD	25%
😊😊	BETTER	40%
😊😊😊	BEST	50%

SIZE	Room dimensions under 300 sq ft			Room dimensions over 300 sq ft		
	GOOD 😊	BETTER 😊😊	BEST 😊😊😊	GOOD 😊	BETTER 😊😊	BEST 😊😊😊
LUMINAIRE						
24 IN	19	11	8	29	16	13
36 IN	31	18	14	48	27	21
48 IN	44	25	19	68	38	30
BLANK						
24 IN	25	14	11	39	22	17
36 IN	58	32	25	89	50	39
48 IN	105	59	46	163	91	72

- ③ Use the Lumenwerx Acoustix Value Formula to determine the number of luminaires needed in the room.

$$\text{Square feet} \div \text{Value} = \text{Number of luminaires}$$

Example:

Luminaire: Pop Echocore Round Surface 36 IN
Room square feet: L: 20 ft x W: 18 ft = 360 sq ft
Desired acoustical improvement: Better = 27
Number of luminaires needed in the room: $360 \div 27 = 14$ luminaires

NOTES:

- You can mix lit and blank fixtures.
- Lumenwerx acoustic calculators were developed to act as a guide. For precise acoustic performance in a space, please consult an acoustician.

POP ECHOCORE ROUND

PENDANT

STATIC WHITE, FULL SPECTRUM

LUMENWERX

Technical Specifications

OPTIC

Uniform Efficiency Lambertian Optic (ULO)

Made of formed impact modified white PMMA, the optic provides an even light distribution with up to 88% transmission. Its unique enclosed shell design protects LEDs against Electrostatic Discharge and dust while its back surface project a soft glow on the mounting surface.

LIGHT SOURCE

Custom array of mid-flux LEDs are mounted directly to the housing for optimal thermal performance. Available in 2700K, 3000K, 3500K and 4000K with a minimum 80 CRI and an option for 90 CRI and, 95 CRI with elevated R9 value. Color consistency maintained to within 3 SDCM. LEDs operated at reduced drive current to optimize efficacy and lumen maintenance. All LEDs have been tested in accordance with IESNA LM-80-08 and the results have shown L80 lumen maintenance greater than 60,000 hours. Absolute product photometry is measured and presented in accordance with IESNA LM-79, unless otherwise indicated. Optional full spectrum LEDs can be incorporated in the fixture to increase Cyanosis Observation Index (COI) and assist in regulating circadian rhythms.



WELL for Light - The WELL building standard focuses on light quality in several features. There are three categories that are fully attributed to the construction and features of a luminaire. In WELL V1, it's Feature 54 Circadian Lighting, Feature 55 Glare Control, and Feature 58 Color Quality. In WELL V2, it's Feature L03 Circadian Lighting, Feature L04 Glare Control, and Feature L07 Electric Light Quality.

This fixture meets Features:

- Feature 54 or L03 when full spectrum is selected
- Feature 55 or L04 meets WELL glare category (c-d)
- Feature 58 or L07 when 90 CRI or above is selected

All LED drivers used at Lumenwerx are deemed to have a low risk level of flicker, of 5 % or less below 90Hz operational as defined by IEEE standard 1789-2015 LED.



WELL for Sound - This luminaire is recommended for use as an acoustical absorption surface to limit reverberation times (RT) in a given space. This luminaire contributes to noise reduction and vibration dampening to promote focus and concentration. Reverberation needs to be calculated in each space based on the materials used.



WELL for Mind -This luminaire meets WELL for mind as it is a human centric luminaire offering quality light, excellent color, smooth optics, and a sound diminishing element. If any of these features are incorporated in a luminaire, it can improve the ability to focus, concentrate, and persist longer on a given task. This fixture harmoniously operates in a space to assist the mind.

For more information please contact well@lumenwerx.com.

ELECTRICAL

Factory-set, adjustable output current LED driver with universal (120-277VAC) input. Dimmable from 100% to 1% with 0-10V dimming control. Rated life (90% survivorship) of 50,000 hours at 50°C max. ambient (and 70°C max. case) temperature. At maximum driver load: Efficiency>84%, PF>0.9, THD<20%. Other specifiable options include Lutron Hi-Lume 1% (specify 2-wire, or Ecosystem Dim-to-Off), eldoLED 1% ECODrive 0-10V, eldoLED 0.1% SOLOdrive 0-10V, and DALI protocol drivers. All of our standard 0-10V drivers are NEMA 410 compliant.

PoE

Depending on the PoE manufacturer selected, Lumenwerx will install the node in factory as either integral to the luminaire or as a remote module. Factory programming of the PoE node may or may not enable the following functionalities: lumen package, Duo (tunable white) emergency battery backup, and sensor integration. These must be addressed and evaluated on a case-by-case basis.

MOUNTING OPTIONS

Fixtures can be pendant-mounted, using aircraft cables, or stem-mounted. Unless otherwise specified, Lumenwerx provides the following hardware:

Standard aircraft cable option (ACS) - Canopies are white, Ø5" for power canopy, Ø3" for non-power. Power cord is black for black fixtures, and white for all other fixture finishes. Aircraft cable length is 36"

FINISH

Interior - 95%, reflective, matte white powder coating

Exterior - Side trim is offered in a range of vibrant color powder coating.

ACOUSTIC FINISH

Material is 100% polyester containing up to 50% of recycled plastic bottles (PET) with an ASTM E-84 Class A fire rating and is moisture resistant.

CARE

Remove dust and debris with a clean, dry, soft, lint-free cloth, or vacuum.

POP ECHOCORE ROUND

PENDANT

STATIC WHITE, FULL SPECTRUM

LUMENWERX

CONSTRUCTION

Housing - Rolled and seamlessly welded aluminum extrusion 0.125" thick

Interior brackets - Die formed cold rolled sheet steel 18 gauge thick

Reflectors - Cold rolled steel 0.0246" thick precisely die formed, 95% reflective matte white painted

Lens - Uniform Lambertian Optic, thermoformed impact-modified acrylic, completely enclosed

Perforated panel - Die cut aluminum panel (18 gauge aluminum sheet)

Hanger - Chromed Griplock securely attached with spring steel hardware in end caps and/or joiners

Aircraft cable suspension - 7x7 braids aluminum aircraft cable 0.06" thick

WEIGHT

Size	Luminaire	Blank
24 IN	28.66 lbs - 13 kg	24.25 lbs - 11 kg
36 IN	42.99 lbs - 19.5 kg	37.48 lbs - 17 kg
48 IN	57.32 lbs - 26 kg	52.91 lbs - 24 kg

ENVIRONMENT

Ambient temperature at fixture location shall be within 0°C/32°F - 25°C/77°F, indoor dry or damp as well as outdoor damp use (canopies or marquees).

CERTIFICATION

ETL - Rated for Indoor Dry/Damp locations. Conforms to UL Standard 1598 and certified to CAN/CSA Standard C22.2 No. 250.0.

WARRANTY

Lumenwerx provides a five-year limited warranty of electrical and mechanical performance of the luminaires, including the LED boards, drivers, and auxiliary electronics. Lumenwerx will repair or replace defective luminaires or components at our discretion, provided they have been installed and operated in accordance with our specifications. Other limitations apply, please refer to the full warranty on our website.