

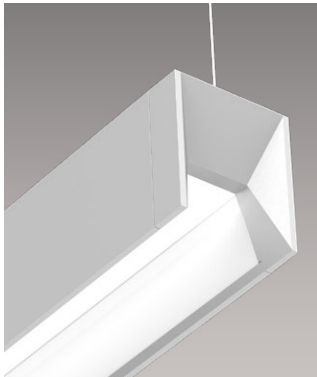
# SELKA

PENDANT  
DIRECT/INDIRECT, DIRECT

# LUMENWERX

Project: \_\_\_\_\_

Type: \_\_\_\_\_



High-Efficiency Lambertian Optic



Parabolic Louver

## DESCRIPTION

With angular end caps, deep interior channel, and pleasing aspect ratio, Selka presents a crisp, refreshing style. Widespread upright, comfortable downlight, high efficacy, and generous light output all make Selka eminently practical. Selka offers two distinctive downlight options: a regressed High-Efficiency Lambertian Optic and regressed parabolic louvers, in either specular or matte finish. Both options combine visual comfort with good cut off and a soft downlight distribution. Selka can be installed as discrete luminaires or continuous runs.

**SENSORS**  
For latest  
information  
on sensors,  
[click here.](#)



## Order Guide

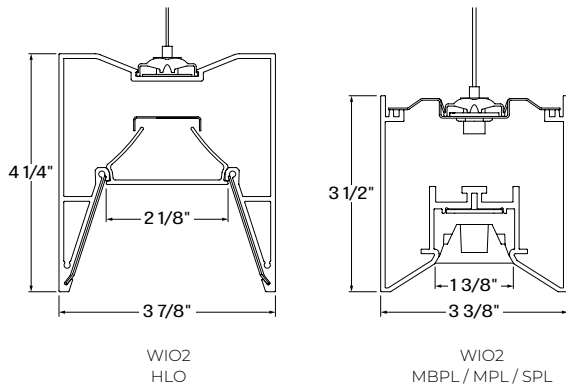
LUMINAIRE ID	DISTRIBUTION	DIRECT OPTIC	INDIRECT OPTIC Specify NA for Direct fixture	LIGHT SOURCE	CRI
<b>SELP</b>				<b>SW</b>	
<b>SELP</b> - Selka Pendant	<b>DI</b> - Direct/Indirect <b>D</b> - Direct	<b>MBPL</b> - Matte Black Parabolic Louver <b>MPL</b> - Matte Parabolic Louver <b>SPL</b> - Specular Parabolic Louver <b>HLO</b> - High-Efficiency Lambertian Optic	<b>WIO2</b> - Widespread Indirect Optic <b>NA</b> - Not applicable	<b>SW</b> - Static white	<b>80CRI</b> - 80 CRI <b>90CRI</b> - 90 CRI

DIRECT LUMEN PACKAGE	INDIRECT LUMEN PACKAGE Specify NA for Direct fixture	COLOR TEMP.	LUMINAIRE LENGTH	VOLTAGE	DRIVER <sup>3</sup>
<b>500LMF</b> - Low output 500 lm/ft <b>750LMF</b> - Medium output 750 lm/ft <b>1000LMF</b> <sup>1</sup> - High output 1000 lm/ft <sup>1</sup> Not available with MBPL optic.	<b>350LMF</b> - Eco low output 350 lm/ft <b>500LMF</b> - Low output 500 lm/ft <b>750LMF</b> - Medium output 750 lm/ft <b>1000LMF</b> - High output 1000 lm/ft <b>NA</b> - Not applicable	<b>27K</b> - 2700K <b>30K</b> - 3000K <b>35K</b> - 3500K <b>40K</b> - 4000K	<b>#FT</b> - Specify nominal length (#) in 1 foot increments  <b>Standard nominal lengths:</b> Single units: 4' to 12' Continuous runs: lengths over 12'	<b>120V</b> - 120V <b>277V</b> - 277V <b>UNV</b> - 120V-277V <b>347V</b> <sup>2</sup> - 347V <sup>2</sup> Available with DI driver only.	<b>D1</b> - 1% 0-10V <b>DA</b> <sup>4</sup> - DALI <b>LTEA2W</b> <sup>5</sup> - Lutron 1% - 2 wire FP 120V <b>LDE1</b> <sup>4</sup> - Lutron Hi-lume 1% Eco <sup>3</sup> PoE (Power-over-Ethernet) compatible. Consult factory for details. <sup>4</sup> On-site commissioning is required. <sup>5</sup> Available with 120V only.

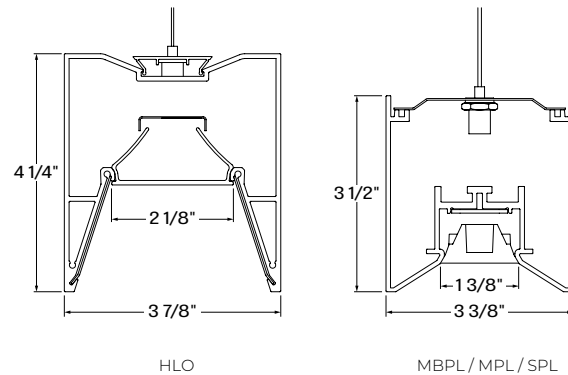
ELECTRICAL	ELECTRICAL SECTIONS (optional) <sup>10,11</sup>	MOUNTING <sup>16</sup>	FINISH	OPTIONS
<b>1C</b> - 1 circuit <b>2C</b> <sup>6</sup> - 2 circuits <b>#MC</b> <sup>7</sup> - Multi circuit <b>EC</b> - Emergency-powered fixture <b>NL</b> - Night light fixture <b>DL</b> - Daylight fixture <b>GTD</b> <sup>8,9</sup> - Generator transfer device fixture <sup>6</sup> Available for Direct/Indirect only. Separate direct and indirect circuits. <sup>7</sup> Specify total number of circuits (#), including any required for electrical section options. Provide drawing or layout specifications. Minimum 4' section per circuit. <sup>8</sup> Minimum 4' fixture. <sup>9</sup> Not available with 347V.	<b>#EC##</b> <sup>12</sup> - Emergency-powered section <b>#NL##</b> <sup>12</sup> - Night light section <b>#DL##</b> <sup>12</sup> - Daylight section <b>#GTD##</b> <sup>12,13,14</sup> - Generator transfer device section <b>#EMB</b> <sup>14,15</sup> - Emergency battery <b>NA</b> - None <sup>10</sup> Specify with multi circuit (#MC) electrical option only. <sup>11</sup> Provide drawing or layout specifications. Consult factory for other configurations. Default section length is 4'. <sup>12</sup> Specify quantity (#), and section length in inches (##). <sup>13</sup> Minimum 4' fixture. <sup>14</sup> Not available with 347V. <sup>15</sup> Specify quantity (#). All batteries will be on the same circuit. Each battery powers a 4' section. For Direct/Indirect, minimum 8' fixture.	<b>ACS</b> - Aircraft cable, standard <b>STS</b> - Stem, standard <b>ACC()</b> - Aircraft cable, custom <b>STC()</b> - Stem, custom <sup>16</sup> See page 2 for ordering details.	<b>W</b> - Matte white <b>AL</b> - Aluminum <b>CF#</b> - Custom finish, specify RAL#	<b>FU120</b> - Fuse 120V <b>FU277</b> - Fuse 277V <b>CTB9</b> <sup>17</sup> - T-bar caddy clip, 9/16" <b>CTB15</b> <sup>17</sup> - T-bar caddy clip, 15/16" <b>CTC9</b> <sup>17</sup> - Tegular caddy clip, 9/16" <b>CTG15</b> <sup>17</sup> - Tegular caddy clip, 15/16" <b>CST</b> <sup>17</sup> - Screw slot caddy clip <b>NA</b> - None <sup>17</sup> Available with aircraft cable only.

## Section views

## DIRECT/INDIRECT



## DIRECT



## Pendant Mounting Code

## Aircraft Cable

## Standard

## ACS - Aircraft cable, standard

Ø5" for power canopy  
Ø3" for non-power  
Canopies are white  
Power cord is white for all fixture finishes  
(except black fixture is black power cord)  
Aircraft cable length is 36"

## Custom

## ACC( ) - Aircraft cable, custom

NON-POWER CANOPY SIZE	AIRCRAFT CABLE LENGTH	CANOPY FINISH	POWER CORD COLOR	OPTIONS
<b>3NPC</b> - Ø3" non-power canopy <b>5NPC</b> - Ø5" non-power canopy	<b>36IN</b> - 36" <b>72IN</b> - 72" <b>120IN</b> - 120" <b>#IN</b> <sup>1</sup> - Other lengths, specify in inches	<b>W</b> - Matte white <b>AL</b> - Aluminum <b>B</b> - Matte black <b>CF#</b> - Custom finish, specify RAL#	<b>PCW</b> - White <b>PCB</b> - Black	<b>SEM</b> - Seismic mounting <b>SLC</b> - Sloped ceiling for aircraft cable <b>NA</b> - None

<sup>1</sup>Maximum length is 288". For longer lengths, please consult factory.

Example: ACC(3NPC-72IN-W-PCB-SLC)

## Stem

## Standard

## STS - Stem, standard

Ø5" for power canopy  
Ø5" for non-power  
Canopies are white  
Stem finish is the same color as fixture  
Stem length is 18"  
Stem is not field adjustable

## Custom

## STC( ) - Stem, custom

NON-POWER CANOPY SIZE	STEM LENGTH	CANOPY FINISH	STEM COLOR	OPTIONS
<b>5NPC</b> - Ø5" non-power canopy	<b>18IN</b> - 18" <b>36IN</b> - 36" <b>#IN</b> <sup>2</sup> - Specify length in inches	<b>W</b> - Matte white <b>AL</b> - Aluminum <b>B</b> - Matte black <b>CF#</b> - Custom finish, specify RAL#	<b>STW</b> - Matte white <b>STAL</b> - Aluminum <b>STB</b> - Matte black <b>STCF#</b> - Custom finish, specify RAL#	<b>SLS</b> - Sloped ceiling for stem <b>NA</b> - None

<sup>2</sup>Minimum length is 6". Maximum length is 72". Stem is not field adjustable.

Example: STC(5NPC-36IN-W-STW-SLS)

# SELKA

PENDANT  
DIRECT/INDIRECT, DIRECT

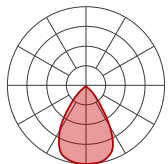
# LUMENWERX

## Photometrics

Values calculated based on a 4 ft fixture at 35K and 80 CRI for all optics.

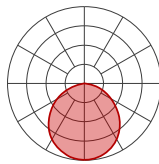
### DIRECT OPTICS

MBPL



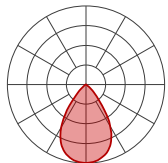
LM/FT	W/FT	LPW
500	7.5	66
750	11.7	64

HLO



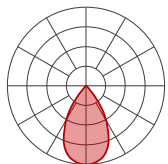
LM/FT	W/FT	LPW
500	5.3	95
750	8.2	91
1000	11.4	88

MPL



LM/FT	W/FT	LPW
500	5.1	98
750	7.7	98
1000	10.6	95

SPL



LM/FT	W/FT	LPW
500	4.4	113
750	6.7	112
1000	9.1	109

### MULTIPLIER TABLES - CCT/CRI

Use these tables to get results for different color temperatures, and CRI for all Direct and Indirect photometric tables.

#### MBPL / MPL / SPL

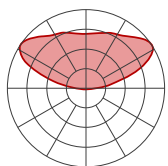
CCT (K)	WATTS		LPW	
	CRI 80	CRI 90	CRI 80	CRI 90
2700	1.04	1.19	0.96	0.84
3000	1.00	1.15	1.00	0.87
3500	1.00	1.12	1.00	0.89
4000	0.99	1.10	1.01	0.91

#### HLO / WIO2

CCT (K)	WATTS		LPW	
	CRI 80	CRI 90	CRI 80	CRI 90
2700	1.05	1.26	0.95	0.79
3000	1.01	1.23	0.99	0.81
3500	1.00	1.20	1.00	0.84
4000	1.00	1.17	1.00	0.85

### INDIRECT OPTIC

WIO2



LM/FT	W/FT	LPW
350	2.4	148
500	3.5	145
750	5.4	140
1000	7.4	134

### DIRECT/INDIRECT - EFFICACY CALCULATION

For Direct/Indirect performance values, follow the formula.

$$\frac{\left( \begin{array}{c} \text{DIRECT} \\ \text{DELIVERED LM} \end{array} + \begin{array}{c} \text{INDIRECT} \\ \text{DELIVERED LM} \end{array} \right)}{\left( \begin{array}{c} \text{DIRECT} \\ \text{WATTAGE} \end{array} + \begin{array}{c} \text{INDIRECT} \\ \text{WATTAGE} \end{array} \right)} = \text{EFFICACY}$$

## Technical Specifications

### DIRECT OPTICS

#### Parabolic Louvers (MBPL, MPL, & SPL)

Selka's parabolic louvers provide excellent shielding and a pleasing crisp visual texture. The precisely molded louvers consist of 1" deep blades and side reflectors with shielding of 50° lengthwise and 45° cross wise.

The entire assembly is regressed 1 3/16" into the luminaire housing for deep lateral shielding. Angled side panels with a high-reflectance, matte white finish direct light into a soft downlight distribution, with spacing criteria of 1:1. Three finishes are available: matte black, matte, and specular.

#### High-Efficiency Lambertian Optic (HLO)

The High-Efficiency Lambertian Optic (HLO) uses matte white reflectors to distribute LED output across 0.075" acrylic shielding, providing up to 88% transmission and good obscuration.

### INDIRECT OPTIC

#### Widespread Indirect Optic (WIO2)

The Widespread Indirect Optic (WIO2) is a horizontal LED array with a widespread indirect micro prismatic optic that offers an impressive 160° spread. WIO2 creates an even illumination for smooth brightness on the ceiling that can achieve uniformity ratios of up to 2:1.

#### Uniformity [max/min]

Based on 18' continuous runs, in a 20' x 40' room, 10' wall height

Mounting height from ceiling	Spacing (Center to center)		
	8'	10'	12'
12"	5.5	10.0	9.0
18"	3.5	6.0	6.0
24"	2.5	4.0	4.5

### LIGHT SOURCE

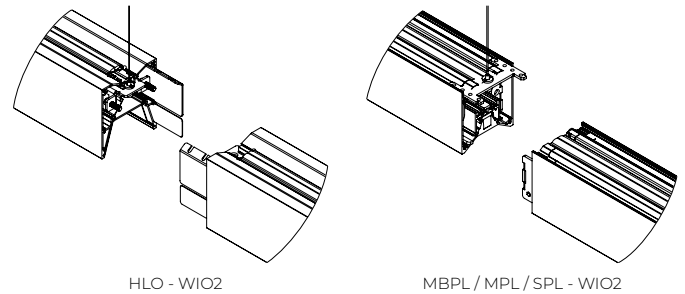
Custom linear array of high-flux LEDs mounted onto aluminum-backed circuitry with quick-connect wiring to facilitate service and optimize thermal management. Available in 2700K, 3000K, 3500K and 4000K with a minimum 80 CRI and an option for 90 CRI with elevated R9 value. Color consistency maintained to within 3 SDCM. All LEDs have been tested in accordance with IESNA LM-80-08 and the results have shown L80 lumen maintenance greater than 60,000 hours. Absolute product photometry is measured and presented in accordance with IESNA LM-79, unless otherwise indicated.

### LUMINAIRE LENGTH

Selka is made up of standard 4 to 12 foot sections that may be joined together to create longer continuous run lengths. Nominal run length must be noted in the product code. The minimum individual section available is 4 feet.

All individual sections are joined together onsite using the joiner kits provided. Lumenwerx offers joiner kits that are extremely simple to work with in the field and result in a fixture that appears virtually seamless with no light leak at any connection.

#### Joining System shown with Direct/Indirect option



### ELECTRICAL

Factory-set, adjustable output current LED driver with universal (120-277VAC) input. Dimmable from 100% to 1% with 0-10V dimming control. Rated life (90% survivorship) of 50,000 hours at 50°C max. ambient (and 70°C max. case) temperature. At maximum driver load: Efficiency > 84%, PF > 0.9, THD < 20%. Other specifiable options include Lutron Hi-Lume 1% (specify 2-wire, or Ecosystem Dim-to-Off), eldoLED 1% ECOdrive 0-10V, eldoLED 0.1% SOLOdrive 0-10V, and DALI protocol drivers. All of our standard 0-10V drivers are NEMA 410 compliant.

### PoE

Depending on the PoE manufacturer selected, Lumenwerx will install the node in factory as either integral to the luminaire or as a remote module. Factory programming of the PoE node may or may not enable the following functionalities: lumen package, Duo (tunable white), Quadro (RGBW) emergency battery backup, and sensor integration. These must be addressed and evaluated on a case-by-case basis.

## PENDANT

## DIRECT/INDIRECT, DIRECT

## ELECTRICAL SECTION OPTIONS

Electrical section options are available for fixtures specified as multi circuit (#MC). With MC, specify the total number of circuits (#), including any circuits required for optional electrical sections. A drawing is required to specify the layout. Please consult factory for custom configurations.

## Electrical sections

Options include emergency-powered (#EC##), night light (#NL##), daylight (#DL##), and generator transfer device (#GTD##) sections. Specify the quantity (#), as well as the section length in inches (##).

Example 1: A 32' Direct fixture with two 8' emergency-powered sections on a second circuit.  
Code: 2MC-2EC96

Example 2: A 16' Direct/Indirect fixture with separate circuits for direct and indirect, and with one 4' night light section on the direct side on a third circuit.  
Code: 3MC-1NL48

Example 3: A 24' Direct fixture with one 4' generator transfer device section.  
Code: 1MC-1GTD48

## Battery

Each emergency battery (#EMB) powers a 4' section. All batteries will be on the same circuit. Specify the number of batteries (#) required.

Factory installed long life, high temperature, maintenance-free Lithium-Ion battery pack with self-test functionality, test switch and charge indicator. Minimum of 90 minutes operation, up to 1000 lumens per 4' (25°C) emergency lighting output and recharge time of 24 hours.

## MOUNTING OPTIONS

Fixtures can be pendant-mounted, using aircraft cables, or stem-mounted. Unless otherwise specified, Lumenwerx provides the following hardware:

**Standard aircraft cable option (ACS)** - Canopies are white, Ø5" for power canopy, Ø3" for non-power. Power cord is black for black fixtures, and white for all other fixture finishes. Aircraft cable length is 36".

**Standard stem option (STS)** - Canopies are white, Ø5" for both power and non-power. Stem finish is the same color as fixture. Stem length is 18". Stem is not field adjustable.

**Caddy clips**, if required specify under OPTIONS

For all other options, see the mounting code on page 2.

## FINISH

**Interior** - 95%, reflective matte powder coated white paint

**Exterior** - Matte white or aluminum powder coating. Custom finishes are also available.

**Side reflector** - High reflective white coating (For HLO only)  
Custom finishes are also available.

## CONSTRUCTION

**Housing** - Extruded aluminum 0.085" nominal

**End cap** - Die cast aluminum

**Joiners** - Die cast aluminum

**Reflectors** - High reflective white coated bent aluminum

**Parabolic louvers** - Injection molded optical grade polycarbonate (0.100" nominal) up to 95% reflective

**Hanger** - Chromed griplock securely attached in end caps and/or joiners with stainless steel hardware

**Aircraft cable suspension** - 7x7 braids aluminum aircraft cable 0.06" thick

**Stem** - 0.5" diameter threaded steel tube matte white or aluminum powder coating. Custom finishes are also available.

## WEIGHT

**4ft** - 13.7 lbs, 6.2 kg

**8ft** - 26.9 lbs, 12.2 kg

**12ft** - 41.1 lbs, 18.6 kg

## CERTIFICATION

**ETL** - Rated for Indoor Dry/Damp locations. Conforms to UL Standard 1598 and certified to CAN/CSA Standard C22.2 No. 250.0.

## WARRANTY

Lumenwerx provides a five-year limited warranty of electrical and mechanical performance of the luminaires, including the LED boards, drivers, and auxiliary electronics. Lumenwerx will repair or replace defective luminaires or components at our discretion, provided they have been installed and operated in accordance with our specifications. Other limitations apply, please refer to the full warranty on our website.