

UBIK SEAL

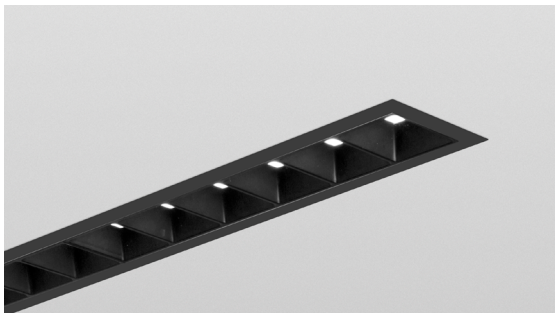
RECESSED
STATIC WHITE, FULL SPECTRUM

LUMENWERX



Project: _____

Type: _____



Parabolic Louver

DESCRIPTION

Sleek square form meets superb function in Ubik, a lighting family designed to provide a multitude of creative options. Ubik Seal Recessed is offered with a choice of three parabolic louver colors: matte white, matte black, and matte silver. An additional gasketed clear polycarbonate lens is mounted on top of the louvers for extra protection. Ubik Seal Recessed comes in static white and full spectrum. For Chromawerx Sola and Duo, consult other spec sheet.

SENSORS
For latest information on sensors, click [here](#).



IC RATED IP54

Up to 137 lm/W performance

Order Guide

LUMINAIRE ID	DISTRIBUTION	OPTIC	LIGHT SOURCE ²	CRI
UBISEALR	D			
UBISEALR ¹ - Ubik Seal Recessed ¹ IP54 rated gasketed construction with an additional clear polycarbonate lens.	D - Direct	MWPL - Matte White Parabolic Louver MSPL - Matte Silver Parabolic Louver MBPL - Matte Black Parabolic Louver	SW - Static white FS - Full spectrum ² Chromawerx Sola and Duo also available. Consult other spec sheet.	80 ³ - 80 CRI 90 ³ - 90 CRI 95 ⁴ - 95 CRI ³ Not available with full spectrum. ⁴ Only available with full spectrum.

LUMEN PACKAGE	COLOR TEMP.	LUMINAIRE LENGTH	VOLTAGE	DRIVER ⁸
350 - Eco low output 350 lm/ft 500 - Low output 500 lm/ft 750 - Medium output 750 lm/ft 1000 ^{5,6} - High output 1000 lm/ft 1200 ^{5,6} - Ultra high output 1200 lm/ft ⁵ Not available with full spectrum. ⁶ Available for non-IC applications only.	27 - 2700K 30 - 3000K 35 - 3500K 40 - 4000K	#FT - Specify nominal length (#) in 1 foot increments Standard nominal lengths: Single units: 3' to 12' Continuous runs: lengths over 12'	120 - 120V 277 - 277V UNV - 120V-277V 347 ⁷ - 347V ⁷ Available with D1 only.	D1 - 1% 0-10V DA ⁹ - DALI LTEA2W ¹⁰ - Lutron 1% - 2 wire FP 120V LDE1 ⁹ - Lutron Hi-lume 1% Eco ELD1 - eldoLED 1% ECOdrive 0-10V ELDO - eldoLED 0.1% SOLOdrive 0-10V ⁸ PoE (Power-over-Ethernet) compatible. Consult factory for details. ⁹ On-site commissioning is required. ¹⁰ Available with 120V only.

ELECTRICAL	ELECTRICAL SECTIONS (optional) ^{14,15}	MOUNTING	FINISH	OPTIONS
1C - 1 circuit #MC ¹¹ - Multi circuit EC - Emergency powered fixture NL - Night light fixture DL - Daylight fixture GTD ^{12,13} - Generator transfer device ¹¹ Specify total number of circuits (#), including any circuits required for electrical section options. Provide drawing or layout specifications. Minimum 4' section per circuit. ¹² Minimum 4' fixture. ¹³ Not available with 347V.	#EC## ¹⁶ - Emergency-powered section #NL## ¹⁶ - Night light section #DL## ¹⁶ - Daylight section #GTD## ^{16,17,18} - Generator transfer device section #EMB ^{18,19} - Emergency powered battery NA - None ¹⁴ Specify with multi circuit (#MC) electrical option only. ¹⁵ Provide drawing or layout specifications. Consult factory for other configurations. Default section length is 4'. ¹⁶ Specify quantity (#), and section length in inches (##). ¹⁷ Minimum 4' section. ¹⁸ Not available with 347V. ¹⁹ Specify quantity (#). All batteries will be on the same circuit. Each battery powers a 4' section.	TG9 - Tegular 9/16" TG15 - Tegular 15/16" TB9 - T-bar 9/16" TB15 - T-bar 15/16" ST - Screw slot T-bar DTR - Drywall trim DTL - Drywall trimless DMF - Drywall mud flange	W - Matte white AL - Aluminum B - Matte black WA - White antimicrobial Silverwerx CF# - Custom finish, specify RAL#	FU120 - Fuse 120V FU277 - Fuse 277V CP - Chicago Plenum GGK - Grid gasket NATA - Natatorium finish CRF - Corrosion-resistant finish NA - None

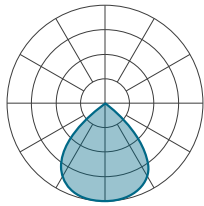
UBIK SEAL

LUMENWERX

RECESSED
STATIC WHITE, FULL SPECTRUM

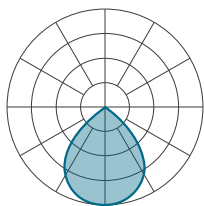
Photometrics

Watts and lumens per watt may vary based on the type of driver selected.



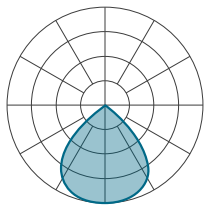
MWPL - Delivered Lumens at 35K at 80 CRI

LUMENS PER FOOT	TOTAL LUMENS PER 4FT	INPUT WATTAGE	LPW
350	1400	10.2	137
500	2000	15.2	132
750	3000	23.6	127
1000	4000	32.5	123
1200	4800	39.7	121



MSPL - Delivered Lumens at 35K at 80 CRI

LUMENS PER FOOT	TOTAL LUMENS PER 4FT	INPUT WATTAGE	LPW
350	1400	11.2	125
500	2000	16.7	120
750	3000	26.1	115
1000	4000	35.7	112
1200	4800	43.6	110



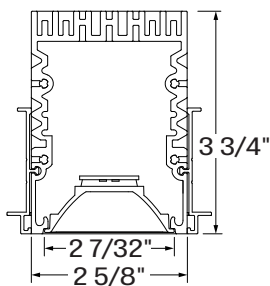
MBPL - Delivered Lumens at 35K at 80 CRI

LUMENS PER FOOT	TOTAL LUMENS PER 4FT	INPUT WATTAGE	LPW
350	1400	12.8	109
500	2000	19.0	105
750	3000	29.7	101
1000	4000	40.8	98
1200	4800	50.0	96

Multiplier - CCT/CRI

CCT (K)	WATTS		LPW	
	CRI 80	CRI 90	CRI 80	CRI 90
2700	1.04	1.19	0.96	0.84
3000	1.00	1.15	1.00	0.87
3500	1.00	1.12	1.00	0.89
4000	0.99	1.10	1.01	0.91

Cross section



Parabolic Louver

UBIK SEAL

RECESSED

STATIC WHITE, FULL SPECTRUM

LUMENWERX

Technical Specifications

OPTICS

Parabolic Louvers

Parabolic louvers provide excellent shielding and a pleasing crisp visual texture. The precisely molded louvers consist of 1" deep blades and is 2"x2" in size. The LED array is secured in the direct position, with the light transmitting through a beam-forming lens creating a conical distribution. Three matte (MPL) finishes are available in black, white and silver, offering a soft appearance, a wide beam spread of up 85-91 degrees, gentle brightness transition at cut-off, and exceptional UGR.



LIGHT SOURCE - STATIC WHITE

Custom array of mid-flux LEDs are mounted directly to the housing for optimal thermal performance. Available in 2700K, 3000K, 3500K, and 4000K with a minimum 80 CRI and an option for 90 CRI with elevated R9 value. Color consistency maintained to within 3 SDCM. LEDs operated at reduced drive current to optimize efficacy and lumen maintenance.

All LEDs have been tested in accordance with IESNA LM-80-08 and the results have shown L80 lumen maintenance greater than 60,000 hours. Absolute product photometry is measured and presented in accordance with IESNA LM-79, unless otherwise indicated.

LIGHT SOURCE - FULL SPECTRUM

The full spectrum LED option offers improved color particularly in the cyan region that is beneficial in both healthcare and circadian lighting strategies. The cyan region in full spectrum LED is richer at the 480 nm range.



WELL for Light - The WELL building standard focuses on light quality in several features. There are three categories that are fully attributed to the construction and features of a luminaire. In WELL V1, it's Feature 54 Circadian Lighting, Feature 55 Glare Control, and Feature 58 Color Quality. In WELL V2, it's Feature L03 Circadian Lighting, Feature L04 Glare Control, and Feature L07 Electric Light Quality.

This fixture meets Features:

- Feature 54 or L03 when full spectrum is selected
- Feature 55 or L04 meets WELL glare category (b-c-d)
- Feature 58 or L07 when 90 CRI is selected

All LED drivers used at Lumenwerx are deemed to have a low risk level of flicker, of 5 % or less below 90Hz operational as defined by IEEE standard 1789-2015 LED.



WELL for Mind - This luminaire meets WELL for mind as it is a human centric luminaire offering quality light, excellent color, and smooth optics. If any of these features are incorporated in a luminaire, it can improve the ability to focus, concentrate, and persist longer on a given task. This fixture harmoniously operates in a space to assist the mind.

For more information please contact well@lumenwerx.com.

LUMINAIRE LENGTH

Ubik is made up of standard 3 to 12 foot sections that may be joined together to create longer continuous run lengths. Exact run lengths must be noted in the product code. The minimum length is 3 feet. Lengths can be ordered in 1 foot increments.

All individual sections are joined together onsite using the joiner kits provided. Lumenwerx offers joiner kits that are extremely simple to work with in the field and result in a fixture that appears virtually seamless with no light leak at any connection.

UBIK SEAL

LUMENWERX

RECESSED

STATIC WHITE, FULL SPECTRUM

ELECTRICAL

Factory-set, adjustable output current LED driver with universal (120-277VAC) input. Dimmable from 100% to 1% with 0-10V dimming control. Rated life (90% survivorship) of 50,000 hours at 50°C max. ambient (and 70°C max. case) temperature. At maximum driver load: Efficiency > 84%, PF > 0.9, THD < 20%. Other specifiable options include Lutron Hi-Lume 1% (specify 2-wire, or Ecosystem Dim-to-Off), eldoLED 1% ECOdrive 0-10V, eldoLED 0.1% SOLOdrive 0-10V, DALI protocol drivers. All of our standard 0-10V drivers are NEMA 410 compliant.

PoE

Depending on the PoE manufacturer selected, Lumenwerx will install the node in factory as either integral to the luminaire, or as a remote module. Factory programming of the PoE node may or may not enable the following functionalities: lumen package, Duo (tunable white), emergency battery backup, and sensor integration. These must be addressed and evaluated on a case-by-case basis.

ELECTRICAL SECTION OPTIONS

Electrical section options are available for fixtures specified as multi circuit (#MC). With MC, specify the total number of circuits (#), including any circuits required for optional electrical sections. A drawing is required to specify the layout. Please consult factory for custom configurations.

Electrical sections

Options include emergency-powered (#EC##), night light (#NL##), daylight (#DL##), and generator transfer device (#GTD##) sections. Specify the quantity (#), as well as the section length in inches (##).

Example 1: A 32' Direct fixture with two 8' emergency-powered sections on a second circuit.

Code: 2MC-2EC96

Example 2: A 24' Direct fixture with one 4' generator transfer device section.

Code: 1MC-1GTD48

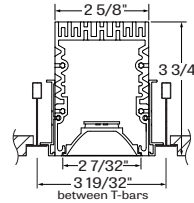
Battery

Each emergency battery (#EMB) powers a 4' section. All batteries will be on the same circuit. Specify the number of batteries (#) required.

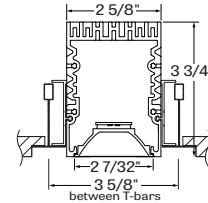
Factory installed long life, high temperature, maintenance-free Lithium-Ion battery pack with self-test functionality, test switch and charge indicator. Minimum of 90 minutes operation, up to 1000 lumens per 4' (25°C) emergency lighting output and recharge time of 24 hours.

MOUNTING OPTIONS

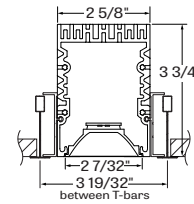
Recessed fixtures can be mounted into exposed or concealed T-bar or tegular grid ceilings.



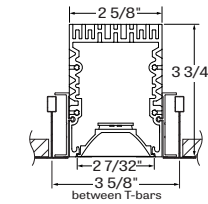
TG9 - Tegular 9/16"



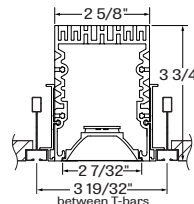
TG15 - Tegular 15/16"



TB9 - T-bar 9/16"

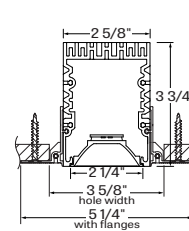


TB15 - T-bar 15/16"

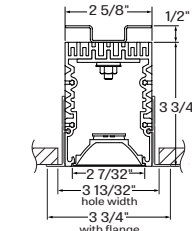


ST - Screw slot T-bar

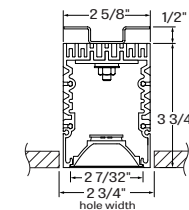
Mounting for drywall ceilings are available with visible trim, trimless or mud flange



DMF - Drywall mud flange



DTR - Drywall trim



DTL - Drywall trimless

UBIK SEAL

RECESSED
STATIC WHITE, FULL SPECTRUM

LUMENWERX

CONSTRUCTION

Housing - Extruded aluminum (0.070" nominal) up to 90% recycled content

Joiner bracket (DTL-DTR) - Cold drawn steel 8 gauge thick

Joiner bracket (other) - Galvanised steel 16 gauge thick

Louvers - Injection molded optical grade polycarbonate up to 95% reflective

Parabolic heatsink - Extruded aluminum (0.10" nominal) up to 90% recycled content

End plate - Aluminum sheet 0.19" thick

Gasket - Closed-cell silicone foam gasket.

Grid gasket (GGK option) - 1/16" closed-cell silicone foam, assures a better seal between the fixture and the grid.

FINISH

Interior - 95%, reflective matte powder coated white paint

Exterior - Powder-coat paint in standard white, aluminum, or black. Optional antimicrobial finish, as well as custom finishes, also available.

WEIGHT

Ubik Seal 4ft - 14.2 lbs - 6.4 kg

Ubik Seal 6ft - 21.3 lbs - 9.7 kg

Ubik Seal 8ft - 28.4 lbs - 12.9 kg

Ubik Seal 12ft - 35.5 lbs - 16.1 kg

CERTIFICATIONS

ETL - Rated for Indoor Dry/Damp locations. Conforms to UL Standard 1598 and certified to CAN/CSA Standard C22.2 No. 250.0.

IC rated - Suitable for direct contact with insulation

Chicago Plenum - City of Chicago approved (CCEA)

WARRANTY

Lumenwerx provides a five-year limited warranty of electrical and mechanical performance of the luminaires, including the LED boards, drivers, and auxiliary electronics. Lumenwerx will repair or replace defective luminaires or components at our discretion, provided they have been installed and operated in accordance with our specifications. Other limitations apply, please refer to the full warranty on our website.