

# UBIK

WALL

CHROMAWERX - SOLA AND DUO

# LUMENWERX



Project: \_\_\_\_\_

Type: \_\_\_\_\_

## DESCRIPTION

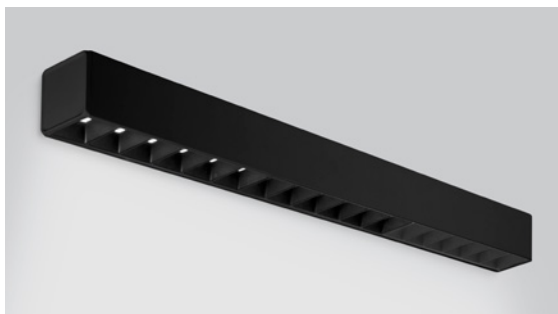
Sleek square form meets superb function in Ubiq, a lighting family designed to provide a multitude of creative options. These compact 2" wide wall fixtures are offered with parabolic louver optics or HLO for direct illumination, and translucent optics for indirect illumination.



Up to 145 lm/W performance

## DIRECT OPTICS

### Parabolic Louver



Matte White

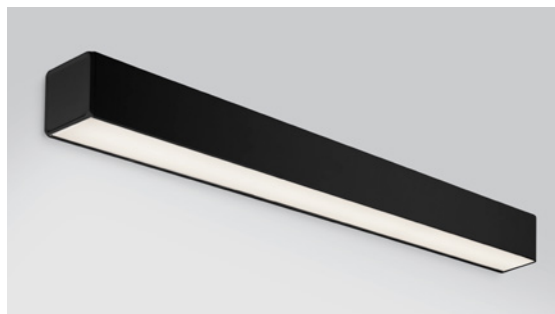


Matte Silver



Matte Black

### High-Efficiency Lambertian Optic



## INDIRECT OPTICS

### Translucent Indirect Optic



# UBIK

WALL

CHROMAWERX - SOLA AND DUO

# LUMENWERX



Project: \_\_\_\_\_

Type: \_\_\_\_\_

## Order Guide

LUMINAIRE ID	DISTRIBUTION	DIRECT OPTIC	INDIRECT OPTIC Specify NA for Direct fixture	LIGHT SOURCE <sup>1</sup>	CRI
<b>UBIW</b>					
<b>UBIW</b> - Ubik Wall	<b>DI</b> - Direct/Indirect <b>D</b> - Direct	<b>MWPL</b> - Matte White Parabolic Louver <b>MSPL</b> - Matte Silver Parabolic Louver <b>MBPL</b> - Matte Black Parabolic Louver <b>HLO</b> - High-Efficiency Lambertian Optic	<b>TIO</b> - Translucent Indirect Optic <b>NA</b> - Not applicable	<b>SOLA</b> - Dim-to-warm single channel control 35K to 22K <b>DUO</b> - Tunable white 2-channel control 65K to 27K  <sup>1</sup> Static white and BIOS also available. Consult other spec sheet.	<b>80</b> - 80CRI <b>90</b> - 90CRI

DIRECT LUMEN PACKAGE	INDIRECT LUMEN PACKAGE Specify NA for Direct fixture	LUMINAIRE LENGTH	VOLTAGE
<b>350</b> - Low output 350 lm/ft <b>500</b> - Medium output 500 lm/ft <b>750</b> - High output 750 lm/ft	<b>350</b> - Low output 350 lm/ft <b>500</b> - Medium output 500 lm/ft <b>NA</b> - Not applicable	<b>#FT</b> - Specify nominal length (#) in 1 foot increments  <b>Standard nominal lengths:</b> Single units: 6' to 12' Continuous runs: lengths over 12'	<b>120</b> - 120V <b>277</b> - 277V <b>UNV</b> - 120V-277V

DRIVER <sup>2</sup>	ELECTRICAL	MOUNTING	FINISH	END CAP	OPTIONS
	<b>1C</b>	<b>DMB</b>			
<u>SOLA</u> <b>SD1</b> - Single 0-10V input <u>DUO</u> <b>DMX</b> <sup>3</sup> - DMX, to specify see pages 7 to 12 <b>DDA</b> <sup>3</sup> - DALI DT6 <b>DDA8</b> <sup>3</sup> - DALI DT8 <b>DD1</b> - Dual 0-10V input for CCT/intensity <b>PSQ0</b> <sup>3</sup> - Lutron T-Series 1% Tunable White  <sup>2</sup> PoE (Power-over-Ethernet) compatible. Consult factory for details. <sup>3</sup> On-site commissioning is required.	<b>1C</b> - 1 circuit	<b>DMB</b> - Drywall mounting bracket	<b>W</b> - Matte white <b>AL</b> - Aluminum <b>B</b> - Matte black <b>WA</b> - White antimicrobial Silverwerx <b>CF#</b> - Custom finish, specify RAL#	<b>BE</b> - Beveled <b>FL</b> - Flat	<b>FUI20</b> - Fuse 120V <b>FU277</b> - Fuse 277V <b>NA</b> - None

## Accessories

Optional, order separately

DMX WALL CONTROLLER <sup>4</sup>
<b>WCW</b> - Wall controller white <b>WBW</b> - Wall controller black  <sup>4</sup> Available with DMX only. For more information, see pages 7 to 12, or consult factory.

# UBIK

WALL  
CHROMAWERX - SOLA AND DUO

# LUMENWERX



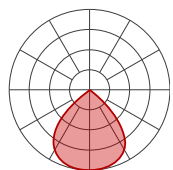
Project: \_\_\_\_\_

Type: \_\_\_\_\_

## Photometrics

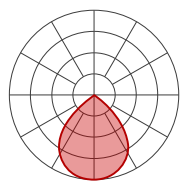
For direct/indirect models, combine information given from direct photometrics with information given from indirect photometrics. Watts and lumens per watt may vary based on the type of driver selected.

### DIRECT



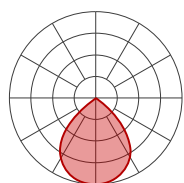
MWPL - Delivered Lumens at 35K at 80 CRI

LUMENS PER FOOT	TOTAL LUMENS PER 4FT	INPUT WATTAGE	LPW
350	1400	10.2	137
500	2000	15.2	132
750	3000	23.6	127



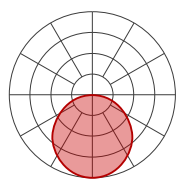
MSPL - Delivered Lumens at 35K at 80 CRI

LUMENS PER FOOT	TOTAL LUMENS PER 4FT	INPUT WATTAGE	LPW
350	1400	11.2	125
500	2000	16.7	120
750	3000	26.1	115



MBPL - Delivered Lumens at 35K at 80 CRI

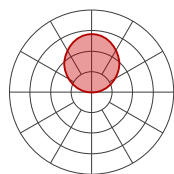
LUMENS PER FOOT	TOTAL LUMENS PER 4FT	INPUT WATTAGE	LPW
350	1400	12.8	109
500	2000	19.0	105
750	3000	29.7	101



HLO - Delivered Lumens at 35K at 80 CRI

LUMENS PER FOOT	TOTAL LUMENS PER 4FT	INPUT WATTAGE	LPW
350	1400	9.7	145
500	2000	14.3	140
750	3000	22.2	135

### INDIRECT



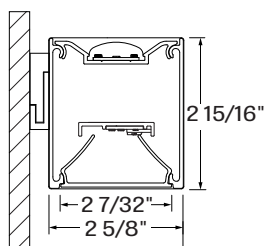
TIO - Delivered Lumens at 35K at 80 CRI

LUMENS PER FOOT	TOTAL LUMENS PER 4FT	INPUT WATTAGE	LPW
350	1400	10.9	128
500	2000	16.1	124

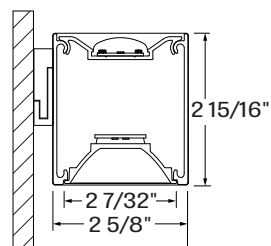
## CROSS SECTIONS

DIRECT / INDIRECT

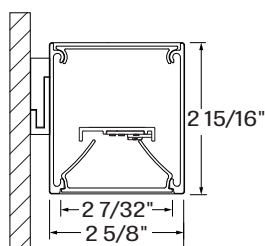
DIRECT



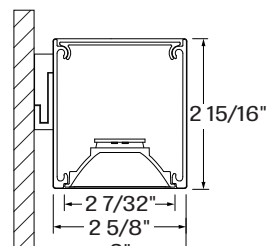
HLO  
TIO



Parabolic Louver  
TIO



HLO



Parabolic Louver

# UBIK

WALL

CHROMAWERX - SOLA AND DUO

# LUMENWERX



Project: \_\_\_\_\_

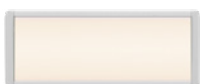
Type: \_\_\_\_\_

## Technical Specifications

### DIRECT OPTICS

#### High-Efficiency Lambertian Optic (HLO)

The High-Efficiency Lambertian Optic (HLO) shielding of diffusing 0.075" thick acrylic with up to 88% transmission and good source obscuration is combined with matte white side reflectors to create an efficient optical chamber with uniform luminosity. Luminaire brightness is controlled by the flux-to-shielding area ratio. For visual comfort, avoid high lumen output unless Ubik is installed in a high ceiling application.



#### Parabolic Louvers

Parabolic louvers provide excellent shielding and a pleasing crisp visual texture. The precisely molded louvers consist of 1" deep blades and is 2"x2" in size. The LED array is secured in the direct position, with the light transmitting through a beam-forming lens creating a conical distribution. Three matte (MPL) finishes are available in black, white and silver, offering a soft appearance, a wide beam spread of up 85-91 degrees, gentle brightness transition at cut-off, and exceptional UGR.



### INDIRECT OPTICS

#### Translucent Indirect Optic (TIO)

A horizontal LED array that has a translucent lens to mask pixilation from the LED diodes. TIO has a 100° spread in the indirect that is ideal when the pendant is dropped farther from the ceiling.

### LIGHT SOURCE

Custom linear array of alternating color temperature mid-flux LEDs are mounted directly to the housing for optimal thermal performance. For the Duo products, a color temperature range from 6500K-2700K is achievable with color points on or below the black body curve. For the Sola products, a color temperature range from 3500K-2200K is controlled synchronously with intensity. Color consistency between fixtures is maintained to within 3 SDCM. LEDs are operated at reduced drive current to optimize efficacy and lumen maintenance.

All LEDs have been tested in accordance with IESNA LM-80-08 and the results have shown L80 lumen maintenance greater than 60,000 hours. Absolute product photometry is measured and presented in accordance with IESNA LM-79, unless otherwise indicated.

### CHROMAWERX - TUNABLE WHITE

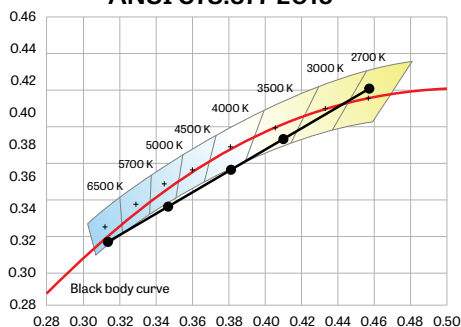
#### Chromawerx SOLA

It is a single-channel control that dims output while warming the color temperature in a pre-determined relationship. A simple analog control sends a common signal to dual output digital drivers, which are programmed to adjust a specially populated LED array to emulate the effect of dimming a filament source. Dimming range is programmable but the default option runs from 3500K at 100% of full power to 2200K at 5% of full power. CRI is maintained above 80 throughout the dimming range.

#### Chromawerx DUO

It is a two-channel control. It uses an analog (0-10V) protocol for separate control of luminaire CCT and intensity or a digital (DMX, DALI and PSQ0) protocol for synchronous control of both warm and cool LED arrays to enable the user to set color temperature and light output. Commonly called "tunable white", Chromawerx two-channel control provides the range of warm (2700K) to cool (6500K) color that can be useful for helping to entrain circadian rhythms, stimulate alertness for improved educational and work productivity, and compensate for jet lag, among other applications. The Chromawerx drivers are programmed to limit maximum light output and power usage across all color temperatures. CRI is maintained above 80.

ANSI C78.377-2015



# UBIK

WALL

CHROMAWERX - SOLA AND DUO

# LUMENWERX



Project: \_\_\_\_\_

Type: \_\_\_\_\_

## LUMINAIRE LENGTH

Ubik is made up of standard 6 to 12 foot sections that may be joined together to create longer continuous run lengths. Exact run lengths must be noted in the product code. The minimum length is 6 feet. Lengths can be ordered in 1 foot increments.

All individual sections are joined together onsite using the joiner kits provided. Lumenwerx offers joiner kits that are extremely simple to work with in the field and result in a fixture that appears virtually seamless with no light leak at any connection.



**WELL for Light** - The WELL building standard focuses on light quality in several features. There are three categories that are fully attributed to the construction and features of a luminaire. In WELL V1, it's Feature 54 Circadian Lighting, Feature 55 Glare Control, and Feature 58 Color Quality. In WELL V2, it's Feature L03 Circadian Lighting, Feature L04 Glare Control, and Feature L07 Electric Light Quality.

This fixture meets Features:

- Feature 54 or L03 when DUO is selected
- Feature 55 or L04 meets WELL glare category (b-c-d)
- Feature 58 or L07 when 90CRI is selected

All LED drivers used at Lumenwerx are deemed to have a low risk level of flicker, of 5 % or less below 90Hz operational as defined by IEEE standard 1789-2015 LED.



**WELL for Mind** - This luminaire meets WELL for mind as it is a human centric luminaire offering quality light, excellent color, and smooth optics. If any of these features are incorporated in a luminaire, it can improve the ability to focus, concentrate, and persist longer on a given task. This fixture harmoniously operates in a space to assist the mind.

For more information please contact [well@lumenwerx.com](mailto:well@lumenwerx.com).

## ELECTRICAL

### DMX (DUO only)

Factory-set adjustable output current electronic driver with 120-277V AC line input. Using DMX wall controls (optionally supplied by Lumenwerx) or an existing DMX control system, both channels of LEDs are independently adjustable. Each DMX driver can be independently addressed using the built-in RDM (Remote Device Management) in the field. Dimming down to 1% is attainable. Rated life (90% survivorship) of 50,000 hours at 50°C maximum ambient temperature. At maximum driver load, efficiency < 84%, PF > 0.9, THD < 20%.

### DALI (DUO only)

Factory-set adjustable output current electronic driver with 120-277V AC line input. Using an existing DALI control system (supplied by others), one control channel adjusts the fixture color temperature, and the other control channel adjusts fixture brightness. With DALI Type 6, two DALI addresses are required to control both channels. With DALI Type 8, one DALI address is required to control both channels. Dimming down to 1% is attainable. Rated life (90% survivorship) of 50,000 hours at 50°C maximum ambient temperature. At maximum driver load, efficiency < 84%, PF > 0.9, THD < 20%.

### SD1 (SOLA)

Factory-set, adjustable output current LED driver with universal (120-277VAC) input. Using a single 0-10V control signal, the light output warms in color temperature as it dims down to 1% and 2200K. At maximum driver load, efficiency < 86%, PF > 0.9, THD < 20%.

### DD1 (DUO)

Factory-set adjustable output current LED driver with universal (120-277VAC) input. Controlled via two individual 0-10V signals, one for setting light output down to a minimum of 1% and the other for adjusting the CCT (default range of 2700K-6500K). Rated life of 50,000 hours at 70°C maximum driver case temperature and 100% load conditions. Typical efficiency of 86%, PF > 0.9, THD < 20% at 100% load conditions.

### PSQ0 (DUO only)

Lutron T-Series 2-Channel tunable white drivers enable high-performance human centric lighting (HCL) applications. Digital control of color temperature (CCT) and intensity are achieved when used with the ESN T-Series tunable white controller as a part of a Lutron Quantum System.

### PoE

Depending on the PoE manufacturer selected, Lumenwerx will install the node in factory as either integral to the luminaire, or as a remote module. Factory programming of the PoE node may or may not enable the following functionalities: lumen package, Duo (tunable white), emergency battery backup, and sensor integration. These must be addressed and evaluated on a case-by-case basis.

# UBIK

WALL

CHROMAWERX - SOLA AND DUO

# LUMENWERX



Project: \_\_\_\_\_

Type: \_\_\_\_\_

## MOUNTING OPTIONS

Fixtures may be horizontally mounted to the wall using a bracket. For long runs, a minimum of 6" from adjacent walls is required.

## END CAPS



FL - Flat



BE - Beveled

## CONSTRUCTION

**Housing** - Extruded aluminum (0.070" nominal) up to 90% recycled content

**Joiner** - Die cast aluminum

**Joiner bracket** - Galvanized steel

**HLO heatsink** - Aluminum sheet 10 gauge thick

**Louvers** - Injection molded optical grade polycarbonate up to 95% reflective

**HLO lens** - Coextruded PMMA

**TIO lens** - Frosted acrylic

**End caps** - Die cast aluminum

## FINISH

**Interior** - 95%, reflective matte powder coated white paint

**Exterior** - Powder-coat paint in standard white, aluminum, or black. Custom colors are also available.

## WEIGHT

### Direct / Indirect

**Ubik 4ft** - 7.7 lbs - 3.5 kg

**Ubik 6ft** - 11.6 lbs - 5.3 kg

**Ubik 8ft** - 15.5 lbs - 7 kg

**Ubik 12ft** - 19.4 lbs - 8.8 kg

### Direct

**Ubik 4ft** - 7.2 lbs - 3.3 kg

**Ubik 6ft** - 10.8 lbs - 4.9 kg

**Ubik 8ft** - 14.4 lbs - 6.5 kg

**Ubik 12ft** - 18 lbs - 8.2 kg

## CERTIFICATIONS

**ETL** - Rated for Indoor Dry/Damp locations. Conforms to UL Standard 1598 and certified to CAN/CSA Standard C22.2 No. 250.0.

## WARRANTY

Lumenwerx provides a five-year limited warranty of electrical and mechanical performance of the luminaires, including the LED boards, drivers, and auxiliary electronics. Lumenwerx will repair or replace defective luminaires or components at our discretion, provided they have been installed and operated in accordance with our specifications. Other limitations apply, please refer to the full warranty on our website.



Project: \_\_\_\_\_

Type: \_\_\_\_\_

## DUO DMX SPECIFICATION

A qualified DMX integrator is required to assure proper installation and commissioning of the DMX network. **When placing the PO, please provide the contact information of your DMX integrator.**

Please answer the following questions to help us identify your DMX network requirements.

YES

Do you require a wall controller provided by Lumenwerx?

NO

DMX control system supplied by others. Lumenwerx will supply DMX-enabled fixtures with default DMX addressing. See following pages for technical DMX informations. ✓

DMX controller supplied by Lumenwerx

### How many zones do you have?

A zone consists of one or more luminaires behaving identically.

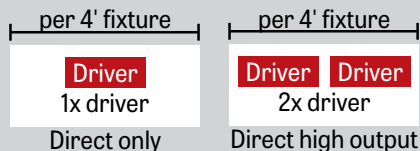


1 Zone



2 Zones

### How to calculate the required number of drivers:



To Calculate # of drivers

1- 4 Zones

5 or more Zones

Do you have more than 32 drivers in total?

NO

YES

Order a standard Lumenwerx wall controller.

#### WALL CONTROLLER

**WCW** - wall controller white  
**WCB** - wall controller black

Add the control code at the end of your order code.

Please provide a fixture layout or RCP (Reflected Ceiling Plan) showing the locations of the DMX fixtures, zones and the DMX wall controller.

Refer to your DMX integrator for the installation. ✓

Subject to factory evaluation and approval. Please contact our controls specialist at [controls@lumenwerx.com](mailto:controls@lumenwerx.com). Additional cost and equipment will be required. ✓

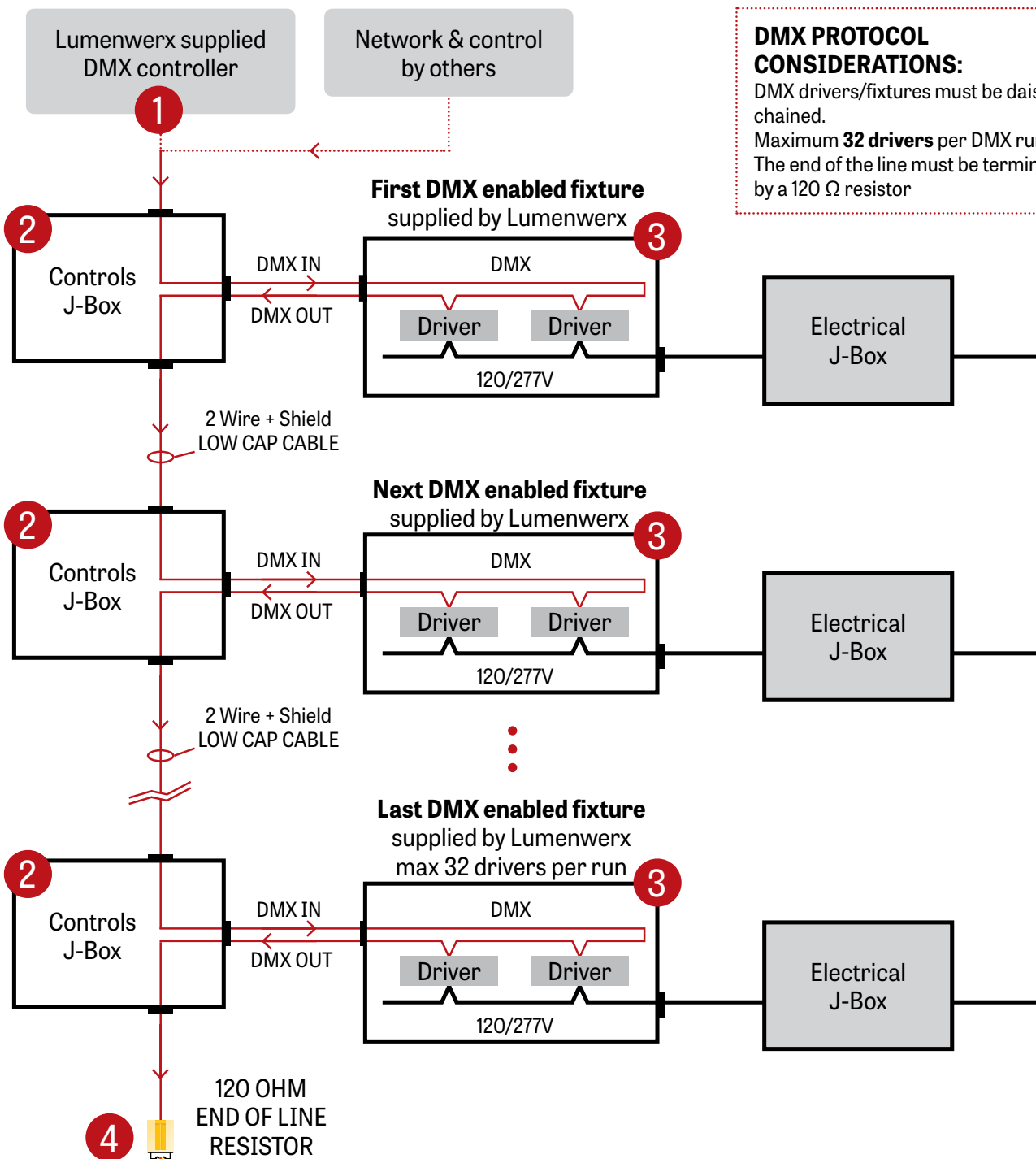
Subject to factory evaluation. Please contact our controls specialist at [controls@lumenwerx.com](mailto:controls@lumenwerx.com). Additional cost and equipment will be required. ✓



Project: \_\_\_\_\_

Type: \_\_\_\_\_

## GENERIC DMX NETWORK ARCHITECTURE



**DMX PROTOCOL CONSIDERATIONS:**  
DMX drivers/fixtures must be daisy chained.  
Maximum **32 drivers** per DMX run.  
The end of the line must be terminated by a 120 Ω resistor





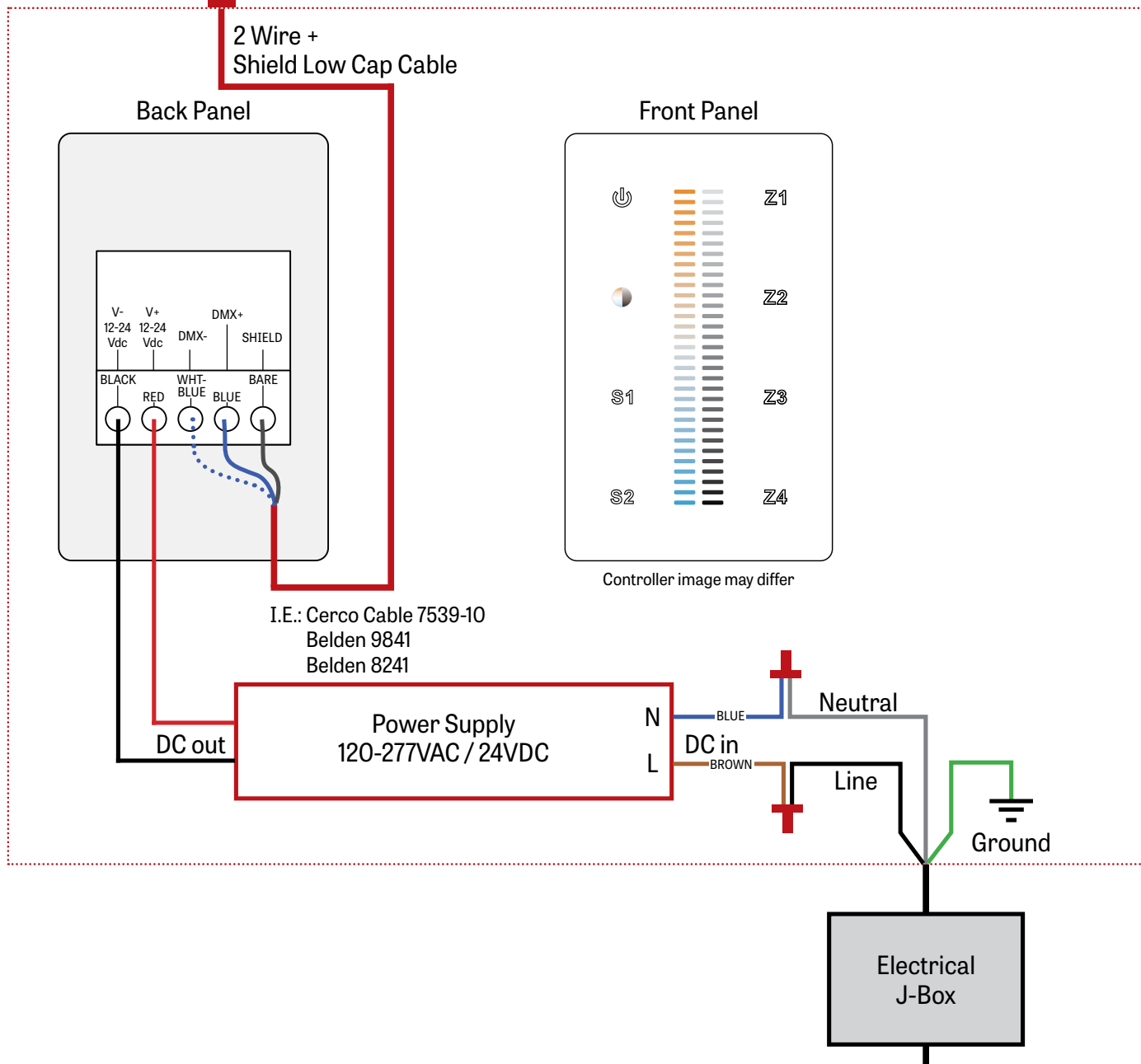
Project: \_\_\_\_\_

Type: \_\_\_\_\_

**1 LUMENWERX SUPPLIED DMX CONTROLLER**

To the first fixture

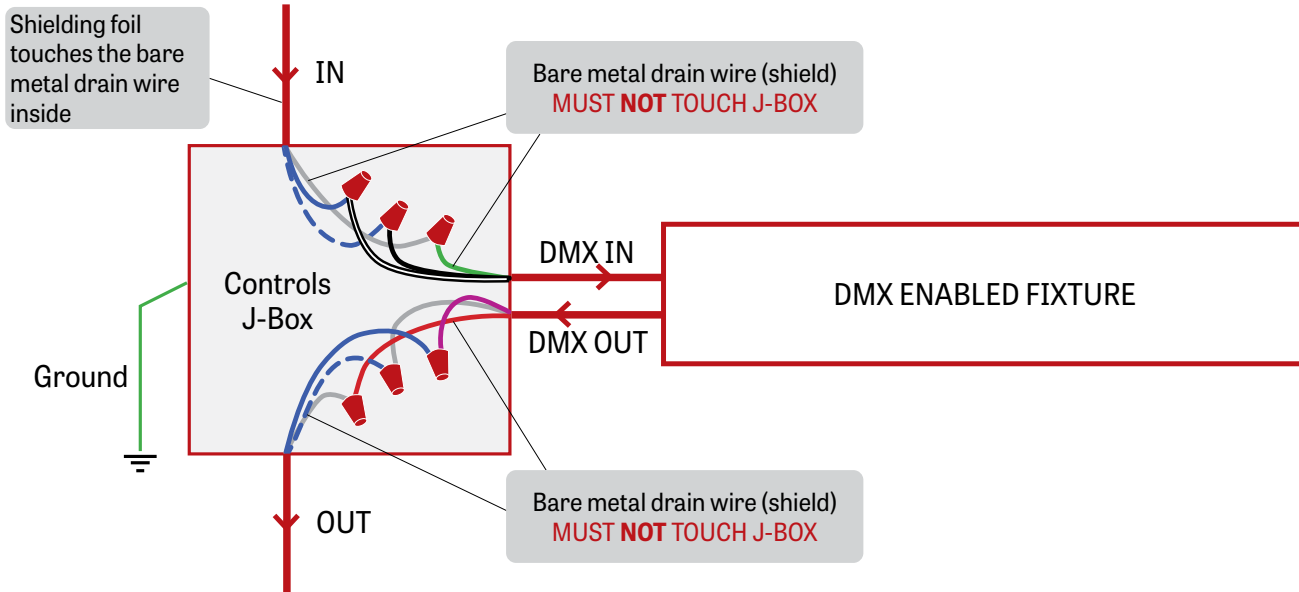
WALL BOX SUPPLIED BY OTHERS





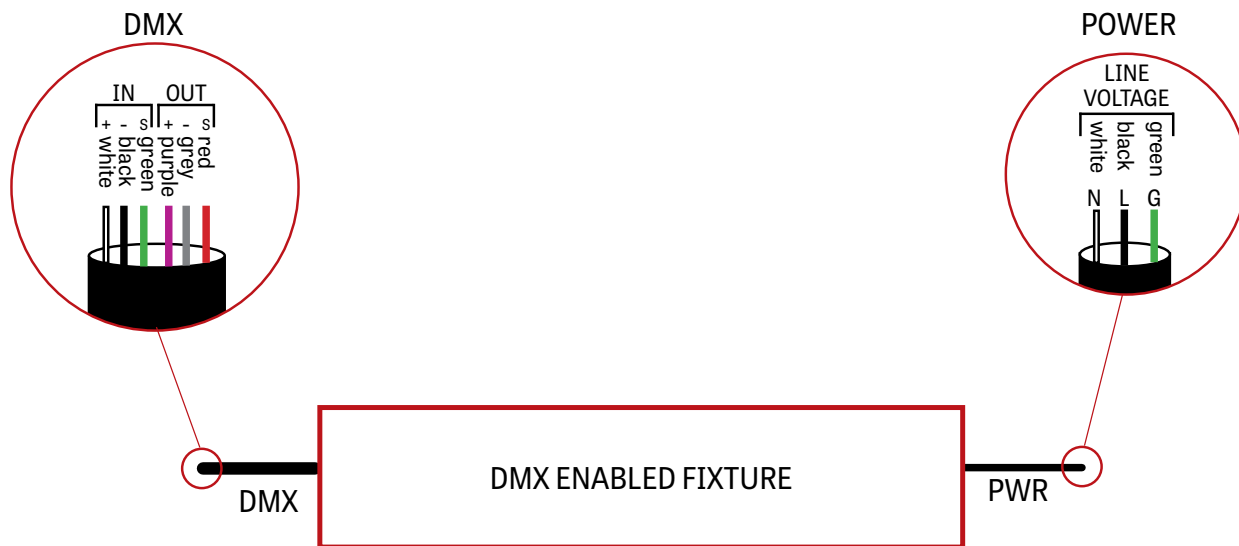
## 2 J-BOX DMX DAISY CHAIN DETAIL

Low capacitance DMX Cable from Previous Fixture



Low capacitance DMX cable to next fixture

## 3 DMX CONNECTION PENDANT & WALL

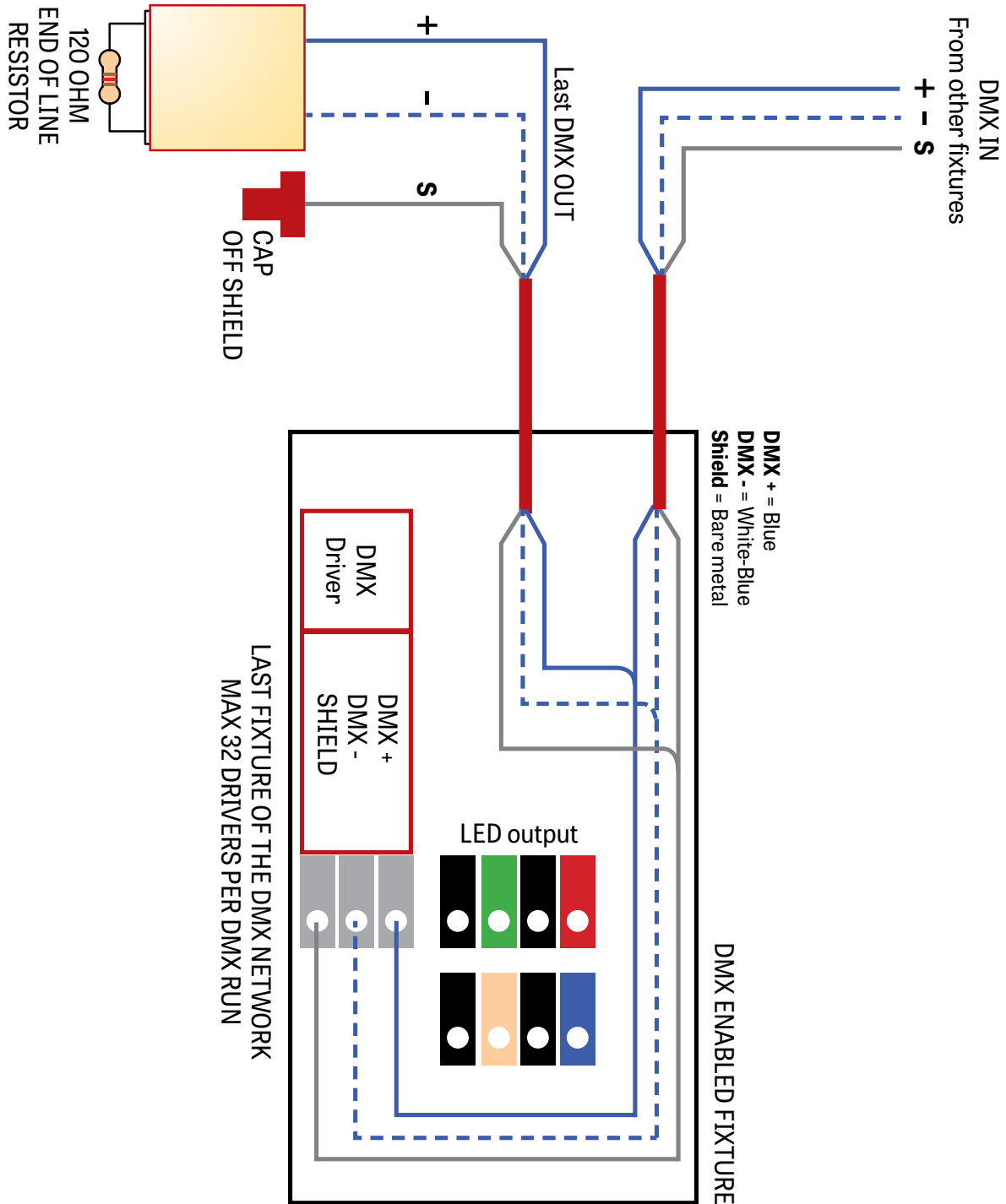




Project: \_\_\_\_\_

Type: \_\_\_\_\_

**4** DMX LAST FIXTURE DETAIL



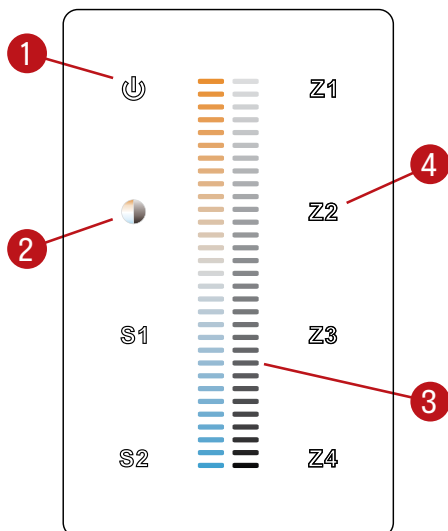


Project: \_\_\_\_\_

Type: \_\_\_\_\_

## DMX WALL CONTROLLER

### DUO 1-4 ZONE



(1) Power:

Use this button to turn ON or OFF the fixture.

(2) Brightness/CCT:

Use the color/brightness toggle button to choose between color/brightness. When Blue: brightness is selected, when Yellow: color is selected.

(3) Slider:

Depending on the mode chosen in step 2, the slider will allow the user to set desired color or brightness.

(4) Zone select:

Up to 4 zones can be selected either independently or together. Once selected, the commands will be sent to the zone identified by a Blue LED.

### Default DMX Addresses:

- 1 Warm
- 2 Cool