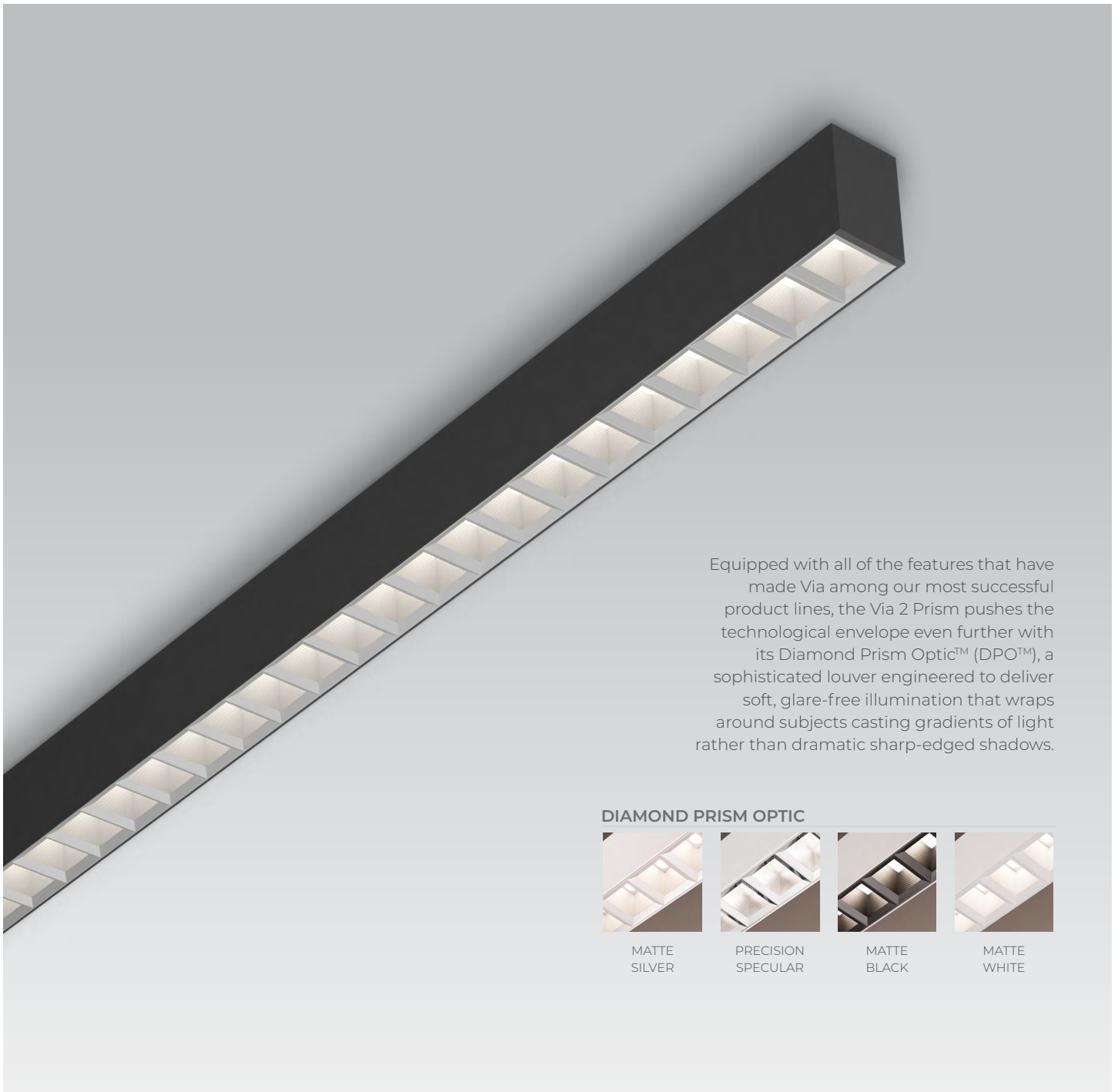


VIA 2 PRISM

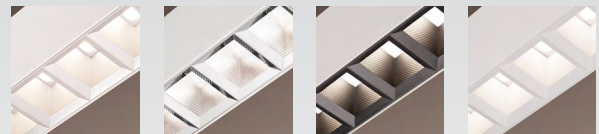
SURFACE
DIRECT

LUMENWERX



Equipped with all of the features that have made Via among our most successful product lines, the Via 2 Prism pushes the technological envelope even further with its Diamond Prism Optic™ (DPO™), a sophisticated louver engineered to deliver soft, glare-free illumination that wraps around subjects casting gradients of light rather than dramatic sharp-edged shadows.

DIAMOND PRISM OPTIC



MATTE
SILVER

PRECISION
SPECULAR

MATTE
BLACK

MATTE
WHITE

SENSORS
For latest
information
on sensors,
click [here](#).



VIA 2 PRISM

LUMENWERX

SURFACE
DIRECT



Project: _____
Type: _____

Order Guide

LUMINAIRE ID	DISTRIBUTION	OPTIC	LIGHT SOURCE ¹	CRI	LUMEN PACKAGE
VIA2PRS	D				
VIA2PRS - Via 2" Prism Surface	D - Direct	SDPO - Matte Silver Diamond Prism Optic PDPO - Precision Specular Diamond Prism Optic BDPO - Matte Black Diamond Prism Optic WDPO - Matte White Diamond Prism Optic	SW - Static white FS - Full spectrum ¹ Chromawerx Sola and Duo also available. Consult factory.	80 ² - 80 CRI 90 ² - 90 CRI 95 ³ - 95 CRI	350 - Low output 350 lm/ft 500 - Medium output 500 lm/ft 750 - High output 750 lm/ft 1000 ^{4,5} - Ultra high output 1000 lm/ft 1200 ^{4,5} - Hyper output 1200 lm/ft

COLOR TEMP.	LUMINAIRE LENGTH	VOLTAGE	DRIVER ⁷	ELECTRICAL	ELECTRICAL SECTIONS (optional) ^{13,14}
27 - 2700K 30 - 3000K 35 - 3500K 40 - 4000K	#FT#IN - Specify nominal length (#) in 1' and/or 6" increments Standard nominal lengths: Single units: 2' - 12' Continuous runs: lengths over 12'	120 - 120V 277 - 277V UNV - 120V-277V 347 ⁶ - 347V	D1 - 1% 0-10V DA ⁸ - DALI LTEA2W ⁹ - Lutron 1% - 2 wire FP 120V LDE1 ⁸ - Lutron Hi-lume 1% Eco ELD1 - eldoLED 1% ECODrive 0-10V ELDO - eldoLED 0.1% SOLOdrive 0-10V	1C - 1 circuit #MC ¹⁰ - Multi circuit EC - Emergency-powered fixture NL - Night light fixture DL - Daylight fixture GTD ^{11,12} - Generator transfer device fixture ¹⁰ Specify total number of circuits (#), including any required for electrical section options. Provide drawing or layout specifications. Minimum 4' section per circuit. ¹¹ Minimum 4' fixture. ¹² Not available with 347V.	#EC## ¹⁵ - Emergency-powered section #NL## ¹⁵ - Night light section #DL## ¹⁵ - Daylight section #GTD## ^{15,16,17} - Generator transfer device section #EMB ^{17,18} - Emergency battery NA - None ¹³ Specify with multi circuit (#MC) electrical option only. ¹⁴ Provide drawing or layout specifications. Consult factory for other configurations. Default section length is 4'. ¹⁵ Specify quantity (#), and section length in inches (##). ¹⁶ Minimum 4' section. ¹⁷ Not available with 347V. ¹⁸ Specify quantity (#). All batteries will be on the same circuit. Each battery powers a 4' section.

MOUNTING	FINISH	CONTROL ¹⁹	OPTIONS
DRC - Drywall ceiling GRD - Grid ceiling	W - Matte white AL - Aluminum B - Matte black CF# - Custom finish, specify RAL#	STANDALONE CONTROLS ^{20,21} Specify the quantity (#) of sensors per fixture. #OMS ²² - Onboard Occupancy #OMS## ²³ - Onboard Occupancy with bi-level dimming #ODS - Onboard Daylight #OCS - Onboard Occupancy & Daylight NA - None ¹⁹ Standalone and connected control options cannot be combined. ²⁰ Available with DI driver and 1 circuit options only. ²¹ Minimum 4' per zone. Provide control zone length. ²² Fixture turns off when no occupancy. ²³ Fixture dims to specified light level % (##). ²⁴ Consult factory for connected controls.	CONNECTED CONTROLS ²⁴ LU - Lutron EN - Enlighted ENC - Encelium WL - Cooper Wavelinx AN - Acuity nLight CA - Casambi LG - Legrand FU120 - Fuse 120V FU277 - Fuse 277V NA - None

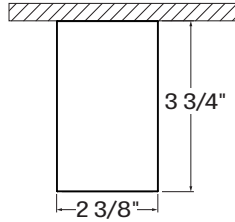
MICRO SPOT ²⁵	MS CRI	MS LUMEN PACK.	MS COLOR TEMP.	MS FINISH
#MS25 - Micro Spot 25° #MS35 - Micro Spot 35° #MS50 - Micro Spot 50° ²⁵ Specify quantity (#).	80 - 80 CRI 90 - 90 CRI	400 ²⁶ - 400 lm ²⁶ 5 W. Wattage is for reference only. May change based on driver.	27 - 2700K 30 - 3000K 35 - 3500K 40 - 4000K	W - Matte white B - Matte black

VIA 2 PRISM

LUMENWERX

SURFACE
DIRECT

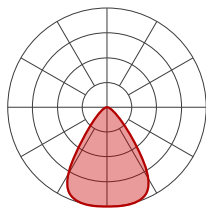
Dimensions



Photometrics

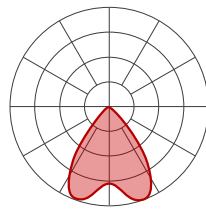
Values calculated based on a 4 ft fixture at 35K and 80 CRI for all optics.

SDPO



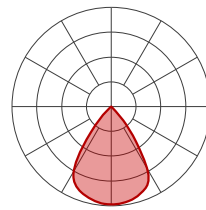
LM/FT	W/FT	LPW
350	2.6	132
500	3.8	132
750	5.9	127
1000	8.2	122
1200	10	120

PDPO



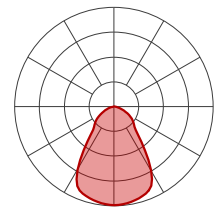
LM/FT	W/FT	LPW
350	2.4	147
500	3.4	147
750	5.3	142
1000	7.3	137
1200	8.9	134

BDPO



LM/FT	W/FT	LPW
350	5.1	69
500	7.5	66
750	11.9	63
1000	16.7	60

WDPO



LM/FT	W/FT	LPW
350	2.4	145
500	3.5	144
750	5.4	139
1000	7.4	135
1200	9.1	132

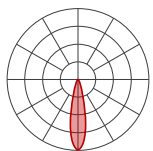
MULTIPLIER TABLES

Use these tables to get results for different color temperatures and CRI.

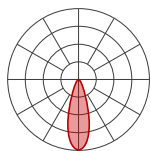
Multiplier - CCT/CRI
SDPO, PDPO, BDPO, WDPO

CCT (K)	WATTS		LPW	
	CRI 80	CRI 90	CRI 80	CRI 90
2700	1.04	1.19	0.96	0.84
3000	1.00	1.15	1.00	0.87
3500	1.00	1.12	1.00	0.89
4000	0.99	1.10	1.01	0.91

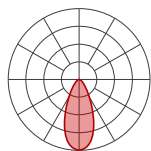
MICRO SPOT



Micro Spot 25°



Micro Spot 35°



Micro Spot 50°

DELIVERED LUMENS

Wattage	5.0							
	80				90			
CRI								
CCT	2700K	3000K	3500K	4000K	2700K	3000K	3500K	4000K
Lumen	373	373	400	400	322	322	322	345

Technical Specifications

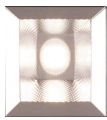
DIRECT OPTICS

Diamond Prism Optic (DPO)

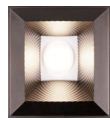
The Diamond Prism Optic™ (DPO™) is our patent-pending 3-tiered optic meticulously crafted to refract and reflect beams with great precision, effectively keeping glare to a minimum while delivering light of exceptional quality and visual comfort.



MATTE SILVER



PRECISION
SPECULAR



MATTE BLACK



MATTE WHITE

LIGHT SOURCE

Custom linear array of mid-flux LEDs are cartridge-mounted with quick-connect wiring to facilitate service and thermal management. Available in 2700K, 3000K, 3500K and 4000K with a minimum 80 CRI and an option for 90 CRI with elevated R9 value. Color consistency maintained to within 3 SDCM. LEDs operate at reduced drive current to optimize efficacy and lumen maintenance. All LEDs have been tested in accordance with IESNA LM-80-08 and the results have shown L80 lumen maintenance greater than 60,000 hours. Absolute product photometry is measured and presented in accordance with IESNA LM-79, unless otherwise indicated.

LUMINAIRE LENGTH

Via 2 Prism is available in standard lengths of 2' to 12'. Continuous runs are available for run lengths over 12'. Exact run length must be noted in the product code. The minimum length is 2', and can be ordered in 1' increments. All individual sections are joined together onsite using the joiner kits provided. Lumenwerx offers joiner kits that are extremely simple to work with in the field and result in a fixture that appears virtually seamless with no light leak at any connection.

ELECTRICAL

Factory-set, adjustable output current LED driver with universal (120-277VAC) input. Dimmable from 100% to 1% with 0-10V dimming control. Rated life (90% survivorship) of 50,000 hours at 50°C max. ambient (and 70°C max. case) temperature. At maximum driver load: Efficiency > 84%, PF > 0.9, THD < 20%. Other specifiable options include Lutron Hi-Lume 1% (specify 2-wire, or Ecosystem Dim-to-Off), eldoLED 1% ECOdrive 0-10V, eldoLED 0.1% SOLOdrive 0-10V, and DALI protocol drivers. All of our standard 0-10V drivers are NEMA 410 compliant.

PoE

Depending on the PoE manufacturer selected, Lumenwerx will install the node in factory as either integral to the luminaire or as a remote module. Factory programming of the PoE node may or may not enable the following functionalities: lumen package, Duo (tunable white), emergency battery backup, and sensor integration. These must be addressed and evaluated on a case-by-case basis.

ELECTRICAL SECTION OPTIONS

Electrical section options are available for fixtures specified as multi circuit (#MC). With MC, specify the total number of circuits (#), including any circuits required for optional electrical sections. A drawing is required to specify the layout. Please consult factory for custom configurations.

Electrical sections

Options include emergency-powered (#EC##), night light (#NL##), daylight (#DL##), and generator transfer device (#GTD##) sections. Specify the quantity (#), as well as the section length in inches (##).

Example 1: A 32' Direct fixture with two 8' emergency-powered sections on a second circuit.

Code: 2MC-2EC96

Example 2: A 24' Direct fixture with one 4' generator transfer device section.

Code: 1MC-1GTD48

Battery

Each emergency battery (#EMB) powers a 4' section. All batteries will be on the same circuit. Specify the number of batteries (#) required.

Factory installed long life, high temperature, maintenance-free Lithium-Ion battery pack with self-test functionality, test switch and charge indicator. Minimum of 90 minutes operation, up to 1000 lumens per 4' (25°C) emergency lighting output and recharge time of 24 hours.

MOUNTING OPTIONS

Fixtures can be mounted directly to T-Bar, drywall and hard surface ceilings, hardware supplied by others. Long runs require a minimum distance of 6" from the vertical wall.

FINISH

Interior - 95%, reflective matte powder coated white paint

Exterior - Matte white, matte black, or aluminum powder coating. Custom finishes are also available.

VIA 2 PRISM

LUMENWERX

SURFACE DIRECT

CONTROLS



Lumenwerx offers several options for integrating occupancy and daylight harvesting controls in our luminaires.

For latest information on sensors, click [here](#).

STANDALONE CONTROLS

An integrated standalone sensor controls the luminaire in which it is installed. Depending on the length, more than one sensor may be necessary and may control the entire luminaire, or just a section of it. These controls operate independently. Unless otherwise agreed, sensor location, blank size, and functionality of the sensor within the luminaire are selected by Lumenwerx. See client drawings for details.

Three types are available:

OMS: An integral Passive InfraRed (PIR) sensor turns luminaires on and off automatically with field-adjustable time out period. No wall control is used. Coverage pattern for large motion has a 12' diameter with the sensor mounted 8' above the floor; for small motion, the pattern has an 8' diameter. Typically, one sensor is required for every 10' of a continuous luminaire run.

ODS: An integral, daylight harvesting sensor with closed-loop operation dims the luminaire in which it is installed in order to compensate for available daylight. The sensor measures the combination of daylight and luminaire light reflected from horizontal surfaces below the luminaire. Initial onsite calibration is required via the use of provided remote control.

OCS: Both an occupancy and a daylight sensor are installed in the luminaire.

CONNECTED CONTROLS

With connected controls, sensors or nodes installed in the luminaire form part of a larger control system infrastructure from manufacturers such as: Lutron, Enlighted, Encelium, Cooper Wavelinx, Acuity nLight, Casambi, Legrand, and others. These connected controls allow for a scalable system providing features like occupancy and daylight control, manual control, scheduling and configuration of various zones and scenes. Energy reporting and system monitoring are also possible. Specific capabilities depend on the control system being used.

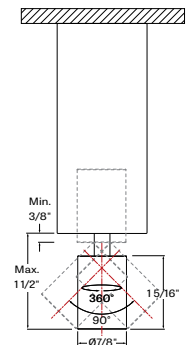
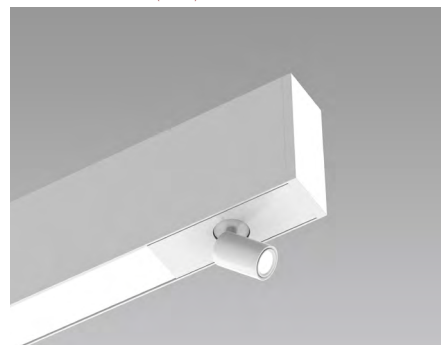
Lumenwerx installs the components (sensors, nodes, power packs, etc) which may be supplied to us by a third party, or procured directly by Lumenwerx, depending on the control system manufacturer.

Lumenwerx is solely responsible for the installation of specified components; the controls manufacturer is responsible for performance of the control system.

To indicate a Lumenwerx luminaire with connected controls, identify the specific onsite control system to be integrated into the luminaires using the ordering code. Due to the diversity of components, you must contact factory to assure complete compatibility with intended control system and to fully specify the luminaire.

Complete control specifications, sensor/node/power pack layout, and narrative for the control system are required for Lumenwerx to create shop drawings and submittals.

MICRO SPOT (MS)



The Micro Spot is a $\varnothing 7/8"$ x $1 5/16"$ adjustable spotlight that extends, retracts, rotates 360°, and tilts 90°. Its LED light source is coupled with a TIR refractor to provide beam angles of 25°, 35°, and 50°, while producing up to 400 lumens. LED light source CCT options are 2700K, 3000K, 3500K, and 4000K, available in either 80 CRI or 90 CRI. The Micro Spot is offered in a white or black finish. The Micro Spot driver is mounted within the luminaire housing and accepts universal input voltage (120-277VAC) with 0-10 V dimming control.

CONSTRUCTION

Housing - Extruded aluminum, up to 90% recycled content

Interior brackets - Die-formed cold rolled sheet steel

Joining system - Die-cast zinc

Reflectors - Aluminum

Lens - Acrylic or polycarbonate

End caps - Die-cast aluminum

WEIGHT

4ft - 9.03 lbs - 4.1 kg

8ft - 18.28 lbs - 8.3 kg

12ft - 27.97 lbs - 12.7 kg

CERTIFICATION

ETL - Rated for Indoor dry/damp locations. Conforms to UL Standard 1598 and certified to CAN/CSA Standard C22.2 No. 250.0.

VIA 2 PRISM

SURFACE
DIRECT

LUMENWERX

WARRANTY

Lumenwerx provides a five-year limited warranty on electrical and mechanical performance of the luminaires, including the LED boards, drivers, and auxiliary electronics. Lumenwerx will repair or replace defective luminaires or components at our discretion, provided they have been installed and operated in accordance with our specifications. Other limitations apply, please refer to the full warranty on our website.